

# Fees and charges

We provide a range of retail and network services for customers and contractors.

| Billing   |                |
|---|----------------|
| Paper bill fee  | \$1.20         |
| Over the counter payment (Australia Post)                           | \$2.54         |
| Account establishment   | \$24.00        |
| Dishonour fee (via Australia Post)                                  | \$27.50        |
| Dishonour fee (via direct debit)                                    | \$2.50         |
| Overdue account notice  | \$5.80*        |
| Credit card transaction fee   | 0.71%          |
| Copy of customer invoice request                                    | \$3.30         |
| Customer-funded work  |                |
| Permanent power supply (single phase or three phase meter)          | \$914.00       |
| Temporary supply connection (single phase or three phase meter)     | \$915.00       |
| Disconnection / reconnection of power supplies:                     |                |
| • prior to demolition   | \$611.20       |
| • for meter abolishment   |                |
| • following unauthorised reconnection                               |                |
| Connection to the network   | Quote required |
| Relocate a Horizon Power asset                                      | Quote required |
| Upgrade power supply to a current transformer meter (over 100 amps) | Quote required |
| Design Information Package  | \$1,215.00     |
| Design fee  | \$6,287.00     |
| Subsidised underground connection (up to 3 dwellings)               | \$4,973.50     |
| Application for unmetered supply                                    | Quote required |

| Metering   |                |
|--|----------------|
| Meter test - standard meter testing                        | \$247.20       |
| Meter test - concession rate                               | \$154.40       |
| Meter damage   | \$851.00       |
| Remote reconnection or disconnection                       | \$6.20         |
| Interval data request                                      | \$30.00        |
| Remote meter configuration                                 | \$26.30        |
| Manual meter read  | \$152.20       |
| Subsidiary electricity meter rental (daily charge)         | \$0.1660       |
| Reconciliation of embedded network master account          | Quote required |
| Embedded network management                                | \$312.10       |
| Adding or removing meters from an embedded network account | Quote required |
| Rebilling of an embedded network master meter account      | Quote required |
| Solar applications   |                |
| Feed in management   | \$14,000.00    |
| PV network impact statement (up to 1 MW)                   | \$3,706.00     |
| PV network impact statement (greater than 1 MW)            | \$10,587.00    |
| Miscellaneous charges                                      |                |
| Unnecessary callout charge (service vehicle visit)         | \$152.20       |
| High and wide load permit                                  | \$150.00       |
| Inspector fee (re-inspections)                             | \$481.60       |
| Freedom of Information application                         | \$30.00        |
| Vegetation removal   | Quote required |

\*GST not applicable

If you require more information or have any questions about which tariff applies to you, please contact us:

Residential **1800 267 926**  
 Email **enquiries@horizonpower-reply.com.au**  
 Web **www.horizonpower.com.au**

If you don't speak English we can arrange an interpreter service.

If you have hearing or speech difficulties please call **1800 461 499** (TTY).

For faults or emergencies, please call **13 23 51**.

Find us on     

Download our app  

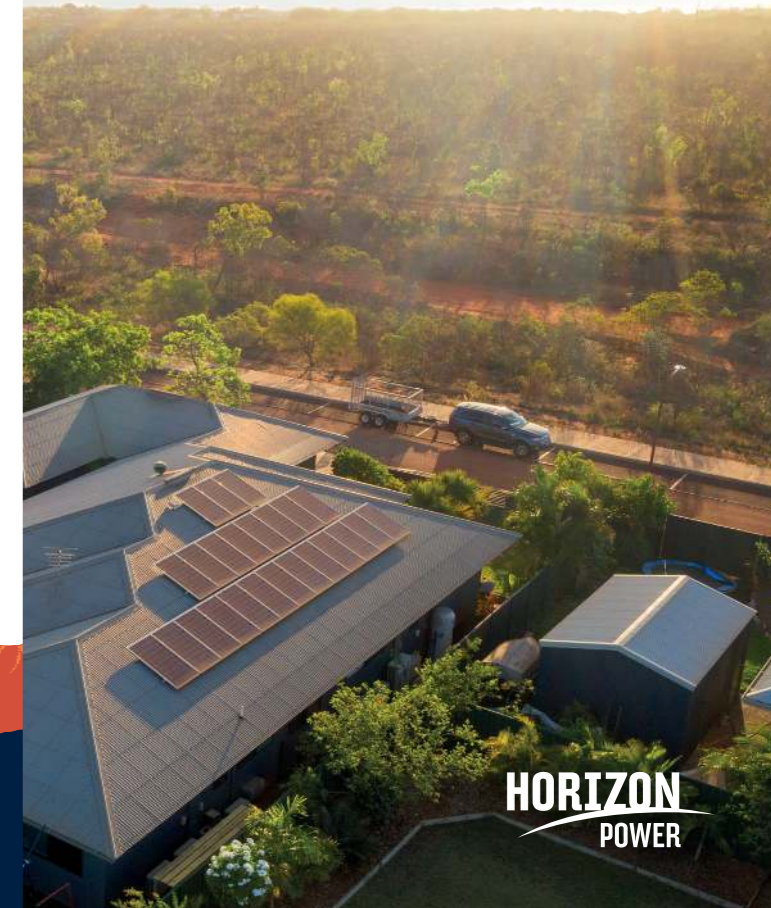


Printed on 99% recycled paper, improving our shared environment

# Electricity fees and charges

North West Interconnected System and Regional Non-Interconnected Systems

Effective as of 1 July 2021



**HORIZON**  
POWER

*This brochure is available in alternative formats on request.*

**HORIZON**  
POWER

**Horizon Power delivers energy solutions to regional and remote Western Australia. We're focused on ensuring reliable electricity is provided to our customers in the most efficient way to reduce costs.**

Most of our customers pay a tariff that is much lower than the actual cost of purchasing or generating, distributing and retailing electricity. The difference between the tariffs customers pay and the actual cost is subsidised by the WA State Government.

Current tariffs, fees and charges, and information on additional products, rebates and subsidies are available on our website [horizonpower.com.au/pricing](http://horizonpower.com.au/pricing)

# Tariffs

## A2 Residential Tariff

The A2 tariff is the standard residential tariff applied to private dwellings (houses, home units, flats, apartments) used solely for residential purposes. It offers customers the same flat rate energy charge regardless of where they live and which time of the day electricity is used.

|                         |                       |
|-------------------------|-----------------------|
| Supply charge           | \$1.0514 per day      |
| Electricity unit charge | 29.3273 cents per day |

## K2 Combined Use Tariff

The K2 tariff is for premises used for a combination of residential and business purposes, who consume less than 160 megawatt hours per annum.

|                    |                   |
|--------------------|-------------------|
| Supply charge      | \$1.8553 per day  |
| 0 - 20 kWh/day     | 30.6376 cents/kWh |
| 20 - 1,650 kWh/day | 28.8719 cents/kWh |
| > 1,650 kWh/day    | 32.5520 cents/kWh |

## Rebates and subsidies

Horizon Power provides a number of rebates and subsidies, on behalf of the State Government, to residential customers who hold a concession card.

We are here to help. To find out more about the rebates and schemes available, or to download our financial hardship brochure, visit our website or call our customer service centre on **1800 267 926**.

## L2 Small Business Tariff

The L2 tariff is applied to customers where electricity is used for business purposes, with consumption up to 50 megawatt hours per annum (up to 137 units per day on average).

|                   |                   |
|-------------------|-------------------|
| Supply charge     | \$1.8770 per day  |
| 0 - 1,650 kWh/day | 29.2089 cents/kWh |
| > 1,650 kWh/day   | 32.9320 cents/kWh |

## L4 Medium/Large Business Tariff

The L4 tariff is applied to customers where the electricity is used for business purposes, with consumption of 50 megawatt hours or more per annum (greater than 137 units per day on average), and for customers who use electricity partly for residential and partly for business purposes, who consume more than 160 megawatt hours per annum.

New commercial customers should contact their local Horizon Power office to discuss their electricity needs and pricing.

|                   |                   |
|-------------------|-------------------|
| Supply charge     | \$1.9066 per day  |
| 0 - 1,650 kWh/day | 38.7263 cents/kWh |
| > 1,650 kWh/day   | 32.8605 cents/kWh |

*Electricity is charged by the unit. A unit is one Kilowatt hour (kWh). All prices are correct as at 1 July 2021, include GST (except where noted otherwise), and are subject to change at any time.*

## Customers with specific needs

### C2 Community Service Tariff

The C2 tariff is available to small voluntary and charitable organisations. An application form detailing conditions, which must be met for this tariff, is available on our website at [horizonpower.com.au/pricing](http://horizonpower.com.au/pricing)

|                    |                   |
|--------------------|-------------------|
| Supply charge      | \$1.0145 per day  |
| 0 - 20 kWh/day     | 23.7035 cents/kWh |
| 20 - 1,650 kWh/day | 25.2900 cents/kWh |
| > 1,650 kWh/day    | 24.1230 cents/kWh |

### D2 Charitable Accommodation Tariff

The D2 tariff is applied to charitable or benevolent organisations providing residential accommodation.

|                 |                   |
|-----------------|-------------------|
| Supply charge   | \$1.007 per day   |
| Variable charge | 25.4249 cents/kWh |

## Government customers

Details on the pricing structure applied to State, Federal and Foreign Government customers – N2 (Regional Non-Interconnected Systems) and P2 (North West Interconnected System) – are available on our website.

|   |  |
|---|--|
| Government customers                    | Visit <a href="http://horizonpower.com.au/pricing">horizonpower.com.au/pricing</a> for prices effective 1 July 2021. |
| MyPower customers                       |  |
| Unmetered supplies and Streetlights (z) |  |