

Victorian Energy Fact Sheet

When you're signing up to something new, it's important to know what's what. Here's some essential info about Powershop and this offer.



ELECTRICITY

OFFER **POWERSHOPLITE**

DISTRIBUTOR **UNITED ENERGY**

About Powershop

We sell energy to homes and businesses in Victoria, NSW, South East QLD and South Australia. We work hard to provide better prices, a fairer deal for all our customers, and a better future for the planet.



Get energy insights and stay in control of your energy use

OVER 200,000
app downloads



Get the best service from our award winning Customer Team

93% average
customer
satisfaction rating

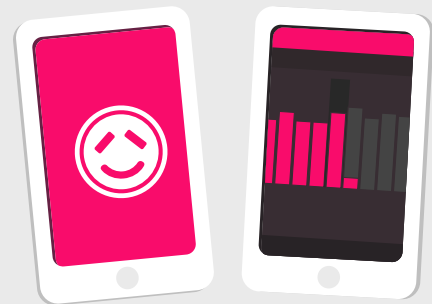


Get 100% carbon offset energy at no extra cost to you

OVER 1.8 Million
tonnes of carbon offset
thanks to Powershop customers

About this offer

This is a simple set and forget offer with no discounts, just a great rate. You get access to the Powershop app to manage your bills and energy usage.



Need Help?

Visit our help centre:
powershop.com.au/help

Call us on:
1800 462 668

The following pages have been created by the Victorian Energy Compare Government website.

Get in touch if you're not sure how to read the info on the following pages. We can help you understand which rates, tariff and climate zone applies to you.

You can also visit
powershop.com.au/vic-energy-fact-sheets

Victorian Energy Fact Sheet

| TARIFF | CHARGE | UNIT | INC. GST |
|--------------------------------|-------------------------|----------|----------|
| Medium Single Rate with Demand | Anytime | c/kWh | 24.99 |
| | Daily Supply Charge | c/day | 114.97 |
| | Summer Demand | c/kW/day | 59.97 |
| | Non Summer Demand | c/kW/day | 39.96 |
| LVkWTOU - 5 Day 7 to 7 | Peak | c/kWh | 31.68 |
| | Off Peak | c/kWh | 22.92 |
| | Daily Supply Charge | c/day | 114.97 |
| | Summer Demand Incentive | c/kW/day | 7.33 |
| 5 Day TOU with Summer Demand | Peak | c/kWh | 31.68 |
| | Off Peak | c/kWh | 22.92 |
| | Daily Supply Charge | c/day | 114.97 |
| | Summer Demand Incentive | c/kW/day | 61.35 |

VARIATION OF TARIFFS

If we vary our tariffs and charges for the sale of energy to you under this contract, we'll give you notice as soon as reasonably practicable. This will usually be by email, and by no later than the date of your next bill to be impacted by the variation.

OTHER FEES

In addition to the applicable prices, you may incur other fees, including disconnection fees. Information regarding fees is set out on our fees page powershop.com.au/fees.

CONTRACT INFORMATION

This Powershop offer has no exit fees or contract term, so you're free to leave whenever you want (although we hope you won't).



Powershop Australia Pty Ltd

- No contract term
- Single rate

- Call 1800 462 668
- www.powershop.com.au

Estimated Electricity costs

We are unable to provide an estimate for this offer.

Please contact **Powershop Australia Pty Ltd** on **1800 462 668** for pricing details.



Features

- Direct debit payment required
- No pay on time discount
- Green power
- Fixed price contract
- No paper bills available

Estimated costs are based on typical usage in your postcode, with regular usage on weekday afternoons and evenings. Your household's usage may vary. Costs exclude controlled load charges, solar payments, concessions and bonuses.

A more personalised estimate can be found on the Victorian Energy Compare website at <https://compare.energy.vic.gov.au>.

Retailers must provide clear advice to help customers find the offer that best suits their circumstances.

Contact the retailer by calling **1800 462 668** and quote this Offer ID **POD205233MS**.

Offer details

| | |
|----------------------|----------------------|
| Distributor | United Energy |
| Offer type | Market offer |
| Fuel type | Electricity |
| Customer type | Small business |
| Release date | 01-10-2020 |
| Expiry date | Contact the retailer |

Offer eligibility

Eligibility criteria may apply, contact Powershop for details.

Contract details

| | |
|----------------------------------|--|
| Contract term | No contract term |
| Cooling off period | 10 business days |
| Eligibility criteria | Eligibility criteria may apply, contact Powershop for details. |
| Prices are fixed | |
| Contract expiry details | This Powershop offer is an ongoing contract (until you or we end it) with no exit fees. Your daily supply and usage charges are secured until 31 December 2021. Your usage and supply charges may vary if your network tariff is changed |
| Full terms and conditions | Other fees and charges (incl. solar feed-in and GreenPower) may vary and are not secured. We'll let you know what your options are at the end of the fixed priced period in accordance with the regulatory requirements. We do not issue paper bills and require a credit card or bank details. For more information in relation to Powershop and this offer, see full terms and conditions at: www.powershop.com.au/terms-and-conditions |
| ESC licence information | Electricity and gas retail licence under Powershop Australia Pty Ltd |

Fees

(incl. GST)

| | |
|--|---------------------------|
| Early termination fee | Flat rate: \$0.00 |
| This Powershop offer has no exit fees | |
| Credit card payment processing fee | Flat rate: \$0.00 |
| Powershop do not charge credit card fees | |
| Disconnection fee | Flat rate: \$54.52 |
| Disconnection fees may apply to manually de-energise a property. The fee will be passed on from your distributor and may vary. | |
| Disconnection fee | Flat rate: \$12.28 |
| Disconnection fees may apply to remotely de-energise a property. The fee will be passed on from your distributor and may vary. | |
| Additional information | |
| In addition to the applicable prices, you may incur other fees, including disconnection fees. Information regarding fees is set out on our fees page powershop.com.au/fees | |

Billing details

| | |
|------------------------|--------------|
| Bill frequency | 1 month |
| Payment options | Direct debit |

Offer rate and details

Local time

| Electricity charges (All year) | Tariff (incl. GST) |
|--------------------------------|--------------------|
| Daily supply charge | 145.32 c/day |
| Peak consumption | |
| All consumption | 31.42c/kWh |

Daily supply charge: a charge that applies for supplying electricity to your premises for each day of the billing period, regardless of how much electricity is used.

kWh: a 'kWh' stands for kilowatt hour and is the unit of measurement for your electricity bill.

Solar feed-in tariff options

| | Tariff |
|--|-------------|
| Current retailer feed-in tariff | 10.20 c/kWh |
| Premium feed-in tariff | 70.20 c/kWh |

GreenPower options

When you choose to buy a GreenPower product from an energy retailer, the retailer then invests the additional charge in the renewable energy industry. These purchases are audited by a group of government agencies.

| Option | Description | Price (incl. GST) |
|------------------------|--|--------------------|
| 10% GreenPower | Your GreenPower preference can be set within your online account and changed at any time. No discount apply to GreenPower charges. | 0.37 cents per kWh |
| 100% GreenPower | Your GreenPower preference can be set within your online account and changed at any time. No discount apply to GreenPower charges. | 3.74 cents per kWh |
| 25% GreenPower | Your GreenPower preference can be set within your online account and changed at any time. No discount apply to GreenPower charges. | 0.94 cents per kWh |

| Option | Description | Price (incl. GST) |
|-----------------------|--|--------------------|
| 50% GreenPower | Your GreenPower preference can be set within your online account and changed at any time. No discount apply to GreenPower charges. | 1.87 cents per kWh |



Powershop Australia Pty Ltd

- No contract term
- Two rate: single rate with controlled load

- Call 1800 462 668
- www.powershop.com.au

Estimated Electricity costs

We are unable to provide an estimate for this offer.

Please contact **Powershop Australia Pty Ltd** on **1800 462 668** for pricing details.



Features

- Direct debit payment required
- No pay on time discount
- Green power
- Fixed price contract
- No paper bills available

Estimated costs are based on typical usage in your postcode, with regular usage on weekday afternoons and evenings. Your household's usage may vary. Costs exclude controlled load charges, solar payments, concessions and bonuses.

A more personalised estimate can be found on the Victorian Energy Compare website at <https://compare.energy.vic.gov.au>.

Retailers must provide clear advice to help customers find the offer that best suits their circumstances.

Contact the retailer by calling **1800 462 668** and quote this Offer ID **POD205232MS**.

Offer details

| | |
|----------------------|----------------------|
| Distributor | United Energy |
| Offer type | Market offer |
| Fuel type | Electricity |
| Customer type | Small business |
| Release date | 01-10-2020 |
| Expiry date | Contact the retailer |

Offer eligibility

Eligibility criteria may apply, contact Powershop for details.

Contract details

| | |
|----------------------------------|--|
| Contract term | No contract term |
| Cooling off period | 10 business days |
| Eligibility criteria | Eligibility criteria may apply, contact Powershop for details. |
| Prices are fixed | |
| Contract expiry details | This Powershop offer is an ongoing contract (until you or we end it) with no exit fees. Your daily supply and usage charges are secured until 31 December 2021. Your usage and supply charges may vary if your network tariff is changed |
| Full terms and conditions | Other fees and charges (incl. solar feed-in and GreenPower) may vary and are not secured. We'll let you know what your options are at the end of the fixed priced period in accordance with the regulatory requirements. We do not issue paper bills and require a credit card or bank details. For more information in relation to Powershop and this offer, see full terms and conditions at: www.powershop.com.au/terms-and-conditions |
| ESC licence information | Electricity and gas retail licence under Powershop Australia Pty Ltd |

Fees

(incl. GST)

| | |
|--|---------------------------|
| Early termination fee | Flat rate: \$0.00 |
| This Powershop offer has no exit fees | |
| Credit card payment processing fee | Flat rate: \$0.00 |
| Powershop do not charge credit card fees | |
| Disconnection fee | Flat rate: \$54.52 |
| Disconnection fees may apply to manually de-energise a property. The fee will be passed on from your distributor and may vary. | |
| Disconnection fee | Flat rate: \$12.28 |
| Disconnection fees may apply to remotely de-energise a property. The fee will be passed on from your distributor and may vary. | |
| Additional information | |
| In addition to the applicable prices, you may incur other fees, including disconnection fees. Information regarding fees is set out on our fees page powershop.com.au/fees | |

Billing details

| | |
|------------------------|--------------|
| Bill frequency | 1 month |
| Payment options | Direct debit |

Offer rate and details

Local time

| Electricity charges (All year) | Tariff (incl. GST) |
|---------------------------------------|---------------------------|
| Daily supply charge | 145.32 c/day |
| Peak consumption | |
| All consumption | 31.42c/kWh |
| Controlled load charges | Tariff (incl. GST) |
| Controlled load consumption | 19.47 c/kWh |

Daily supply charge: a charge that applies for supplying electricity to your premises for each day of the billing period, regardless of how much electricity is used.

kWh: a 'kWh' stands for kilowatt hour and is the unit of measurement for your electricity bill.

Solar feed-in tariff options

| | Tariff |
|--|---------------|
| Current retailer feed-in tariff | 10.20 c/kWh |
| Premium feed-in tariff | 70.20 c/kWh |

GreenPower options

When you choose to buy a GreenPower product from an energy retailer, the retailer then invests the additional charge in the renewable energy industry. These purchases are audited by a group of government agencies.

| Option | Description | Price (incl. GST) |
|------------------------|--|--------------------------|
| 10% GreenPower | Your GreenPower preference can be set within your online account and changed at any time. No discount apply to GreenPower charges. | 0.37 cents per kWh |
| 100% GreenPower | Your GreenPower preference can be set within your online account and changed at any time. No discount apply to GreenPower charges. | 3.74 cents per kWh |

| Option | Description | Price (incl. GST) |
|-----------------------|--|--------------------------|
| 25% GreenPower | Your GreenPower preference can be set within your online account and changed at any time. No discount apply to GreenPower charges. | 0.94 cents per kWh |
| 50% GreenPower | Your GreenPower preference can be set within your online account and changed at any time. No discount apply to GreenPower charges. | 1.87 cents per kWh |



Powershop Australia Pty Ltd

- No contract term
- Single rate

- Call 1800 462 668
- www.powershop.com.au

Estimated Electricity costs

We are unable to provide an estimate for this offer.

Please contact **Powershop Australia Pty Ltd** on **1800 462 668** for pricing details.



Features

- Direct debit payment required
- No pay on time discount
- Green power
- Fixed price contract
- No paper bills available

Estimated costs are based on typical usage in your postcode, with regular usage on weekday afternoons and evenings. Your household's usage may vary. Costs exclude controlled load charges, solar payments, concessions and bonuses.

A more personalised estimate can be found on the Victorian Energy Compare website at <https://compare.energy.vic.gov.au>.

Retailers must provide clear advice to help customers find the offer that best suits their circumstances.

Contact the retailer by calling **1800 462 668** and quote this Offer ID **POD205234MS**.

Offer details

| | |
|----------------------|----------------------|
| Distributor | United Energy |
| Offer type | Market offer |
| Fuel type | Electricity |
| Customer type | Small business |
| Release date | 01-10-2020 |
| Expiry date | Contact the retailer |

Offer eligibility

Eligibility criteria may apply, contact Powershop for details.

Contract details

| | |
|-----------------------------|--|
| Contract term | No contract term |
| Cooling off period | 10 business days |
| Eligibility criteria | Eligibility criteria may apply, contact Powershop for details. |

Prices are fixed

| | |
|----------------------------------|--|
| Contract expiry details | This Powershop offer is an ongoing contract (until you or we end it) with no exit fees. Your daily supply and usage charges are secured until 31 December 2021. Your usage and supply charges may vary if your network tariff is changed |
| Full terms and conditions | Other fees and charges (incl. solar feed-in and GreenPower) may vary and are not secured. We'll let you know what your options are at the end of the fixed priced period in accordance with the regulatory requirements. We do not issue paper bills and require a credit card or bank details. For more information in relation to Powershop and this offer, see full terms and conditions at: www.powershop.com.au/terms-and-conditions |
| ESC licence information | Electricity and gas retail licence under Powershop Australia Pty Ltd |

Fees

(incl. GST)

| | |
|---|---------------------------|
| Early termination fee | Flat rate: \$0.00 |
| This Powershop offer has no exit fees | |
| Credit card payment processing fee | Flat rate: \$0.00 |
| Powershop do not charge credit card fees. | |
| Disconnection fee | Flat rate: \$54.52 |
| Disconnection fees may apply to manually de-energise a property. The fee will be passed on from your distributor and may vary. | |
| Disconnection fee | Flat rate: \$12.28 |
| Disconnection fees may apply to remotely de-energise a property. The fee will be passed on from your distributor and may vary. | |
| Additional information | |
| In addition to the applicable prices, you may incur other fees, including disconnection fees. Information regarding fees is set out on our fees page powershop.com.au/fees | |

Billing details

| | |
|------------------------|--------------|
| Bill frequency | 1 month |
| Payment options | Direct debit |

Offer rate and details

Local time

Season 1 electricity charges - Non-Summer (01-Jul - 30-Nov) Tariff (incl. GST)

| | |
|----------------------------|--------------|
| Daily supply charge | 114.97 c/day |
|----------------------------|--------------|

Peak consumption

| | |
|-----------------|------------|
| All consumption | 24.99c/kWh |
|-----------------|------------|

| | |
|--|----------------------------|
| Demand charge – Mon - Fri, 10am - 6pm | 39.96 cents per kW per Day |
|--|----------------------------|

Non-Summer Demand Charge

Demand calculation is based on the maximum measured interval consumption occurring between 10am - 6pm Mon - Fri.

Applies per Month on the maximum kW demand for all usage. Minimum charges based on demand of 1.5 kW.

Season 2 electricity charges - Summer (01-Dec - 31-Mar) Tariff (incl. GST)

| | |
|----------------------------|--------------|
| Daily supply charge | 114.97 c/day |
|----------------------------|--------------|

Peak consumption

| | |
|-----------------|------------|
| All consumption | 24.99c/kWh |
|-----------------|------------|

| | |
|--|----------------------------|
| Demand charge – Mon - Fri, 10am - 6pm | 59.97 cents per kW per Day |
|--|----------------------------|

Summer Demand Charge

Demand calculation is based on the maximum measured interval consumption occurring between 10am - 6pm Mon - Fri.

Applies per Month on the maximum kW demand for all usage. Minimum charges based on demand of 1.5 kW.

Season 3 electricity charges - Non-Summer (01-Apr - 30-Jun) Tariff (incl. GST)

| | |
|----------------------------|--------------|
| Daily supply charge | 114.97 c/day |
|----------------------------|--------------|

Peak consumption

| | |
|-----------------|------------|
| All consumption | 24.99c/kWh |
|-----------------|------------|

| | |
|--|----------------------------|
| Demand charge – Mon - Fri, 10am - 6pm | 39.96 cents per kW per Day |
|--|----------------------------|

Non-Summer Demand Charge

Demand calculation is based on the maximum measured interval consumption occurring between 10am - 6pm Mon - Fri.

Applies per Month on the maximum kW demand for all usage. Minimum charges based on demand of 1.5 kW.

Daily supply charge: a charge that applies for supplying electricity to your premises for each day of the billing period, regardless of how much electricity is used.

kWh: a 'kWh' stands for kilowatt hour and is the unit of measurement for your electricity bill.

Solar feed-in tariff options

| | Tariff |
|--|---------------|
| Current retailer feed-in tariff | 10.20 c/kWh |
| Premium feed-in tariff | 70.20 c/kWh |

GreenPower options

When you choose to buy a GreenPower product from an energy retailer, the retailer then invests the additional charge in the renewable energy industry. These purchases are audited by a group of government agencies.

| Option | Description | Price (incl. GST) |
|------------------------|--|--------------------------|
| 10% GreenPower | Your GreenPower preference can be set within your online account and changed at any time. No discount apply to GreenPower charges. | 0.37 cents per kWh |
| 100% GreenPower | Your GreenPower preference can be set within your online account and changed at any time. No discount apply to GreenPower charges. | 3.74 cents per kWh |
| 25% GreenPower | Your GreenPower preference can be set within your online account and changed at any time. No discount apply to GreenPower charges. | 0.94 cents per kWh |
| 50% GreenPower | Your GreenPower preference can be set within your online account and changed at any time. No discount apply to GreenPower charges. | 1.87 cents per kWh |



Powershop Australia Pty Ltd

- No contract term
- Time of use

- Call 1800 462 668
- www.powershop.com.au

Estimated Electricity costs

We are unable to provide an estimate for this offer.

Please contact **Powershop Australia Pty Ltd** on **1800 462 668** for pricing details.



Features

- Direct debit payment required
- No pay on time discount
- Green power
- Fixed price contract
- No paper bills available

Estimated costs are based on typical usage in your postcode, with regular usage on weekday afternoons and evenings. Your household's usage may vary. Costs exclude controlled load charges, solar payments, concessions and bonuses.

A more personalised estimate can be found on the Victorian Energy Compare website at <https://compare.energy.vic.gov.au>.

Retailers must provide clear advice to help customers find the offer that best suits their circumstances.

Contact the retailer by calling **1800 462 668** and quote this Offer ID **POD205251MS**.

Offer details

| | |
|----------------------|----------------------|
| Distributor | United Energy |
| Offer type | Market offer |
| Fuel type | Electricity |
| Customer type | Small business |
| Release date | 01-10-2020 |
| Expiry date | Contact the retailer |

Offer eligibility

Eligibility criteria may apply, contact Powershop for details.

Contract details

| | |
|-----------------------------|--|
| Contract term | No contract term |
| Cooling off period | 10 business days |
| Eligibility criteria | Eligibility criteria may apply, contact Powershop for details. |

Prices are fixed

Contract expiry details This Powershop offer is an ongoing contract (until you or we end it) with no exit fees. Your daily supply and usage charges are secured until 31 December 2021. Your usage and supply charges may vary if your network tariff is changed

Full terms and conditions

Other fees and charges (incl. solar feed-in and GreenPower) may vary and are not secured. We'll let you know what your options are at the end of the fixed priced period in accordance with the regulatory requirements. We do not issue paper bills and require a credit card or bank details. For more information in relation to Powershop and this offer, see full terms and conditions at: www.powershop.com.au/terms-and-conditions

ESC licence information

Electricity and gas retail licence under Powershop Australia Pty Ltd

Fees

(incl. GST)

| | |
|---|---------------------------|
| Early termination fee | Flat rate: \$0.00 |
| This Powershop offer has no exit fees | |
| Credit card payment processing fee | Flat rate: \$0.00 |
| Powershop do not charge credit card fees | |
| Disconnection fee | Flat rate: \$54.52 |
| Disconnection fees may apply to manually de-energise a property. The fee will be passed on from your distributor and may vary. | |
| Disconnection fee | Flat rate: \$12.28 |
| Disconnection fees may apply to remotely de-energise a property. The fee will be passed on from your distributor and may vary. | |
| Additional information | |
| In addition to the applicable prices, you may incur other fees, including disconnection fees. Information regarding fees is set out on our fees page powershop.com.au/fees | |

Billing details

| | |
|------------------------|--------------|
| Bill frequency | 1 month |
| Payment options | Direct debit |

Offer rate and details

Local time

| Electricity charges (All year) | Tariff (incl. GST) |
|---|--------------------|
| Daily supply charge | 155.50 c/day |
| Peak consumption – Mon - Fri, 7am - 11pm | |
| All consumption | 33.55c/kWh |
| Off-peak consumption – Mon - Fri, 11pm - 12am; Mon - Fri, 12am - 7am; Sat - Sun, all day | |
| All consumption | 22.20c/kWh |

Daily supply charge: a charge that applies for supplying electricity to your premises for each day of the billing period, regardless of how much electricity is used.

kWh: a 'kWh' stands for kilowatt hour and is the unit of measurement for your electricity bill.

Solar feed-in tariff options

| | Tariff |
|--|-------------|
| Current retailer feed-in tariff | 10.20 c/kWh |
| Premium feed-in tariff | 70.20 c/kWh |

GreenPower options

When you choose to buy a GreenPower product from an energy retailer, the retailer then invests the additional charge in the renewable energy industry. These purchases are audited by a group of government agencies.

| Option | Description | Price (incl. GST) |
|------------------------|--|--------------------|
| 10% GreenPower | Your GreenPower preference can be set within your online account and changed at any time. No discount apply to GreenPower charges. | 0.37 cents per kWh |
| 100% GreenPower | Your GreenPower preference can be set within your online account and changed at any time. No discount apply to GreenPower charges. | 3.74 cents per kWh |
| 25% GreenPower | Your GreenPower preference can be set within your online account and changed at any time. No discount apply to GreenPower charges. | 0.94 cents per kWh |

| Option | Description | Price (incl. GST) |
|-----------------------|--|--------------------|
| 50% GreenPower | Your GreenPower preference can be set within your online account and changed at any time. No discount apply to GreenPower charges. | 1.87 cents per kWh |



Powershop Australia Pty Ltd

- No contract term
- Time of use with controlled load

- Call 1800 462 668
- www.powershop.com.au

Estimated Electricity costs

We are unable to provide an estimate for this offer.

Please contact **Powershop Australia Pty Ltd** on **1800 462 668** for pricing details.



Features

- Direct debit payment required
- No pay on time discount
- Green power
- Fixed price contract
- No paper bills available

Estimated costs are based on typical usage in your postcode, with regular usage on weekday afternoons and evenings. Your household's usage may vary. Costs exclude controlled load charges, solar payments, concessions and bonuses.

A more personalised estimate can be found on the Victorian Energy Compare website at <https://compare.energy.vic.gov.au>.

Retailers must provide clear advice to help customers find the offer that best suits their circumstances.

Contact the retailer by calling **1800 462 668** and quote this Offer ID **POD205255MS**.

Offer details

| | |
|----------------------|----------------------|
| Distributor | United Energy |
| Offer type | Market offer |
| Fuel type | Electricity |
| Customer type | Small business |
| Release date | 01-10-2020 |
| Expiry date | Contact the retailer |

Offer eligibility

Eligibility criteria may apply, contact Powershop for details.

Contract details

| | |
|-----------------------------|--|
| Contract term | No contract term |
| Cooling off period | 10 business days |
| Eligibility criteria | Eligibility criteria may apply, contact Powershop for details. |

Prices are fixed

Contract expiry details This Powershop offer is an ongoing contract (until you or we end it) with no exit fees. Your daily supply and usage charges are secured until 31 December 2021. Your usage and supply charges may vary if your network tariff is changed

Full terms and conditions

Other fees and charges (incl. solar feed-in and GreenPower) may vary and are not secured. We'll let you know what your options are at the end of the fixed priced period in accordance with the regulatory requirements. We do not issue paper bills and require a credit card or bank details. For more information in relation to Powershop and this offer, see full terms and conditions at: www.powershop.com.au/terms-and-conditions

ESC licence information

Electricity and gas retail licence under Powershop Australia Pty Ltd

Fees

(incl. GST)

| | |
|---|---------------------------|
| Early termination fee | Flat rate: \$0.00 |
| This Powershop offer has no exit fees | |
| Credit card payment processing fee | Flat rate: \$0.00 |
| Powershop do not charge credit card fees. | |
| Disconnection fee | Flat rate: \$54.52 |
| Disconnection fees may apply to manually de-energise a property. The fee will be passed on from your distributor and may vary. | |
| Disconnection fee | Flat rate: \$12.28 |
| Disconnection fees may apply to remotely de-energise a property. The fee will be passed on from your distributor and may vary. | |
| Additional information | |
| In addition to the applicable prices, you may incur other fees, including disconnection fees. Information regarding fees is set out on our fees page powershop.com.au/fees . | |

Billing details

| | |
|------------------------|--------------|
| Bill frequency | 1 month |
| Payment options | Direct debit |

Offer rate and details

Local time

| Electricity charges (All year) | Tariff (incl. GST) |
|---|--------------------|
| Daily supply charge | 155.50 c/day |
| Peak consumption – Mon - Fri, 7am - 11pm | |
| All consumption | 33.55c/kWh |
| Off-peak consumption – Mon - Fri, 11pm - 12am; Mon - Fri, 12am - 7am; Sat - Sun, all day | |
| All consumption | 22.20c/kWh |
| Controlled load charges | Tariff (incl. GST) |
| Controlled load consumption | 19.47 c/kWh |

Daily supply charge: a charge that applies for supplying electricity to your premises for each day of the billing period, regardless of how much electricity is used.

kWh: a 'kWh' stands for kilowatt hour and is the unit of measurement for your electricity bill.

Solar feed-in tariff options

| | Tariff |
|--|-------------|
| Current retailer feed-in tariff | 10.20 c/kWh |
| Premium feed-in tariff | 70.20 c/kWh |

GreenPower options

When you choose to buy a GreenPower product from an energy retailer, the retailer then invests the additional charge in the renewable energy industry. These purchases are audited by a group of government agencies.

| Option | Description | Price (incl. GST) |
|-----------------------|--|--------------------|
| 10% GreenPower | Your GreenPower preference can be set within your online account and changed at any time. No discount apply to GreenPower charges. | 0.37 cents per kWh |

| Option | Description | Price (incl. GST) |
|------------------------|--|--------------------------|
| 100% GreenPower | Your GreenPower preference can be set within your online account and changed at any time. No discount apply to GreenPower charges. | 3.74 cents per kWh |
| 25% GreenPower | Your GreenPower preference can be set within your online account and changed at any time. No discount apply to GreenPower charges. | 0.94 cents per kWh |
| 50% GreenPower | Your GreenPower preference can be set within your online account and changed at any time. No discount apply to GreenPower charges. | 1.87 cents per kWh |



Powershop Australia Pty Ltd

- No contract term
- Time of use

- Call 1800 462 668
- www.powershop.com.au

Estimated Electricity costs

We are unable to provide an estimate for this offer.

Please contact **Powershop Australia Pty Ltd** on **1800 462 668** for pricing details.



Features

- Direct debit payment required
- No pay on time discount
- Green power
- Fixed price contract
- No paper bills available

Estimated costs are based on typical usage in your postcode, with regular usage on weekday afternoons and evenings. Your household's usage may vary. Costs exclude controlled load charges, solar payments, concessions and bonuses.

A more personalised estimate can be found on the Victorian Energy Compare website at <https://compare.energy.vic.gov.au>.

Retailers must provide clear advice to help customers find the offer that best suits their circumstances.

Contact the retailer by calling **1800 462 668** and quote this Offer ID **POD205252MS**.

Offer details

| | |
|----------------------|----------------------|
| Distributor | United Energy |
| Offer type | Market offer |
| Fuel type | Electricity |
| Customer type | Small business |
| Release date | 01-10-2020 |
| Expiry date | Contact the retailer |

Offer eligibility

Eligibility criteria may apply, contact Powershop for details.

Contract details

| | |
|----------------------------------|--|
| Contract term | No contract term |
| Cooling off period | 10 business days |
| Eligibility criteria | Eligibility criteria may apply, contact Powershop for details. |
| Prices are fixed | |
| Contract expiry details | This Powershop offer is an ongoing contract (until you or we end it) with no exit fees. Your daily supply and usage charges are secured until 31 December 2021. Your usage and supply charges may vary if your network tariff is changed |
| Full terms and conditions | Other fees and charges (incl. solar feed-in and GreenPower) may vary and are not secured. We'll let you know what your options are at the end of the fixed priced period in accordance with the regulatory requirements. We do not issue paper bills and require a credit card or bank details. For more information in relation to Powershop and this offer, see full terms and conditions at: www.powershop.com.au/terms-and-conditions |
| ESC licence information | Electricity and gas retail licence under Powershop Australia Pty Ltd |

Fees

(incl. GST)

| | |
|---|---------------------------|
| Early termination fee | Flat rate: \$0.00 |
| This Powershop offer has no exit fees | |
| Credit card payment processing fee | Flat rate: \$0.00 |
| Powershop do not charge credit card fees | |
| Disconnection fee | Flat rate: \$54.52 |
| Disconnection fees may apply to manually de-energise a property. The fee will be passed on from your distributor and may vary. | |
| Disconnection fee | Flat rate: \$12.28 |
| Disconnection fees may apply to remotely de-energise a property. The fee will be passed on from your distributor and may vary. | |
| Additional information | |
| In addition to the applicable prices, you may incur other fees, including disconnection fees. Information regarding fees is set out on our fees page powershop.com.au/fees | |

Billing details

| | |
|------------------------|--------------|
| Bill frequency | 1 month |
| Payment options | Direct debit |

Offer rate and details

Local time

| Electricity charges (All year) | Tariff (incl. GST) |
|---|--------------------|
| Daily supply charge | 155.99 c/day |
| Peak consumption – Everyday, 7am - 11pm | |
| All consumption | 33.34c/kWh |
| Off-peak consumption – Everyday, 11pm - 12am; Everyday, 12am - 7am | |
| All consumption | 21.92c/kWh |

Daily supply charge: a charge that applies for supplying electricity to your premises for each day of the billing period, regardless of how much electricity is used.

kWh: a 'kWh' stands for kilowatt hour and is the unit of measurement for your electricity bill.

Solar feed-in tariff options

| | Tariff |
|--|-------------|
| Current retailer feed-in tariff | 10.20 c/kWh |
| Premium feed-in tariff | 70.20 c/kWh |

GreenPower options

When you choose to buy a GreenPower product from an energy retailer, the retailer then invests the additional charge in the renewable energy industry. These purchases are audited by a group of government agencies.

| Option | Description | Price (incl. GST) |
|------------------------|--|--------------------|
| 10% GreenPower | Your GreenPower preference can be set within your online account and changed at any time. No discount apply to GreenPower charges. | 0.37 cents per kWh |
| 100% GreenPower | Your GreenPower preference can be set within your online account and changed at any time. No discount apply to GreenPower charges. | 3.74 cents per kWh |
| 25% GreenPower | Your GreenPower preference can be set within your online account and changed at any time. No discount apply to GreenPower charges. | 0.94 cents per kWh |

| Option | Description | Price (incl. GST) |
|-----------------------|--|--------------------|
| 50% GreenPower | Your GreenPower preference can be set within your online account and changed at any time. No discount apply to GreenPower charges. | 1.87 cents per kWh |



Powershop Australia Pty Ltd

- No contract term
- Time of use with controlled load

- Call 1800 462 668
- www.powershop.com.au

Estimated Electricity costs

We are unable to provide an estimate for this offer.

Please contact **Powershop Australia Pty Ltd** on **1800 462 668** for pricing details.



Features

- Direct debit payment required
- No pay on time discount
- Green power
- Fixed price contract
- No paper bills available

Estimated costs are based on typical usage in your postcode, with regular usage on weekday afternoons and evenings. Your household's usage may vary. Costs exclude controlled load charges, solar payments, concessions and bonuses.

A more personalised estimate can be found on the Victorian Energy Compare website at <https://compare.energy.vic.gov.au>.

Retailers must provide clear advice to help customers find the offer that best suits their circumstances.

Contact the retailer by calling **1800 462 668** and quote this Offer ID **POD205256MS**.

Offer details

| | |
|----------------------|----------------------|
| Distributor | United Energy |
| Offer type | Market offer |
| Fuel type | Electricity |
| Customer type | Small business |
| Release date | 01-10-2020 |
| Expiry date | Contact the retailer |

Offer eligibility

Eligibility criteria may apply, contact Powershop for details.

Contract details

| | |
|----------------------------------|--|
| Contract term | No contract term |
| Cooling off period | 10 business days |
| Eligibility criteria | Eligibility criteria may apply, contact Powershop for details. |
| Prices are fixed | |
| Contract expiry details | This Powershop offer is an ongoing contract (until you or we end it) with no exit fees. Your daily supply and usage charges are secured until 31 December 2021. Your usage and supply charges may vary if your network tariff is changed |
| Full terms and conditions | Other fees and charges (incl. solar feed-in and GreenPower) may vary and are not secured. We'll let you know what your options are at the end of the fixed priced period in accordance with the regulatory requirements. We do not issue paper bills and require a credit card or bank details. For more information in relation to Powershop and this offer, see full terms and conditions at: www.powershop.com.au/terms-and-conditions |
| ESC licence information | Electricity and gas retail licence under Powershop Australia Pty Ltd |

Fees

(incl. GST)

| | |
|---|---------------------------|
| Early termination fee | Flat rate: \$0.00 |
| This Powershop offer has no exit fees | |
| Credit card payment processing fee | Flat rate: \$0.00 |
| Powershop do not charge credit card fees. | |
| Disconnection fee | Flat rate: \$54.52 |
| Disconnection fees may apply to manually de-energise a property. The fee will be passed on from your distributor and may vary. | |
| Disconnection fee | Flat rate: \$12.28 |
| Disconnection fees may apply to remotely de-energise a property. The fee will be passed on from your distributor and may vary. | |
| Additional information | |
| In addition to the applicable prices, you may incur other fees, including disconnection fees. Information regarding fees is set out on our fees page powershop.com.au/fees . | |

Billing details

| | |
|------------------------|--------------|
| Bill frequency | 1 month |
| Payment options | Direct debit |

Offer rate and details

Local time

| Electricity charges (All year) | Tariff (incl. GST) |
|--|---------------------------|
| Daily supply charge | 155.99 c/day |
| Peak consumption – Everyday, 7am - 11pm All consumption | 33.34c/kWh |
| Off-peak consumption – Everyday, 11pm - 12am; Everyday, 12am - 7am All consumption | 21.92c/kWh |
| Controlled load charges | Tariff (incl. GST) |
| Controlled load consumption | 19.47 c/kWh |

Daily supply charge: a charge that applies for supplying electricity to your premises for each day of the billing period, regardless of how much electricity is used.

kWh: a 'kWh' stands for kilowatt hour and is the unit of measurement for your electricity bill.

Solar feed-in tariff options

| | Tariff |
|--|---------------|
| Current retailer feed-in tariff | 10.20 c/kWh |
| Premium feed-in tariff | 70.20 c/kWh |

GreenPower options

When you choose to buy a GreenPower product from an energy retailer, the retailer then invests the additional charge in the renewable energy industry. These purchases are audited by a group of government agencies.

| Option | Description | Price (incl. GST) |
|-----------------------|--|--------------------------|
| 10% GreenPower | Your GreenPower preference can be set within your online account and changed at any time. No discount apply to GreenPower charges. | 0.37 cents per kWh |

| Option | Description | Price (incl. GST) |
|------------------------|--|--------------------------|
| 100% GreenPower | Your GreenPower preference can be set within your online account and changed at any time. No discount apply to GreenPower charges. | 3.74 cents per kWh |
| 25% GreenPower | Your GreenPower preference can be set within your online account and changed at any time. No discount apply to GreenPower charges. | 0.94 cents per kWh |
| 50% GreenPower | Your GreenPower preference can be set within your online account and changed at any time. No discount apply to GreenPower charges. | 1.87 cents per kWh |



Powershop Australia Pty Ltd

- No contract term
- Time of use

- Call 1800 462 668
- www.powershop.com.au

Estimated Electricity costs

We are unable to provide an estimate for this offer.

Please contact **Powershop Australia Pty Ltd** on **1800 462 668** for pricing details.



Features

- Direct debit payment required
- No pay on time discount
- Green power
- Fixed price contract
- No paper bills available

Estimated costs are based on typical usage in your postcode, with regular usage on weekday afternoons and evenings. Your household's usage may vary. Costs exclude controlled load charges, solar payments, concessions and bonuses.

A more personalised estimate can be found on the Victorian Energy Compare website at <https://compare.energy.vic.gov.au>.

Retailers must provide clear advice to help customers find the offer that best suits their circumstances.

Contact the retailer by calling **1800 462 668** and quote this Offer ID **POD205253MS**.

Offer details

| | |
|----------------------|----------------------|
| Distributor | United Energy |
| Offer type | Market offer |
| Fuel type | Electricity |
| Customer type | Small business |
| Release date | 01-10-2020 |
| Expiry date | Contact the retailer |

Offer eligibility

Eligibility criteria may apply, contact Powershop for details.

Contract details

| | |
|----------------------------------|--|
| Contract term | No contract term |
| Cooling off period | 10 business days |
| Eligibility criteria | Eligibility criteria may apply, contact Powershop for details. |
| Prices are fixed | |
| Contract expiry details | This Powershop offer is an ongoing contract (until you or we end it) with no exit fees. Your daily supply and usage charges are secured until 31 December 2021. Your usage and supply charges may vary if your network tariff is changed |
| Full terms and conditions | Other fees and charges (incl. solar feed-in and GreenPower) may vary and are not secured. We'll let you know what your options are at the end of the fixed priced period in accordance with the regulatory requirements. We do not issue paper bills and require a credit card or bank details. For more information in relation to Powershop and this offer, see full terms and conditions at: www.powershop.com.au/terms-and-conditions |
| ESC licence information | Electricity and gas retail licence under Powershop Australia Pty Ltd |

Fees

(incl. GST)

| | |
|---|---------------------------|
| Early termination fee | Flat rate: \$0.00 |
| This Powershop offer has no exit fees | |
| Credit card payment processing fee | Flat rate: \$0.00 |
| Powershop do not charge credit card fees. | |
| Disconnection fee | Flat rate: \$54.52 |
| Disconnection fees may apply to manually de-energise a property. The fee will be passed on from your distributor and may vary. | |
| Disconnection fee | Flat rate: \$12.28 |
| Disconnection fees may apply to remotely de-energise a property. The fee will be passed on from your distributor and may vary. | |
| Additional information | |
| In addition to the applicable prices, you may incur other fees, including disconnection fees. Information regarding fees is set out on our fees page powershop.com.au/fees . | |

Billing details

| | |
|------------------------|--------------|
| Bill frequency | 1 month |
| Payment options | Direct debit |

Offer rate and details

Local time

Season 1 electricity charges - Non-Summer (01-Jul - 31-Oct) Tariff (incl. GST)

| | |
|----------------------------|--------------|
| Daily supply charge | 114.97 c/day |
|----------------------------|--------------|

Peak consumption – Mon - Fri, 7am - 11pm

| | |
|-----------------|------------|
| All consumption | 31.68c/kWh |
|-----------------|------------|

Off-peak consumption – Mon - Fri, 12am - 7am; Mon - Fri, 11pm - 12am; Sat - Sun, all day

| | |
|-----------------|------------|
| All consumption | 22.92c/kWh |
|-----------------|------------|

Season 2 electricity charges - Summer (01-Nov - 31-Mar) Tariff (incl. GST)

| | |
|----------------------------|--------------|
| Daily supply charge | 114.97 c/day |
|----------------------------|--------------|

Peak consumption – Mon - Fri, 7am - 11pm

| | |
|-----------------|------------|
| All consumption | 31.68c/kWh |
|-----------------|------------|

Off-peak consumption – Mon - Fri, 12am - 7am; Mon - Fri, 11pm - 12am; Sat - Sun, all day

| | |
|-----------------|------------|
| All consumption | 22.92c/kWh |
|-----------------|------------|

| | |
|---|----------------------------|
| Demand charge – Mon - Fri, 2pm - 7pm | 61.35 cents per kW per Day |
|---|----------------------------|

Summer Demand Incentive Charge

Demand calculation is based on the maximum measured interval consumption occurring between 2pm - 7pm Mon - Fri.

Applies per Month on the maximum kW demand for all usage.

Season 3 electricity charges - Non-Summer (01-Apr - 30-Jun) Tariff (incl. GST)

| | |
|----------------------------|--------------|
| Daily supply charge | 114.97 c/day |
|----------------------------|--------------|

Peak consumption – Mon - Fri, 7am - 11pm

| | |
|-----------------|------------|
| All consumption | 31.68c/kWh |
|-----------------|------------|

Off-peak consumption – Mon - Fri, 12am - 7am; Mon - Fri, 11pm - 12am; Sat - Sun, all day

| | |
|-----------------|------------|
| All consumption | 22.92c/kWh |
|-----------------|------------|

Daily supply charge: a charge that applies for supplying electricity to your premises for each day of the billing period, regardless of how much electricity is used.

kWh: a 'kWh' stands for kilowatt hour and is the unit of measurement for your electricity bill.

Solar feed-in tariff options

| | Tariff |
|--|---------------|
| Current retailer feed-in tariff | 10.20 c/kWh |
| Premium feed-in tariff | 70.20 c/kWh |

GreenPower options

When you choose to buy a GreenPower product from an energy retailer, the retailer then invests the additional charge in the renewable energy industry. These purchases are audited by a group of government agencies.

| Option | Description | Price (incl. GST) |
|------------------------|--|--------------------------|
| 10% GreenPower | Your GreenPower preference can be set within your online account and changed at any time. No discount apply to GreenPower charges. | 0.37 cents per kWh |
| 100% GreenPower | Your GreenPower preference can be set within your online account and changed at any time. No discount apply to GreenPower charges. | 3.74 cents per kWh |
| 25% GreenPower | Your GreenPower preference can be set within your online account and changed at any time. No discount apply to GreenPower charges. | 0.94 cents per kWh |
| 50% GreenPower | Your GreenPower preference can be set within your online account and changed at any time. No discount apply to GreenPower charges. | 1.87 cents per kWh |



Powershop Australia Pty Ltd

- No contract term
- Time of use with controlled load

- Call 1800 462 668
- www.powershop.com.au

Estimated Electricity costs

We are unable to provide an estimate for this offer.

Please contact **Powershop Australia Pty Ltd** on **1800 462 668** for pricing details.



Features

- Direct debit payment required
- No pay on time discount
- Green power
- Fixed price contract
- No paper bills available

Estimated costs are based on typical usage in your postcode, with regular usage on weekday afternoons and evenings. Your household's usage may vary. Costs exclude controlled load charges, solar payments, concessions and bonuses.

A more personalised estimate can be found on the Victorian Energy Compare website at <https://compare.energy.vic.gov.au>.

Retailers must provide clear advice to help customers find the offer that best suits their circumstances.

Contact the retailer by calling **1800 462 668** and quote this Offer ID **POD205257MS**.

Offer details

| | |
|----------------------|----------------------|
| Distributor | United Energy |
| Offer type | Market offer |
| Fuel type | Electricity |
| Customer type | Small business |
| Release date | 01-10-2020 |
| Expiry date | Contact the retailer |

Offer eligibility

Eligibility criteria may apply, contact Powershop for details.

Contract details

| | |
|----------------------------------|--|
| Contract term | No contract term |
| Cooling off period | 10 business days |
| Eligibility criteria | Eligibility criteria may apply, contact Powershop for details. |
| Prices are fixed | |
| Contract expiry details | This Powershop offer is an ongoing contract (until you or we end it) with no exit fees. Your daily supply and usage charges are secured until 31 December 2021. Your usage and supply charges may vary if your network tariff is changed |
| Full terms and conditions | Other fees and charges (incl. solar feed-in and GreenPower) may vary and are not secured. We'll let you know what your options are at the end of the fixed priced period in accordance with the regulatory requirements. We do not issue paper bills and require a credit card or bank details. For more information in relation to Powershop and this offer, see full terms and conditions at: www.powershop.com.au/terms-and-conditions |
| ESC licence information | Electricity and gas retail licence under Powershop Australia Pty Ltd |

Fees

(incl. GST)

| | |
|---|---------------------------|
| Early termination fee | Flat rate: \$0.00 |
| This Powershop offer has no exit fees | |
| Credit card payment processing fee | Flat rate: \$0.00 |
| Powershop do not charge credit card fees. | |
| Disconnection fee | Flat rate: \$54.52 |
| Disconnection fees may apply to manually de-energise a property. The fee will be passed on from your distributor and may vary. | |
| Disconnection fee | Flat rate: \$12.28 |
| Disconnection fees may apply to remotely de-energise a property. The fee will be passed on from your distributor and may vary. | |
| Additional information | |
| In addition to the applicable prices, you may incur other fees, including disconnection fees. Information regarding fees is set out on our fees page powershop.com.au/fees . | |

Billing details

| | |
|------------------------|--------------|
| Bill frequency | 1 month |
| Payment options | Direct debit |

Offer rate and details

Local time

Season 1 electricity charges - Non-Summer (01-Jul - 31-Oct) Tariff (incl. GST)

| | |
|----------------------------|--------------|
| Daily supply charge | 114.97 c/day |
|----------------------------|--------------|

Peak consumption – Mon - Fri, 7am - 11pm

| | |
|-----------------|------------|
| All consumption | 31.68c/kWh |
|-----------------|------------|

Off-peak consumption – Mon - Fri, 12am - 7am; Mon - Fri, 11pm - 12am; Sat - Sun, all day

| | |
|-----------------|------------|
| All consumption | 22.92c/kWh |
|-----------------|------------|

Season 2 electricity charges - Summer (01-Nov - 31-Mar) Tariff (incl. GST)

| | |
|----------------------------|--------------|
| Daily supply charge | 114.97 c/day |
|----------------------------|--------------|

Peak consumption – Mon - Fri, 7am - 11pm

| | |
|-----------------|------------|
| All consumption | 31.68c/kWh |
|-----------------|------------|

Off-peak consumption – Mon - Fri, 12am - 7am; Mon - Fri, 11pm - 12am; Sat - Sun, all day

| | |
|-----------------|------------|
| All consumption | 22.92c/kWh |
|-----------------|------------|

| | |
|---|----------------------------|
| Demand charge – Mon - Fri, 2pm - 7pm | 61.35 cents per kW per Day |
|---|----------------------------|

Summer Demand Incentive Charge

Demand calculation is based on the maximum measured interval consumption occurring between 2pm - 7pm Mon - Fri.

Applies per Month on the maximum kW demand for all usage.

Season 3 electricity charges - Non-Summer (01-Apr - 30-Jun) Tariff (incl. GST)

| | |
|----------------------------|--------------|
| Daily supply charge | 114.97 c/day |
|----------------------------|--------------|

Peak consumption – Mon - Fri, 7am - 11pm

| | |
|-----------------|------------|
| All consumption | 31.68c/kWh |
|-----------------|------------|

Off-peak consumption – Mon - Fri, 12am - 7am; Mon - Fri, 11pm - 12am; Sat - Sun, all day

| | |
|-----------------|------------|
| All consumption | 22.92c/kWh |
|-----------------|------------|

Controlled load charges Tariff (incl. GST)

| | |
|------------------------------------|-------------|
| Controlled load consumption | 19.47 c/kWh |
|------------------------------------|-------------|

Daily supply charge: a charge that applies for supplying electricity to your premises for each day of the billing period, regardless of how much electricity is used.

kWh: a 'kWh' stands for kilowatt hour and is the unit of measurement for your electricity bill.

Solar feed-in tariff options

| | Tariff |
|--|-------------|
| Current retailer feed-in tariff | 10.20 c/kWh |
| Premium feed-in tariff | 70.20 c/kWh |

GreenPower options

When you choose to buy a GreenPower product from an energy retailer, the retailer then invests the additional charge in the renewable energy industry. These purchases are audited by a group of government agencies.

| Option | Description | Price (incl. GST) |
|------------------------|--|--------------------|
| 10% GreenPower | Your GreenPower preference can be set within your online account and changed at any time. No discount apply to GreenPower charges. | 0.37 cents per kWh |
| 100% GreenPower | Your GreenPower preference can be set within your online account and changed at any time. No discount apply to GreenPower charges. | 3.74 cents per kWh |
| 25% GreenPower | Your GreenPower preference can be set within your online account and changed at any time. No discount apply to GreenPower charges. | 0.94 cents per kWh |
| 50% GreenPower | Your GreenPower preference can be set within your online account and changed at any time. No discount apply to GreenPower charges. | 1.87 cents per kWh |



Powershop Australia Pty Ltd

- No contract term
- Time of use

- Call 1800 462 668
- www.powershop.com.au

Estimated Electricity costs

We are unable to provide an estimate for this offer.

Please contact **Powershop Australia Pty Ltd** on **1800 462 668** for pricing details.



Features

- Direct debit payment required
- No pay on time discount
- Green power
- Fixed price contract
- No paper bills available

Estimated costs are based on typical usage in your postcode, with regular usage on weekday afternoons and evenings. Your household's usage may vary. Costs exclude controlled load charges, solar payments, concessions and bonuses.

A more personalised estimate can be found on the Victorian Energy Compare website at <https://compare.energy.vic.gov.au>.

Retailers must provide clear advice to help customers find the offer that best suits their circumstances.

Contact the retailer by calling **1800 462 668** and quote this Offer ID **POD205254MS**.

Offer details

| | |
|----------------------|----------------------|
| Distributor | United Energy |
| Offer type | Market offer |
| Fuel type | Electricity |
| Customer type | Small business |
| Release date | 01-10-2020 |
| Expiry date | Contact the retailer |

Offer eligibility

Eligibility criteria may apply, contact Powershop for details.

Contract details

| | |
|----------------------------------|--|
| Contract term | No contract term |
| Cooling off period | 10 business days |
| Eligibility criteria | Eligibility criteria may apply, contact Powershop for details. |
| Prices are fixed | |
| Contract expiry details | This Powershop offer is an ongoing contract (until you or we end it) with no exit fees. Your daily supply and usage charges are secured until 31 December 2021. Your usage and supply charges may vary if your network tariff is changed |
| Full terms and conditions | Other fees and charges (incl. solar feed-in and GreenPower) may vary and are not secured. We'll let you know what your options are at the end of the fixed priced period in accordance with the regulatory requirements. We do not issue paper bills and require a credit card or bank details. For more information in relation to Powershop and this offer, see full terms and conditions at: www.powershop.com.au/terms-and-conditions |
| ESC licence information | Electricity and gas retail licence under Powershop Australia Pty Ltd |

Fees

(incl. GST)

| | |
|---|---------------------------|
| Early termination fee | Flat rate: \$0.00 |
| This Powershop offer has no exit fees | |
| Credit card payment processing fee | Flat rate: \$0.00 |
| Powershop do not charge credit card fees. | |
| Disconnection fee | Flat rate: \$54.52 |
| Disconnection fees may apply to manually de-energise a property. The fee will be passed on from your distributor and may vary. | |
| Disconnection fee | Flat rate: \$12.28 |
| Disconnection fees may apply to remotely de-energise a property. The fee will be passed on from your distributor and may vary. | |
| Additional information | |
| In addition to the applicable prices, you may incur other fees, including disconnection fees. Information regarding fees is set out on our fees page powershop.com.au/fees . | |

Billing details

| | |
|------------------------|--------------|
| Bill frequency | 1 month |
| Payment options | Direct debit |

Offer rate and details

Local time

Season 1 electricity charges - Non-Summer (01-Jul - 31-Oct) Tariff (incl. GST)

| | |
|----------------------------|--------------|
| Daily supply charge | 114.97 c/day |
|----------------------------|--------------|

Peak consumption – Mon - Fri, 7am - 7pm

| | |
|-----------------|------------|
| All consumption | 31.68c/kWh |
|-----------------|------------|

Off-peak consumption – Mon - Fri, 12am - 7am; Mon - Fri, 7pm - 12am; Sat - Sun, all day

| | |
|-----------------|------------|
| All consumption | 22.92c/kWh |
|-----------------|------------|

Season 2 electricity charges - Summer (01-Nov - 31-Mar) Tariff (incl. GST)

| | |
|----------------------------|--------------|
| Daily supply charge | 114.97 c/day |
|----------------------------|--------------|

Peak consumption – Mon - Fri, 7am - 7pm

| | |
|-----------------|------------|
| All consumption | 31.68c/kWh |
|-----------------|------------|

Off-peak consumption – Mon - Fri, 12am - 7am; Mon - Fri, 7pm - 12am; Sat - Sun, all day

| | |
|-----------------|------------|
| All consumption | 22.92c/kWh |
|-----------------|------------|

| | |
|---|----------------------------|
| Demand charge – Mon - Fri, 3pm - 6pm | 73.30 cents per kW per Day |
|---|----------------------------|

Summer Demand Incentive Charge

Demand calculation is based on the maximum measured interval consumption occurring between 3pm - 6pm Mon - Fri.

Applies per Month on the maximum kW demand for all usage.

Season 3 electricity charges - Non-Summer (01-Apr - 30-Jun) Tariff (incl. GST)

| | |
|----------------------------|--------------|
| Daily supply charge | 114.97 c/day |
|----------------------------|--------------|

Peak consumption – Mon - Fri, 7am - 7pm

| | |
|-----------------|------------|
| All consumption | 31.68c/kWh |
|-----------------|------------|

Off-peak consumption – Mon - Fri, 12am - 7am; Mon - Fri, 7pm - 12am; Sat - Sun, all day

| | |
|-----------------|------------|
| All consumption | 22.92c/kWh |
|-----------------|------------|

Daily supply charge: a charge that applies for supplying electricity to your premises for each day of the billing period, regardless of how much electricity is used.

kWh: a 'kWh' stands for kilowatt hour and is the unit of measurement for your electricity bill.

Solar feed-in tariff options

| | Tariff |
|--|---------------|
| Current retailer feed-in tariff | 10.20 c/kWh |
| Premium feed-in tariff | 70.20 c/kWh |

GreenPower options

When you choose to buy a GreenPower product from an energy retailer, the retailer then invests the additional charge in the renewable energy industry. These purchases are audited by a group of government agencies.

| Option | Description | Price (incl. GST) |
|------------------------|--|--------------------------|
| 10% GreenPower | Your GreenPower preference can be set within your online account and changed at any time. No discount apply to GreenPower charges. | 0.37 cents per kWh |
| 100% GreenPower | Your GreenPower preference can be set within your online account and changed at any time. No discount apply to GreenPower charges. | 3.74 cents per kWh |
| 25% GreenPower | Your GreenPower preference can be set within your online account and changed at any time. No discount apply to GreenPower charges. | 0.94 cents per kWh |
| 50% GreenPower | Your GreenPower preference can be set within your online account and changed at any time. No discount apply to GreenPower charges. | 1.87 cents per kWh |



Powershop Australia Pty Ltd

- No contract term
- Time of use with controlled load

- Call 1800 462 668
- www.powershop.com.au

Estimated Electricity costs

We are unable to provide an estimate for this offer.

Please contact **Powershop Australia Pty Ltd** on **1800 462 668** for pricing details.



Features

- Direct debit payment required
- No pay on time discount
- Green power
- Fixed price contract
- No paper bills available

Estimated costs are based on typical usage in your postcode, with regular usage on weekday afternoons and evenings. Your household's usage may vary. Costs exclude controlled load charges, solar payments, concessions and bonuses.

A more personalised estimate can be found on the Victorian Energy Compare website at <https://compare.energy.vic.gov.au>.

Retailers must provide clear advice to help customers find the offer that best suits their circumstances.

Contact the retailer by calling **1800 462 668** and quote this Offer ID **POD205258MS**.

Offer details

| | |
|----------------------|----------------------|
| Distributor | United Energy |
| Offer type | Market offer |
| Fuel type | Electricity |
| Customer type | Small business |
| Release date | 01-10-2020 |
| Expiry date | Contact the retailer |

Offer eligibility

Eligibility criteria may apply, contact Powershop for details.

Contract details

| | |
|----------------------------------|--|
| Contract term | No contract term |
| Cooling off period | 10 business days |
| Eligibility criteria | Eligibility criteria may apply, contact Powershop for details. |
| Prices are fixed | |
| Contract expiry details | This Powershop offer is an ongoing contract (until you or we end it) with no exit fees. Your daily supply and usage charges are secured until 31 December 2021. Your usage and supply charges may vary if your network tariff is changed |
| Full terms and conditions | Other fees and charges (incl. solar feed-in and GreenPower) may vary and are not secured. We'll let you know what your options are at the end of the fixed priced period in accordance with the regulatory requirements. We do not issue paper bills and require a credit card or bank details. For more information in relation to Powershop and this offer, see full terms and conditions at: www.powershop.com.au/terms-and-conditions |
| ESC licence information | Electricity and gas retail licence under Powershop Australia Pty Ltd |

Fees

(incl. GST)

| | |
|---|---------------------------|
| Early termination fee | Flat rate: \$0.00 |
| This Powershop offer has no exit fees | |
| Credit card payment processing fee | Flat rate: \$0.00 |
| Powershop do not charge credit card fees. | |
| Disconnection fee | Flat rate: \$54.52 |
| Disconnection fees may apply to manually de-energise a property. The fee will be passed on from your distributor and may vary. | |
| Disconnection fee | Flat rate: \$12.28 |
| Disconnection fees may apply to remotely de-energise a property. The fee will be passed on from your distributor and may vary. | |
| Additional information | |
| In addition to the applicable prices, you may incur other fees, including disconnection fees. Information regarding fees is set out on our fees page powershop.com.au/fees . | |

Billing details

| | |
|------------------------|--------------|
| Bill frequency | 1 month |
| Payment options | Direct debit |

Offer rate and details

Local time

Season 1 electricity charges - Non-Summer (01-Jul - 31-Oct) Tariff (incl. GST)

| | |
|----------------------------|--------------|
| Daily supply charge | 114.97 c/day |
|----------------------------|--------------|

Peak consumption – Mon - Fri, 7am - 7pm

| | |
|-----------------|------------|
| All consumption | 31.68c/kWh |
|-----------------|------------|

Off-peak consumption – Mon - Fri, 12am - 7am; Mon - Fri, 7pm - 12am; Sat - Sun, all day

| | |
|-----------------|------------|
| All consumption | 22.92c/kWh |
|-----------------|------------|

Season 2 electricity charges - Summer (01-Nov - 31-Mar) Tariff (incl. GST)

| | |
|----------------------------|--------------|
| Daily supply charge | 114.97 c/day |
|----------------------------|--------------|

Peak consumption – Mon - Fri, 7am - 7pm

| | |
|-----------------|------------|
| All consumption | 31.68c/kWh |
|-----------------|------------|

Off-peak consumption – Mon - Fri, 12am - 7am; Mon - Fri, 7pm - 12am; Sat - Sun, all day

| | |
|-----------------|------------|
| All consumption | 22.92c/kWh |
|-----------------|------------|

| | |
|---|----------------------------|
| Demand charge – Mon - Fri, 3pm - 6pm | 73.30 cents per kW per Day |
|---|----------------------------|

Summer Demand Incentive Charge

Demand calculation is based on the maximum measured interval consumption occurring between 3pm - 6pm Mon - Fri.

Applies per Month on the maximum kW demand for all usage.

Season 3 electricity charges - Non-Summer (01-Apr - 30-Jun) Tariff (incl. GST)

| | |
|----------------------------|--------------|
| Daily supply charge | 114.97 c/day |
|----------------------------|--------------|

Peak consumption – Mon - Fri, 7am - 7pm

| | |
|-----------------|------------|
| All consumption | 31.68c/kWh |
|-----------------|------------|

Off-peak consumption – Mon - Fri, 12am - 7am; Mon - Fri, 7pm - 12am; Sat - Sun, all day

| | |
|-----------------|------------|
| All consumption | 22.92c/kWh |
|-----------------|------------|

Controlled load charges Tariff (incl. GST)

| | |
|------------------------------------|-------------|
| Controlled load consumption | 19.47 c/kWh |
|------------------------------------|-------------|

Daily supply charge: a charge that applies for supplying electricity to your premises for each day of the billing period, regardless of how much electricity is used.

kWh: a 'kWh' stands for kilowatt hour and is the unit of measurement for your electricity bill.

Solar feed-in tariff options

| | Tariff |
|--|-------------|
| Current retailer feed-in tariff | 10.20 c/kWh |
| Premium feed-in tariff | 70.20 c/kWh |

GreenPower options

When you choose to buy a GreenPower product from an energy retailer, the retailer then invests the additional charge in the renewable energy industry. These purchases are audited by a group of government agencies.

| Option | Description | Price (incl. GST) |
|------------------------|--|--------------------|
| 10% GreenPower | Your GreenPower preference can be set within your online account and changed at any time. No discount apply to GreenPower charges. | 0.37 cents per kWh |
| 100% GreenPower | Your GreenPower preference can be set within your online account and changed at any time. No discount apply to GreenPower charges. | 3.74 cents per kWh |
| 25% GreenPower | Your GreenPower preference can be set within your online account and changed at any time. No discount apply to GreenPower charges. | 0.94 cents per kWh |
| 50% GreenPower | Your GreenPower preference can be set within your online account and changed at any time. No discount apply to GreenPower charges. | 1.87 cents per kWh |