

Victorian Energy Fact Sheet

When you're signing up to something new, it's important to know what's what. Here's some essential info about Powershop and this offer.

**ELECTRICITY**OFFER **POWERSHOPLITE**DISTRIBUTOR **CITIPOWER**

About Powershop

We sell energy to homes and businesses in Victoria, NSW, South East QLD and South Australia. We work hard to provide better prices, a fairer deal for all our customers, and a better future for the planet.



Get energy insights and stay in control of your energy use

OVER 200,000
app downloads



Get the best service from our award winning Customer Team

93% average
customer
satisfaction rating

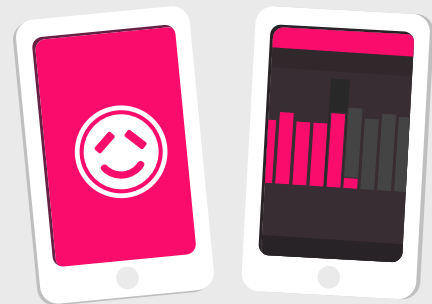


Get 100% carbon offset energy at no extra cost to you

OVER 1.8 Million
tonnes of carbon offset
thanks to Powershop customers

About this offer

This is a simple set and forget offer with no discounts, just a great rate. You get access to the Powershop app to manage your bills and energy usage.



Need Help?

Visit our help centre:
powershop.com.au/help

Call us on:
1800 462 668

The following pages have been created by the Victorian Energy Compare Government website.

Get in touch if you're not sure how to read the info on the following pages. We can help you understand which rates, tariff and climate zone applies to you.

You can also visit
powershop.com.au/vic-energy-fact-sheets



Powershop Australia Pty Ltd

- No contract term
- Single rate

- Call 1800 462 668
- www.powershop.com.au

Estimated electricity cost

1 person	LOW 7.2 kWh/day	\$1,030/year No discount conditions apply to this offer
2 to 3 people	MED 11.8 kWh/day	\$1,440/year No discount conditions apply to this offer
4+ people	HIGH 15.5 kWh/day	\$1,760/year No discount conditions apply to this offer

Features

- Direct debit payment required
- No pay on time discount
- Green power
- Fixed price contract
- No paper bills available

Estimated costs are inclusive of GST and are based on typical usage in your postcode, with regular usage on weekday afternoons and evenings. Your household's usage may vary. Costs exclude controlled load charges, solar payments, concessions and bonuses. A more personalised estimate can be found on the Victorian Energy Compare website at <https://compare.energy.vic.gov.au>. Retailers must provide clear advice to help customers find the offer that best suits their circumstances. Contact the retailer by calling **1800 462 668** and quote this Offer ID **POD190191MR**.

Offer details

Distributor	Citipower
Offer type	Market offer
Fuel type	Electricity
Customer type	Residential
Release date	01-07-2020
Expiry date	31-12-2020

Offer eligibility

Eligibility criteria may apply, contact Powershop for details.

Contract details

Contract term	No contract term
Cooling off period	10 business days
Eligibility criteria	Eligibility criteria may apply, contact Powershop for details.
Prices are fixed	
Contract expiry details	This Powershop offer is an ongoing contract (until you or we end it) with no exit fees. Your daily supply and usage charges are secured until 30 September 2021.
Full terms and conditions	Other fees and charges (incl. solar feed-in and GreenPower) may vary and are not secured. We'll let you know what your options are at the end of the benefit period in accordance with the regulatory requirements. We do not issue paper bills and require a credit card or bank details. For more information in relation to Powershop and this offer, see full terms and conditions at: www.powershop.com.au/terms-and-conditions

Fees

	(incl. GST)
Early termination fee	Flat rate: \$0.00
This Powershop offer has no exit fees	

Credit card payment processing fee	Flat rate: \$0.00
Powershop do not charge credit card fees.	

Disconnection fee	Flat rate: \$42.42
Disconnection fees may apply to manually de-energise a property. The fee will be passed on from your distributor and may vary.	

Disconnection fee	Flat rate: \$12.04
Disconnection fees may apply to remotely de-energise a property. The fee will be passed on from your distributor and may vary.	

Additional information

In addition to the applicable prices, you may incur other fees, including disconnection fees. Information regarding fees is set out on our fees page powershop.com.au/fees

Billing details

Bill frequency	1 month
Payment options	Direct debit

Offer rate and details

Local time

Electricity charges (All year)	Tariff (incl. GST)
---------------------------------------	---------------------------

Daily supply charge	109.80 c/day
----------------------------	--------------

Peak consumption	
All consumption	24.11c/kWh

Daily supply charge: a charge that applies for supplying electricity to your premises for each day of the billing period, regardless of how much electricity is used.

kWh: a 'kWh' stands for kilowatt hour and is the unit of measurement for your electricity bill.

Solar feed-in tariff options

	Tariff
Current retailer feed-in tariff	10.20 c/kWh
Premium feed-in tariff	70.20 c/kWh

GreenPower options

When you choose to buy a GreenPower product from an energy retailer, the retailer then invests the additional charge in the renewable energy industry. These purchases are audited by a group of government agencies.

Option	Description	Price (incl. GST)
10% GreenPower	Your GreenPower preference can be set within your online account and changed at any time. No discount apply to GreenPower charges.	0.37 cents per kWh
100% GreenPower	Your GreenPower preference can be set within your online account and changed at any time. No discount apply to GreenPower charges.	3.74 cents per kWh
25% GreenPower	Your GreenPower preference can be set within your online account and changed at any time. No discount apply to GreenPower charges.	0.94 cents per kWh
50% GreenPower	Your GreenPower preference can be set within your online account and changed at any time. No discount apply to GreenPower charges.	1.87 cents per kWh

Climate zone 6: Mild temperate



Powershop Australia Pty Ltd

- No contract term
- Two rate: single rate with controlled load

- Call 1800 462 668
- www.powershop.com.au

Estimated electricity cost

1 person	LOW 7.2 kWh/day	\$1,030/year No discount conditions apply to this offer
2 to 3 people	MED 11.8 kWh/day	\$1,440/year No discount conditions apply to this offer
4+ people	HIGH 15.5 kWh/day	\$1,760/year No discount conditions apply to this offer

Features

- Direct debit payment required
- No pay on time discount
- Green power
- Fixed price contract
- No paper bills available

Estimated costs are inclusive of GST and are based on typical usage in your postcode, with regular usage on weekday afternoons and evenings. Your household's usage may vary. Costs exclude controlled load charges, solar payments, concessions and bonuses. A more personalised estimate can be found on the Victorian Energy Compare website at <https://compare.energy.vic.gov.au>. Retailers must provide clear advice to help customers find the offer that best suits their circumstances. Contact the retailer by calling **1800 462 668** and quote this Offer ID **POD190192MR**.

Offer details

Distributor	Citipower
Offer type	Market offer
Fuel type	Electricity
Customer type	Residential
Release date	01-07-2020
Expiry date	31-12-2020

Offer eligibility

Eligibility criteria may apply, contact Powershop for details.

Contract details

Contract term	No contract term
Cooling off period	10 business days
Eligibility criteria	Eligibility criteria may apply, contact Powershop for details.
Prices are fixed	
Contract expiry details	This Powershop offer is an ongoing contract (until you or we end it) with no exit fees. Your daily supply and usage charges are secured until 30 September 2021.
Full terms and conditions	Other fees and charges (incl. solar feed-in and GreenPower) may vary and are not secured. We'll let you know what your options are at the end of the benefit period in accordance with the regulatory requirements. We do not issue paper bills and require a credit card or bank details. For more information in relation to Powershop and this offer, see full terms and conditions at: www.powershop.com.au/terms-and-conditions

Fees

	(incl. GST)
Early termination fee	Flat rate: \$0.00
This Powershop offer has no exit fees	

Credit card payment processing fee	Flat rate: \$0.00
Powershop do not charge credit card fees.	

Disconnection fee	Flat rate: \$42.42
Disconnection fees may apply to manually de-energise a property. The fee will be passed on from your distributor and may vary.	

Disconnection fee	Flat rate: \$12.04
Disconnection fees may apply to remotely de-energise a property. The fee will be passed on from your distributor and may vary.	

Additional information

In addition to the applicable prices, you may incur other fees, including disconnection fees. Information regarding fees is set out on our fees page powershop.com.au/fees

Billing details

Bill frequency	1 month
Payment options	Direct debit

Offer rate and details

Local time

Electricity charges (All year)	Tariff (incl. GST)
---------------------------------------	---------------------------

Daily supply charge	109.80 c/day
----------------------------	--------------

Peak consumption	
All consumption	24.11c/kWh

Controlled load charges	Tariff (incl. GST)
--------------------------------	---------------------------

Controlled load consumption	19.24 c/kWh
------------------------------------	-------------

Daily supply charge: a charge that applies for supplying electricity to your premises for each day of the billing period, regardless of how much electricity is used.

kWh: a 'kWh' stands for kilowatt hour and is the unit of measurement for your electricity bill.

Solar feed-in tariff options

	Tariff
Current retailer feed-in tariff	10.20 c/kWh
Premium feed-in tariff	70.20 c/kWh

GreenPower options

When you choose to buy a GreenPower product from an energy retailer, the retailer then invests the additional charge in the renewable energy industry. These purchases are audited by a group of government agencies.

Option	Description	Price (incl. GST)
10% GreenPower	Your GreenPower preference can be set within your online account and changed at any time. No discount apply to GreenPower charges.	0.37 cents per kWh
100% GreenPower	Your GreenPower preference can be set within your online account and changed at any time. No discount apply to GreenPower charges.	3.74 cents per kWh
25% GreenPower	Your GreenPower preference can be set within your online account and changed at any time. No discount apply to GreenPower charges.	0.94 cents per kWh

Option	Description	Price (incl. GST)
50% GreenPower	Your GreenPower preference can be set within your online account and changed at any time. No discount apply to GreenPower charges.	1.87 cents per kWh

Climate zone 6: Mild temperate



Powershop Australia Pty Ltd

- No contract term
- Single rate

- Call 1800 462 668
- www.powershop.com.au

Estimated Electricity costs

This plan includes demand charges.

We are unable to provide an estimate for this offer.

Please contact **Powershop Australia Pty Ltd** on **1800 462 668** for pricing details.



Features

- Direct debit payment required
- No pay on time discount
- Green power
- Fixed price contract
- No paper bills available

Estimated costs are based on typical usage in your postcode, with regular usage on weekday afternoons and evenings. Your household's usage may vary. Costs exclude controlled load charges, solar payments, concessions and bonuses.

A more personalised estimate can be found on the Victorian Energy Compare website at <https://compare.energy.vic.gov.au>.

Retailers must provide clear advice to help customers find the offer that best suits their circumstances.

Contact the retailer by calling **1800 462 668** and quote this Offer ID **POD190193MR**.

Offer details

Distributor	Citipower
Offer type	Market offer
Fuel type	Electricity
Customer type	Residential
Release date	01-07-2020
Expiry date	31-12-2020

Offer eligibility

Eligibility criteria may apply, contact Powershop for details.

Contract details

Contract term	No contract term
Cooling off period	10 business days
Eligibility criteria	Eligibility criteria may apply, contact Powershop for details.
Prices are fixed	
Contract expiry details	This Powershop offer is an ongoing contract (until you or we end it) with no exit fees. Your daily supply and usage charges are secured until 30 September 2021.
Full terms and conditions	Other fees and charges (incl. solar feed-in and GreenPower) may vary and are not secured. We'll let you know what your options are at the end of the benefit period in accordance with the regulatory requirements. We do not issue paper bills and require a credit card or bank details. For more information in relation to Powershop and this offer, see full terms and conditions at: www.powershop.com.au/terms-and-conditions

Fees

	(incl. GST)
Early termination fee	Flat rate: \$0.00
This Powershop offer has no exit fees	

Credit card payment processing fee	Flat rate: \$0.00
Powershop do not charge credit card fees.	

Disconnection fee	Flat rate: \$42.42
Disconnection fees may apply to manually de-energise a property. The fee will be passed on from your distributor and may vary.	

Disconnection fee	Flat rate: \$12.04
Disconnection fees may apply to remotely de-energise a property. The fee will be passed on from your distributor and may vary.	

Additional information

In addition to the applicable prices, you may incur other fees, including disconnection fees. Information regarding fees is set out on our fees page powershop.com.au/fees

Billing details

Bill frequency	1 month
Payment options	Direct debit

Offer rate and details

Local time

Season 1 electricity charges - Non-Summer (01-Jul - 30-Nov)	Tariff (incl. GST)
--	---------------------------

Daily supply charge	109.80 c/day
----------------------------	--------------

Peak consumption

All consumption	21.08c/kWh
-----------------	------------

Demand charge – Mon - Fri, 3pm - 9pm	10.78 cents per kW per Day
---	----------------------------

Non-Summer Demand Charge

Demand calculation is based on the maximum measured interval consumption occurring between 3pm - 9pm Mon - Fri.

Applies per Month on the maximum kW demand for all usage.

Season 2 electricity charges - Summer (01-Dec - 31-Mar)	Tariff (incl. GST)
--	---------------------------

Daily supply charge	109.80 c/day
----------------------------	--------------

Peak consumption

All consumption	21.08c/kWh
-----------------	------------

Demand charge – Mon - Fri, 3pm - 9pm	31.42 cents per kW per Day
---	----------------------------

Summer Demand Charge

Demand calculation is based on the maximum measured interval consumption occurring between 3pm - 9pm Mon - Fri.

Applies per Month on the maximum kW demand for all usage.

Season 3 electricity charges - Non-Summer (01-Apr - 30-Jun)	Tariff (incl. GST)
--	---------------------------

Daily supply charge	109.80 c/day
----------------------------	--------------

Peak consumption

All consumption	21.08c/kWh
-----------------	------------

Demand charge – Mon - Fri, 3pm - 9pm	10.78 cents per kW per Day
---	----------------------------

Non-Summer Demand Charge

Demand calculation is based on the maximum measured interval consumption occurring between 3pm - 9pm Mon - Fri.

Applies per Month on the maximum kW demand for all usage.

Daily supply charge: a charge that applies for supplying electricity to your premises for each day of the billing period, regardless of how much electricity is used.

kWh: a 'kWh' stands for kilowatt hour and is the unit of measurement for your electricity bill.

Solar feed-in tariff options

	Tariff
Current retailer feed-in tariff	10.20 c/kWh
Premium feed-in tariff	70.20 c/kWh

GreenPower options

When you choose to buy a GreenPower product from an energy retailer, the retailer then invests the additional charge in the renewable energy industry. These purchases are audited by a group of government agencies.

Option	Description	Price (incl. GST)
10% GreenPower	Your GreenPower preference can be set within your online account and changed at any time. No discount apply to GreenPower charges.	0.37 cents per kWh
100% GreenPower	Your GreenPower preference can be set within your online account and changed at any time. No discount apply to GreenPower charges.	3.74 cents per kWh
25% GreenPower	Your GreenPower preference can be set within your online account and changed at any time. No discount apply to GreenPower charges.	0.94 cents per kWh
50% GreenPower	Your GreenPower preference can be set within your online account and changed at any time. No discount apply to GreenPower charges.	1.87 cents per kWh

**Powershop Australia Pty Ltd**

- No contract term
- Single rate

- Call 1800 462 668
- www.powershop.com.au

Estimated Electricity costs

This plan includes demand charges.

We are unable to provide an estimate for this offer.

Please contact **Powershop Australia Pty Ltd** on **1800 462 668** for pricing details.

**Features**

- Direct debit payment required
- No pay on time discount
- Green power
- Fixed price contract
- No paper bills available

Estimated costs are based on typical usage in your postcode, with regular usage on weekday afternoons and evenings. Your household's usage may vary. Costs exclude controlled load charges, solar payments, concessions and bonuses.

A more personalised estimate can be found on the Victorian Energy Compare website at <https://compare.energy.vic.gov.au>.

Retailers must provide clear advice to help customers find the offer that best suits their circumstances.

Contact the retailer by calling **1800 462 668** and quote this Offer ID **POD190194MR**.

Offer details

Distributor	Citipower
Offer type	Market offer
Fuel type	Electricity
Customer type	Residential
Release date	01-07-2020
Expiry date	31-12-2020

Offer eligibility

Eligibility criteria may apply, contact Powershop for details.

Contract details

Contract term	No contract term
Cooling off period	10 business days
Eligibility criteria	Eligibility criteria may apply, contact Powershop for details.
Prices are fixed	
Contract expiry details	This Powershop offer is an ongoing contract (until you or we end it) with no exit fees. Your daily supply and usage charges are secured until 30 September 2021.
Full terms and conditions	Other fees and charges (incl. solar feed-in and GreenPower) may vary and are not secured. We'll let you know what your options are at the end of the benefit period in accordance with the regulatory requirements. We do not issue paper bills and require a credit card or bank details. For more information in relation to Powershop and this offer, see full terms and conditions at: www.powershop.com.au/terms-and-conditions

Fees

	(incl. GST)
Early termination fee	Flat rate: \$0.00
This Powershop offer has no exit fees	

Credit card payment processing fee	Flat rate: \$0.00
Powershop do not charge credit card fees.	

Disconnection fee	Flat rate: \$42.42
Disconnection fees may apply to manually de-energise a property. The fee will be passed on from your distributor and may vary.	

Disconnection fee	Flat rate: \$12.04
Disconnection fees may apply to remotely de-energise a property. The fee will be passed on from your distributor and may vary.	

Additional information

In addition to the applicable prices, you may incur other fees, including disconnection fees. Information regarding fees is set out on our fees page powershop.com.au/fees

Billing details

Bill frequency	1 month
Payment options	Direct debit

Offer rate and details

Local time

Season 1 electricity charges - Non-Summer (01-Jul - 30-Nov)	Tariff (incl. GST)
--	---------------------------

Daily supply charge	109.80 c/day
----------------------------	--------------

Peak consumption

All consumption	21.08c/kWh
-----------------	------------

Demand charge – Mon - Fri, 3pm - 9pm	8.62 cents per kW per Day
---	---------------------------

Non-Summer Demand Charge

Demand calculation is based on the maximum measured interval consumption occurring between 3pm - 9pm Mon - Fri.

Applies per Month on the maximum kW demand for all usage.

Season 2 electricity charges - Summer (01-Dec - 31-Mar)	Tariff (incl. GST)
--	---------------------------

Daily supply charge	109.80 c/day
----------------------------	--------------

Peak consumption

All consumption	21.08c/kWh
-----------------	------------

Demand charge – Mon - Fri, 3pm - 9pm	25.58 cents per kW per Day
---	----------------------------

Summer Demand Charge

Demand calculation is based on the maximum measured interval consumption occurring between 3pm - 9pm Mon - Fri.

Applies per Month on the maximum kW demand for all usage.

Season 3 electricity charges - Non-Summer (01-Apr - 30-Jun)	Tariff (incl. GST)
--	---------------------------

Daily supply charge	109.80 c/day
----------------------------	--------------

Peak consumption

All consumption	21.08c/kWh
-----------------	------------

Demand charge – Mon - Fri, 3pm - 9pm	8.62 cents per kW per Day
---	---------------------------

Non-Summer Demand Charge

Demand calculation is based on the maximum measured interval consumption occurring between 3pm - 9pm Mon - Fri.

Applies per Month on the maximum kW demand for all usage.

Daily supply charge: a charge that applies for supplying electricity to your premises for each day of the billing period, regardless of how much electricity is used.

kWh: a 'kWh' stands for kilowatt hour and is the unit of measurement for your electricity bill.

Solar feed-in tariff options

	Tariff
Current retailer feed-in tariff	10.20 c/kWh
Premium feed-in tariff	70.20 c/kWh

GreenPower options

When you choose to buy a GreenPower product from an energy retailer, the retailer then invests the additional charge in the renewable energy industry. These purchases are audited by a group of government agencies.

Option	Description	Price (incl. GST)
10% GreenPower	Your GreenPower preference can be set within your online account and changed at any time. No discount apply to GreenPower charges.	0.37 cents per kWh
100% GreenPower	Your GreenPower preference can be set within your online account and changed at any time. No discount apply to GreenPower charges.	3.74 cents per kWh
25% GreenPower	Your GreenPower preference can be set within your online account and changed at any time. No discount apply to GreenPower charges.	0.94 cents per kWh
50% GreenPower	Your GreenPower preference can be set within your online account and changed at any time. No discount apply to GreenPower charges.	1.87 cents per kWh



Powershop Australia Pty Ltd

- No contract term
- Time of use

- Call 1800 462 668
- www.powershop.com.au

Estimated electricity cost

1 person	LOW 7.2 kWh/day	\$1,060/year No discount conditions apply to this offer
2 to 3 people	MED 11.8 kWh/day	\$1,480/year No discount conditions apply to this offer
4+ people	HIGH 15.5 kWh/day	\$1,820/year No discount conditions apply to this offer

Features

- Direct debit payment required
- No pay on time discount
- Green power
- Fixed price contract
- No paper bills available

Estimated costs are inclusive of GST and are based on typical usage in your postcode, with regular usage on weekday afternoons and evenings. Your household's usage may vary. Costs exclude controlled load charges, solar payments, concessions and bonuses. A more personalised estimate can be found on the Victorian Energy Compare website at <https://compare.energy.vic.gov.au>. Retailers must provide clear advice to help customers find the offer that best suits their circumstances. Contact the retailer by calling **1800 462 668** and quote this Offer ID **POD189740MR**.

Offer details

Distributor	Citipower
Offer type	Market offer
Fuel type	Electricity
Customer type	Residential
Release date	01-07-2020
Expiry date	31-12-2020

Offer eligibility

Eligibility criteria may apply, contact Powershop for details.

Contract details

Contract term	No contract term
Cooling off period	10 business days
Eligibility criteria	Eligibility criteria may apply, contact Powershop for details.
Prices are fixed	
Contract expiry details	This Powershop offer is an ongoing contract (until you or we end it) with no exit fees. Your daily supply and usage charges are secured until 30 September 2021.
Full terms and conditions	Other fees and charges (incl. solar feed-in and GreenPower) may vary and are not secured. We'll let you know what your options are at the end of the benefit period in accordance with the regulatory requirements. We do not issue paper bills and require a credit card or bank details. For more information in relation to Powershop and this offer, see full terms and conditions at: www.powershop.com.au/terms-and-conditions

Fees

	(incl. GST)
Early termination fee	Flat rate: \$0.00
This Powershop offer has no exit fees	

Credit card payment processing fee	Flat rate: \$0.00
Powershop do not charge credit card fees.	

Disconnection fee	Flat rate: \$42.42
Disconnection fees may apply to manually de-energise a property. The fee will be passed on from your distributor and may vary.	

Disconnection fee	Flat rate: \$12.04
Disconnection fees may apply to remotely de-energise a property. The fee will be passed on from your distributor and may vary.	

Additional information

In addition to the applicable prices, you may incur other fees, including disconnection fees. Information regarding fees is set out on our fees page powershop.com.au/fees

Billing details

Bill frequency	1 month
Payment options	Direct debit

Offer rate and details

Local time

Electricity charges (All year)	Tariff (incl. GST)
---------------------------------------	---------------------------

Daily supply charge	109.80 c/day
----------------------------	--------------

Peak consumption – Mon - Fri, 7am - 11pm	
All consumption	30.27c/kWh

Off-peak consumption – Mon - Fri, 11pm - 12am; Mon - Fri, 12am - 7am; Sat - Sun, all day	
All consumption	19.54c/kWh

Daily supply charge: a charge that applies for supplying electricity to your premises for each day of the billing period, regardless of how much electricity is used.

kWh: a 'kWh' stands for kilowatt hour and is the unit of measurement for your electricity bill.

Solar feed-in tariff options

	Tariff
Current retailer feed-in tariff	10.20 c/kWh
Premium feed-in tariff	70.20 c/kWh

GreenPower options

When you choose to buy a GreenPower product from an energy retailer, the retailer then invests the additional charge in the renewable energy industry. These purchases are audited by a group of government agencies.

Option	Description	Price (incl. GST)
10% GreenPower	Your GreenPower preference can be set within your online account and changed at any time. No discount apply to GreenPower charges.	0.37 cents per kWh
100% GreenPower	Your GreenPower preference can be set within your online account and changed at any time. No discount apply to GreenPower charges.	3.74 cents per kWh
25% GreenPower	Your GreenPower preference can be set within your online account and changed at any time. No discount apply to GreenPower charges.	0.94 cents per kWh

Option	Description	Price (incl. GST)
50% GreenPower	Your GreenPower preference can be set within your online account and changed at any time. No discount apply to GreenPower charges.	1.87 cents per kWh

Climate zone 6: Mild temperate



Powershop Australia Pty Ltd

- No contract term
- Time of use with controlled load

- Call 1800 462 668
- www.powershop.com.au

Estimated electricity cost

1 person	LOW 7.2 kWh/day	\$1,060/year No discount conditions apply to this offer
2 to 3 people	MED 11.8 kWh/day	\$1,480/year No discount conditions apply to this offer
4+ people	HIGH 15.5 kWh/day	\$1,820/year No discount conditions apply to this offer

Features

- Direct debit payment required
- No pay on time discount
- Green power
- Fixed price contract
- No paper bills available

Estimated costs are inclusive of GST and are based on typical usage in your postcode, with regular usage on weekday afternoons and evenings. Your household's usage may vary. Costs exclude controlled load charges, solar payments, concessions and bonuses. A more personalised estimate can be found on the Victorian Energy Compare website at <https://compare.energy.vic.gov.au>. Retailers must provide clear advice to help customers find the offer that best suits their circumstances. Contact the retailer by calling **1800 462 668** and quote this Offer ID **POD189742MR**.

Offer details

Distributor	Citipower
Offer type	Market offer
Fuel type	Electricity
Customer type	Residential
Release date	01-07-2020
Expiry date	31-12-2020

Offer eligibility

Eligibility criteria may apply, contact Powershop for details.

Contract details

Contract term	No contract term
Cooling off period	10 business days
Eligibility criteria	Eligibility criteria may apply, contact Powershop for details.
Prices are fixed	
Contract expiry details	This Powershop offer is an ongoing contract (until you or we end it) with no exit fees. Your daily supply and usage charges are secured until 30 September 2021.
Full terms and conditions	Other fees and charges (incl. solar feed-in and GreenPower) may vary and are not secured. We'll let you know what your options are at the end of the benefit period in accordance with the regulatory requirements. We do not issue paper bills and require a credit card or bank details. For more information in relation to Powershop and this offer, see full terms and conditions at: www.powershop.com.au/terms-and-conditions

Fees

	(incl. GST)
Early termination fee	Flat rate: \$0.00
This Powershop offer has no exit fees	

Credit card payment processing fee	Flat rate: \$0.00
Powershop do not charge credit card fees.	
Disconnection fee	Flat rate: \$42.42
Disconnection fees may apply to manually de-energise a property. The fee will be passed on from your distributor and may vary.	
Disconnection fee	Flat rate: \$12.04
Disconnection fees may apply to remotely de-energise a property. The fee will be passed on from your distributor and may vary.	
Additional information	
In addition to the applicable prices, you may incur other fees, including disconnection fees. Information regarding fees is set out on our fees page powershop.com.au/fees	

Billing details

Bill frequency	1 month
Payment options	Direct debit

Offer rate and details

Local time

Electricity charges (All year)	Tariff (incl. GST)
Daily supply charge	109.80 c/day
Peak consumption – Mon - Fri, 7am - 11pm	
All consumption	30.27c/kWh
Off-peak consumption – Mon - Fri, 11pm - 12am; Mon - Fri, 12am - 7am; Sat - Sun, all day	
All consumption	19.54c/kWh
Controlled load charges	Tariff (incl. GST)
Controlled load consumption	19.24 c/kWh

Daily supply charge: a charge that applies for supplying electricity to your premises for each day of the billing period, regardless of how much electricity is used.

kWh: a 'kWh' stands for kilowatt hour and is the unit of measurement for your electricity bill.

Solar feed-in tariff options

	Tariff
Current retailer feed-in tariff	10.20 c/kWh
Premium feed-in tariff	70.20 c/kWh

GreenPower options

When you choose to buy a GreenPower product from an energy retailer, the retailer then invests the additional charge in the renewable energy industry. These purchases are audited by a group of government agencies.

Option	Description	Price (incl. GST)
10% GreenPower	Your GreenPower preference can be set within your online account and changed at any time. No discount apply to GreenPower charges.	0.37 cents per kWh
100% GreenPower	Your GreenPower preference can be set within your online account and changed at any time. No discount apply to GreenPower charges.	3.74 cents per kWh

Option	Description	Price (incl. GST)
25% GreenPower	Your GreenPower preference can be set within your online account and changed at any time. No discount apply to GreenPower charges.	0.94 cents per kWh
50% GreenPower	Your GreenPower preference can be set within your online account and changed at any time. No discount apply to GreenPower charges.	1.87 cents per kWh

Climate zone 6: Mild temperate



Powershop Australia Pty Ltd

- No contract term
- Flexible Pricing

- Call 1800 462 668
- www.powershop.com.au

Estimated electricity cost

1 person	LOW 7.2 kWh/day	\$1,090/year No discount conditions apply to this offer
2 to 3 people	MED 11.8 kWh/day	\$1,530/year No discount conditions apply to this offer
4+ people	HIGH 15.5 kWh/day	\$1,890/year No discount conditions apply to this offer

Features

- Direct debit payment required
- No pay on time discount
- Green power
- Fixed price contract
- No paper bills available

Estimated costs are inclusive of GST and are based on typical usage in your postcode, with regular usage on weekday afternoons and evenings. Your household's usage may vary. Costs exclude controlled load charges, solar payments, concessions and bonuses. A more personalised estimate can be found on the Victorian Energy Compare website at <https://compare.energy.vic.gov.au>. Retailers must provide clear advice to help customers find the offer that best suits their circumstances. Contact the retailer by calling **1800 462 668** and quote this Offer ID **POD189741MR**.

Offer details

Distributor	Citipower
Offer type	Market offer
Fuel type	Electricity
Customer type	Residential
Release date	01-07-2020
Expiry date	31-12-2020

Offer eligibility

Eligibility criteria may apply, contact Powershop for details.

Contract details

Contract term	No contract term
Cooling off period	10 business days
Eligibility criteria	Eligibility criteria may apply, contact Powershop for details.
Prices are fixed	
Contract expiry details	This Powershop offer is an ongoing contract (until you or we end it) with no exit fees. Your daily supply and usage charges are secured until 30 September 2021.
Full terms and conditions	Other fees and charges (incl. solar feed-in and GreenPower) may vary and are not secured. We'll let you know what your options are at the end of the benefit period in accordance with the regulatory requirements. We do not issue paper bills and require a credit card or bank details. For more information in relation to Powershop and this offer, see full terms and conditions at: www.powershop.com.au/terms-and-conditions

Fees

	(incl. GST)
Early termination fee	Flat rate: \$0.00
This Powershop offer has no exit fees	

Credit card payment processing fee	Flat rate: \$0.00
Powershop do not charge credit card fees.	

Disconnection fee	Flat rate: \$42.42
Disconnection fees may apply to manually de-energise a property. The fee will be passed on from your distributor and may vary.	

Disconnection fee	Flat rate: \$12.04
Disconnection fees may apply to remotely de-energise a property. The fee will be passed on from your distributor and may vary.	

Additional information

In addition to the applicable prices, you may incur other fees, including disconnection fees. Information regarding fees is set out on our fees page powershop.com.au/fees

Billing details

Bill frequency	1 month
Payment options	Direct debit

Offer rate and details

Local time

Electricity charges (All year)	Tariff (incl. GST)
---------------------------------------	---------------------------

Daily supply charge	109.80 c/day
----------------------------	--------------

Peak consumption – Mon - Fri, 3pm - 9pm	
All consumption	32.44c/kWh

Shoulder consumption – Mon - Fri, 7am - 3pm; Mon - Fri, 9pm - 10pm; Sat - Sun, 7am - 10pm	
All consumption	26.74c/kWh

Off-peak consumption – Everyday, 12am - 7am; Everyday, 10pm - 12am	
All consumption	20.61c/kWh

Daily supply charge: a charge that applies for supplying electricity to your premises for each day of the billing period, regardless of how much electricity is used.

kWh: a 'kWh' stands for kilowatt hour and is the unit of measurement for your electricity bill.

Solar feed-in tariff options

	Tariff
Current retailer feed-in tariff	10.20 c/kWh
Premium feed-in tariff	70.20 c/kWh

GreenPower options

When you choose to buy a GreenPower product from an energy retailer, the retailer then invests the additional charge in the renewable energy industry. These purchases are audited by a group of government agencies.

Option	Description	Price (incl. GST)
10% GreenPower	Your GreenPower preference can be set within your online account and changed at any time. No discount apply to GreenPower charges.	0.37 cents per kWh
100% GreenPower	Your GreenPower preference can be set within your online account and changed at any time. No discount apply to GreenPower charges.	3.74 cents per kWh

Option	Description	Price (incl. GST)
25% GreenPower	Your GreenPower preference can be set within your online account and changed at any time. No discount apply to GreenPower charges.	0.94 cents per kWh
50% GreenPower	Your GreenPower preference can be set within your online account and changed at any time. No discount apply to GreenPower charges.	1.87 cents per kWh

Climate zone 6: Mild temperate



Powershop Australia Pty Ltd

- No contract term
- Flexible Pricing with controlled load

- Call 1800 462 668
- www.powershop.com.au

Estimated electricity cost

1 person	LOW 7.2 kWh/day	\$1,090/year No discount conditions apply to this offer
2 to 3 people	MED 11.8 kWh/day	\$1,530/year No discount conditions apply to this offer
4+ people	HIGH 15.5 kWh/day	\$1,890/year No discount conditions apply to this offer

Features

- Direct debit payment required
- No pay on time discount
- Green power
- Fixed price contract
- No paper bills available

Estimated costs are inclusive of GST and are based on typical usage in your postcode, with regular usage on weekday afternoons and evenings. Your household's usage may vary. Costs exclude controlled load charges, solar payments, concessions and bonuses. A more personalised estimate can be found on the Victorian Energy Compare website at <https://compare.energy.vic.gov.au>. Retailers must provide clear advice to help customers find the offer that best suits their circumstances. Contact the retailer by calling **1800 462 668** and quote this Offer ID **POD189743MR**.

Offer details

Distributor	Citipower
Offer type	Market offer
Fuel type	Electricity
Customer type	Residential
Release date	01-07-2020
Expiry date	31-12-2020

Offer eligibility

Eligibility criteria may apply, contact Powershop for details.

Contract details

Contract term	No contract term
Cooling off period	10 business days
Eligibility criteria	Eligibility criteria may apply, contact Powershop for details.
Prices are fixed	
Contract expiry details	This Powershop offer is an ongoing contract (until you or we end it) with no exit fees. Your daily supply and usage charges are secured until 30 September 2021.
Full terms and conditions	Other fees and charges (incl. solar feed-in and GreenPower) may vary and are not secured. We'll let you know what your options are at the end of the benefit period in accordance with the regulatory requirements. We do not issue paper bills and require a credit card or bank details. For more information in relation to Powershop and this offer, see full terms and conditions at: www.powershop.com.au/terms-and-conditions

Fees

	(incl. GST)
Early termination fee	Flat rate: \$0.00
This Powershop offer has no exit fees	

Credit card payment processing fee Powershop do not charge credit card fees.	Flat rate: \$0.00
--	--------------------------

Disconnection fee Disconnection fees may apply to manually de-energise a property. The fee will be passed on from your distributor and may vary.	Flat rate: \$42.42
--	---------------------------

Disconnection fee Disconnection fees may apply to remotely de-energise a property. The fee will be passed on from your distributor and may vary.	Flat rate: \$12.04
--	---------------------------

Additional information

In addition to the applicable prices, you may incur other fees, including disconnection fees. Information regarding fees is set out on our fees page powershop.com.au/fees

Billing details

Bill frequency	1 month
Payment options	Direct debit

Offer rate and details

Local time

Electricity charges (All year)	Tariff (incl. GST)
---------------------------------------	---------------------------

Daily supply charge	109.80 c/day
----------------------------	--------------

Peak consumption – Mon - Fri, 3pm - 9pm

All consumption	32.44c/kWh
-----------------	------------

Shoulder consumption – Mon - Fri, 7am - 3pm; Mon - Fri, 9pm - 10pm; Sat - Sun, 7am - 10pm

All consumption	26.74c/kWh
-----------------	------------

Off-peak consumption – Everyday, 12am - 7am; Everyday, 10pm - 12am

All consumption	20.61c/kWh
-----------------	------------

Controlled load charges	Tariff (incl. GST)
--------------------------------	---------------------------

Controlled load consumption	19.24 c/kWh
------------------------------------	-------------

Daily supply charge: a charge that applies for supplying electricity to your premises for each day of the billing period, regardless of how much electricity is used.

kWh: a 'kWh' stands for kilowatt hour and is the unit of measurement for your electricity bill.

Solar feed-in tariff options

	Tariff
Current retailer feed-in tariff	10.20 c/kWh
Premium feed-in tariff	70.20 c/kWh

GreenPower options

When you choose to buy a GreenPower product from an energy retailer, the retailer then invests the additional charge in the renewable energy industry. These purchases are audited by a group of government agencies.

Option	Description	Price (incl. GST)
10% GreenPower	Your GreenPower preference can be set within your online account and changed at any time. No discount apply to GreenPower charges.	0.37 cents per kWh

Option	Description	Price (incl. GST)
100% GreenPower	Your GreenPower preference can be set within your online account and changed at any time. No discount apply to GreenPower charges.	3.74 cents per kWh
25% GreenPower	Your GreenPower preference can be set within your online account and changed at any time. No discount apply to GreenPower charges.	0.94 cents per kWh
50% GreenPower	Your GreenPower preference can be set within your online account and changed at any time. No discount apply to GreenPower charges.	1.87 cents per kWh

Climate zone 6: Mild temperate