

Victorian Energy Fact Sheet

When you're signing up to something new, it's important to know what's what. Here's some essential info about Powershop and this offer.



GAS

OFFER **POWERSHOP**LITEDISTRIBUTOR **MULTINET**ZONE **METRO**

About Powershop

We sell gas to homes and businesses in Victoria. We work hard to provide better prices, a fairer deal for all our customers, and a better future for the planet.



Get energy insights and stay in control of your energy use

OVER **200,000**
app downloads



Get the best service from our award winning Customer Team

93% average
customer
satisfaction rating

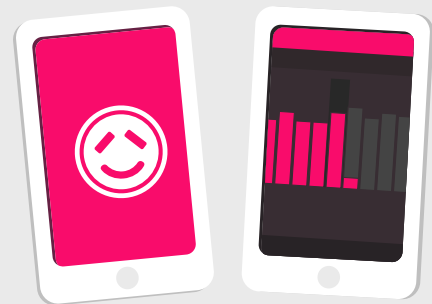


Get 100% carbon offset energy at no extra cost to you

OVER **1.8 Million**
tonnes of carbon offset
thanks to Powershop customers

About this offer

This is a simple set and forget offer with no discounts, just a great rate. You get access to the Powershop app to manage your bills and energy usage.



Need Help?

Visit our help centre:
powershop.com.au/help

Call us on:
1800 462 668


The following pages have been created by the Victorian Energy Compare Government website.

Get in touch if you're not sure how to read the info on the following pages. We can help you understand which rates and tariff applies to you.

You can also visit
powershop.com.au/vic-energy-fact-sheets



Powershop Australia Pty Ltd

 1 Year

 Call 1800 462 668

 www.powershop.com.au





Estimated Gas costs

We are unable to provide an estimate for this offer.

Please contact **Powershop Australia Pty Ltd** on **1800 462 668** for pricing details.



Features

-  Direct debit payment required
-  No pay on time discount
-  Fixed price contract
-  No paper bills available

Estimated prices are based on typical usage in your postcode, with regular usage on weekday afternoons and evenings. Your household's usage may vary. Prices exclude concessions and bonuses.

A more personalised estimate can be found on the Victorian Energy Compare website at <https://compare.energy.vic.gov.au>.

Retailers must provide clear advice to help customers find the offer that best suits their circumstances.

Contact the retailer by calling **1800 462 668** and quote this Offer ID **POD161186MS**.

Offer details

Distributor	Multinet
Offer type	Market offer
Fuel type	Gas
Customer type	Small business
Release date	01-02-2020
Expiry date	31-12-2020

Offer eligibility

This product and document is only applicable to Victorian customers in the Multinet Metro distribution area. Other eligibility criteria may apply, contact Powershop for details. The PowershopLITE Offer fixes your rates under... more details below

Contract details

Contract term	1 Year
Cooling off period	10 business days
Eligibility criteria	This product and document is only applicable to Victorian customers in the Multinet Metro distribution area. Other eligibility criteria may apply, contact Powershop for details. The PowershopLITE Offer fixes your rates under your tariff for a period of 12 months
Prices are fixed	
Contract expiry details	Your rates are secured for 12 months under your current tariff as of the date you agree to terms. We will notify you at the end of the offer period as per the current regulations
Full terms and conditions	Powershop offer bi-monthly bills and do not issue paper bills. We require a credit card or bank details. For further information in relation to Powershop and this offer - see our full terms and conditions at: powershop.com.au/prices/

Fees

Other fee	(incl. GST) Flat rate: \$0.00
In addition to the applicable prices, you may incur other fees, including disconnection fees. Information regarding fees is set out on our fees page powershop.com.au/fees	

Disconnection fee**Flat rate: \$6.79**

Disconnection fees may apply to manually de-energise a property. The fee will be passed on from your distributor and may vary.

Additional information

Additional fees may apply. For more information, please visit the retailers website at www.powershop.com.au.

Billing details

Bill frequency	2 months
Payment options	Direct debit

Offer rate and details

Season 1 gas charges - Peak (01-Sep - 31-Oct)	Tariff (incl. GST)
Daily supply charge	96.58 c/day
Consumption	
All consumption	1.82c/MJ
Season 2 gas charges - Off Peak (01-Nov - 30-Apr)	Tariff (incl. GST)
Daily supply charge	96.58 c/day
Consumption	
All consumption	1.82c/MJ
Season 3 gas charges - Peak (01-May - 31-Aug)	Tariff (incl. GST)
Daily supply charge	96.58 c/day
Consumption	
All consumption	1.82c/MJ

Daily supply charge: a charge that applies for supplying gas to your premises for each day of the billing period, regardless of how much gas is used.

MJ: a 'MJ' stands for megajoule and is the unit of measurement for your gas bill.

This gas offer is only available if you have reticulated gas supply at your premises.