

Victorian Energy Fact Sheet

When you're signing up to something new, it's important to know what's what. Here's some essential info about Powershop and this offer.



ELECTRICITY

OFFER **POWERSHOPLITE**

DISTRIBUTOR **UNITED ENERGY**

About Powershop

We sell energy to homes and businesses in Victoria, NSW, South East QLD and South Australia. We work hard to provide better prices, a fairer deal for all our customers, and a better future for the planet.



Get energy insights and stay in control of your energy use

OVER 200,000
app downloads



Get the best service from our award winning Customer Team

93% average
customer
satisfaction rating

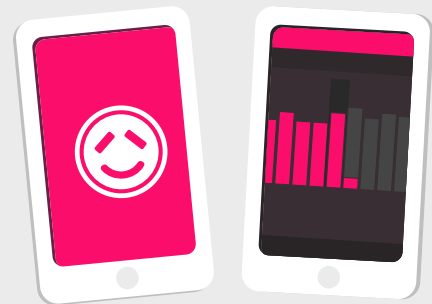


Get 100% carbon offset energy at no extra cost to you

OVER 1.8 Million
tonnes of carbon offset
thanks to Powershop customers

About this offer

This is a simple set and forget offer with no discounts, just a great rate. You get access to the Powershop app to manage your bills and energy usage.



Need Help?

Visit our help centre:
powershop.com.au/help

Call us on:
1800 462 668

The following pages have been created by the Victorian Energy Compare Government website.

Get in touch if you're not sure how to read the info on the following pages. We can help you understand which rates, tariff and climate zone applies to you.

You can also visit
powershop.com.au/vic-energy-fact-sheets



Powershop Australia Pty Ltd

- No contract term
- Single rate

- Call 1800 462 668
- www.powershop.com.au

Estimated electricity cost

1 person	LOW 7.2 kWh/day	\$1,030/year No discount conditions apply to this offer
2 to 3 people	MED 11.8 kWh/day	\$1,480/year No discount conditions apply to this offer
4+ people	HIGH 15.5 kWh/day	\$1,840/year No discount conditions apply to this offer

Features

- Direct debit payment required
- No pay on time discount
- Green Power options
- No fixed price contract
- No paper bills available

Estimated costs are inclusive of GST and are based on typical usage in your postcode, with regular usage on weekday afternoons and evenings. Your household's usage may vary. Costs exclude controlled load charges, solar payments, concessions and bonuses. A more personalised estimate can be found on the Victorian Energy Compare website at <https://compare.energy.vic.gov.au>. Retailers must provide clear advice to help customers find the offer that best suits their circumstances. Contact the retailer by calling **1800 462 668** and quote this Offer ID **POD135379MR**.

Offer details

Distributor	United Energy
Offer type	Market offer
Fuel type	Electricity
Customer type	Residential
Release date	01-01-2020
Expiry date	31-12-2020

Offer eligibility

This product and document is only applicable to Victorian customers in the United Energy distribution area. Other eligibility criteria may apply, contact Powershop for details.

Contract details

Contract term	No contract term
Cooling off period	10 business days
Eligibility criteria	This product and document is only applicable to Victorian customers in the United Energy distribution area. Other eligibility criteria may apply, contact Powershop for details.
Prices are not fixed	We may update your tariff from time to time to reflect market changes and economic conditions. We'll always notify you of any tariff change - this will usually be by email, and by no later than the date of your next bill to be impacted by the variation.
Contract expiry details	This Powershop offer has no contract term or exit fees
Full terms and conditions	We do not issue paper bills and require a credit card or bank details. For more information in relation to Powershop and this offer, see full terms and conditions at: www.powershop.com.au/prices

Fees

Early termination fee	(incl. GST) Flat rate: \$0.00
This Powershop offer has no exit fees	
Credit card payment processing fee	Flat rate: \$0.00

Powershop do not charge credit card fees.

Disconnection fee **Flat rate: \$54.52**

Disconnection fees may apply to manually de-energise a property. The fee will be passed on from your distributor and may vary.

Disconnection fee **Flat rate: \$12.28**

Disconnection fees may apply to remotely de-energise a property. The fee will be passed on from your distributor and may vary.

Additional information

In addition to the applicable prices, you may incur other fees, including disconnection fees. Information regarding fees is set out on our fees page powershop.com.au/fees

Billing details

Bill frequency 1 month
Payment options Direct debit

Offer rate and details

Local time

Electricity charges (All year) **Tariff (incl. GST)**

Daily supply charge 91.72 c/day

Peak consumption

All consumption 26.62c/kWh

Daily supply charge: a charge that applies for supplying electricity to your premises for each day of the billing period, regardless of how much electricity is used.

kWh: a 'kWh' stands for kilowatt hour and is the unit of measurement for your electricity bill.

Solar feed-in tariff options

	Tariff
Current retailer feed-in tariff	12.00 c/kWh
Premium feed-in tariff	72.00 c/kWh

GreenPower options

When you choose to buy a GreenPower product from an energy retailer, the retailer then invests the additional charge in the renewable energy industry. These purchases are audited by a group of government agencies.

Option	Description	Price (incl. GST)
100% GreenPower	Your GreenPower preference can be set within your online account and changed at any time. No discount apply to GreenPower charges.	5.50 cents per kWh
50% GreenPower	Your GreenPower preference can be set within your online account and changed at any time. No discount apply to GreenPower charges.	2.75 cents per kWh
25% GreenPower	Your GreenPower preference can be set within your online account and changed at any time. No discount apply to GreenPower charges.	1.38 cents per kWh
10% GreenPower	Your GreenPower preference can be set within your online account and changed at any time. No discount apply to GreenPower charges.	0.55 cents per kWh

Climate zone 6: Mild temperate



Powershop Australia Pty Ltd

- No contract term
- Two rate: single rate with controlled load

- Call 1800 462 668
- www.powershop.com.au

Estimated electricity cost

1 person	LOW 7.2 kWh/day	\$1,030/year No discount conditions apply to this offer
2 to 3 people	MED 11.8 kWh/day	\$1,480/year No discount conditions apply to this offer
4+ people	HIGH 15.5 kWh/day	\$1,840/year No discount conditions apply to this offer

Features

- Direct debit payment required
- No pay on time discount
- Green Power options
- No fixed price contract
- No paper bills available

Estimated costs are inclusive of GST and are based on typical usage in your postcode, with regular usage on weekday afternoons and evenings. Your household's usage may vary. Costs exclude controlled load charges, solar payments, concessions and bonuses. A more personalised estimate can be found on the Victorian Energy Compare website at <https://compare.energy.vic.gov.au>. Retailers must provide clear advice to help customers find the offer that best suits their circumstances. Contact the retailer by calling **1800 462 668** and quote this Offer ID **POD135380MR**.

Offer details

Distributor	United Energy
Offer type	Market offer
Fuel type	Electricity
Customer type	Residential
Release date	01-01-2020
Expiry date	31-12-2020

Offer eligibility

This product and document is only applicable to Victorian customers in the United Energy distribution area. Other eligibility criteria may apply, contact Powershop for details.

Contract details

Contract term	No contract term
Cooling off period	10 business days
Eligibility criteria	This product and document is only applicable to Victorian customers in the United Energy distribution area. Other eligibility criteria may apply, contact Powershop for details.
Prices are not fixed	We may update your tariff from time to time to reflect market changes and economic conditions. We'll always notify you of any tariff change - this will usually be by email, and by no later than the date of your next bill to be impacted by the variation.
Contract expiry details	This Powershop offer has no contract term or exit fees
Full terms and conditions	We do not issue paper bills and require a credit card or bank details. For more information in relation to Powershop and this offer, see full terms and conditions at: www.powershop.com.au/prices

Fees

Early termination fee	(incl. GST) Flat rate: \$0.00
This Powershop offer has no exit fees	
Credit card payment processing fee	Flat rate: \$0.00

Powershop do not charge credit card fees.

Disconnection fee**Flat rate: \$54.52**

Disconnection fees may apply to manually de-energise a property. The fee will be passed on from your distributor and may vary.

Disconnection fee**Flat rate: \$12.28**

Disconnection fees may apply to remotely de-energise a property. The fee will be passed on from your distributor and may vary.

Additional information

In addition to the applicable prices, you may incur other fees, including disconnection fees. Information regarding fees is set out on our fees page powershop.com.au/fees

Billing details

Bill frequency	1 month
Payment options	Direct debit

Offer rate and details

Local time

Electricity charges (All year)**Tariff (incl. GST)**

Daily supply charge	91.72 c/day
----------------------------	-------------

Peak consumption

All consumption	26.62c/kWh
-----------------	------------

Controlled load charges**Tariff (incl. GST)**

Controlled load consumption	19.47 c/kWh
------------------------------------	-------------

Daily supply charge: a charge that applies for supplying electricity to your premises for each day of the billing period, regardless of how much electricity is used.

kWh: a 'kWh' stands for kilowatt hour and is the unit of measurement for your electricity bill.

Solar feed-in tariff options

	Tariff
Current retailer feed-in tariff	12.00 c/kWh
Premium feed-in tariff	72.00 c/kWh

GreenPower options

When you choose to buy a GreenPower product from an energy retailer, the retailer then invests the additional charge in the renewable energy industry. These purchases are audited by a group of government agencies.



Option	Description	Price (incl. GST)
100% GreenPower	Your GreenPower preference can be set within your online account and changed at any time. No discount apply to GreenPower charges.	5.50 cents per kWh
50% GreenPower	Your GreenPower preference can be set within your online account and changed at any time. No discount apply to GreenPower charges.	2.75 cents per kWh
25% GreenPower	Your GreenPower preference can be set within your online account and changed at any time. No discount apply to GreenPower charges.	1.38 cents per kWh

Option	Description	Price (incl. GST)
10% GreenPower	Your GreenPower preference can be set within your online account and changed at any time. No discount apply to GreenPower charges.	0.55 cents per kWh

Climate zone 6: Mild temperate



Powershop Australia Pty Ltd

-  No contract term
-  Single rate

-  Call 1800 462 668
-  www.powershop.com.au

Estimated Electricity costs






This plan includes demand charges.

We are unable to provide an estimate for this offer.

Please contact **Powershop Australia Pty Ltd** on **1800 462 668** for pricing details.



Features

-  Direct debit payment required
-  No pay on time discount
-  Green Power options
-  No fixed price contract
-  No paper bills available

Estimated costs are based on typical usage in your postcode, with regular usage on weekday afternoons and evenings. Your household's usage may vary. Costs exclude controlled load charges, solar payments, concessions and bonuses.

A more personalised estimate can be found on the Victorian Energy Compare website at <https://compare.energy.vic.gov.au>.

Retailers must provide clear advice to help customers find the offer that best suits their circumstances.

Contact the retailer by calling **1800 462 668** and quote this Offer ID **POD135381MR**.

Offer details

Distributor	United Energy
Offer type	Market offer
Fuel type	Electricity
Customer type	Residential
Release date	01-01-2020
Expiry date	31-12-2020

Offer eligibility

This product and document is only applicable to Victorian customers in the United Energy distribution area. Other eligibility criteria may apply, contact Powershop for details.

Contract details

Contract term	No contract term
Cooling off period	10 business days
Eligibility criteria	This product and document is only applicable to Victorian customers in the United Energy distribution area. Other eligibility criteria may apply, contact Powershop for details.
Prices are not fixed	We may update your tariff from time to time to reflect market changes and economic conditions. We'll always notify you of any tariff change - this will usually be by email, and by no later than the date of your next bill to be impacted by the variation.
Contract expiry details	This Powershop offer has no contract term or exit fees
Full terms and conditions	We do not issue paper bills and require a credit card or bank details. For more information in relation to Powershop and this offer, see full terms and conditions at: www.powershop.com.au/prices

Fees

Early termination fee	(incl. GST) Flat rate: \$0.00
This Powershop offer has no exit fees	
Credit card payment processing fee	Flat rate: \$0.00

Powershop do not charge credit card fees.

Disconnection fee	Flat rate: \$54.52
--------------------------	---------------------------

Disconnection fee	Flat rate: \$12.28
--------------------------	---------------------------

Additional information

In addition to the applicable prices, you may incur other fees, including disconnection fees. Information regarding fees is set out on our fees page powershop.com.au/fees

Billing details

Bill frequency	1 month
Payment options	Direct debit

Offer rate and details

Local time

Season 1 electricity charges - Non-Summer (01-Jul - 30-Nov)	Tariff (incl. GST)
--	---------------------------

Daily supply charge	83.96 c/day
----------------------------	-------------

Peak consumption

All consumption	20.69c/kWh
-----------------	------------

Demand charge – Mon - Fri, 3pm - 9pm	17.09 cents per kW per Day
---	----------------------------

Non-Summer Demand Charge

Demand calculation is based on the maximum measured interval consumption occurring between 3pm - 9pm Mon - Fri.

Applies per Month on the maximum kW demand for all usage. Minimum charges based on demand of 1.5 kW.

Season 2 electricity charges - Summer (01-Dec - 31-Mar)	Tariff (incl. GST)
--	---------------------------

Daily supply charge	83.96 c/day
----------------------------	-------------

Peak consumption

All consumption	20.69c/kWh
-----------------	------------

Demand charge – Mon - Fri, 3pm - 9pm	39.12 cents per kW per Day
---	----------------------------

Summer Demand Charge

Demand calculation is based on the maximum measured interval consumption occurring between 3pm - 9pm Mon - Fri.

Applies per Month on the maximum kW demand for all usage. Minimum charges based on demand of 1.5 kW.

Season 3 electricity charges - Non-Summer (01-Apr - 30-Jun)	Tariff (incl. GST)
--	---------------------------

Daily supply charge	83.96 c/day
----------------------------	-------------

Peak consumption

All consumption	20.69c/kWh
-----------------	------------

Demand charge – Mon - Fri, 3pm - 9pm	17.09 cents per kW per Day
---	----------------------------

Non-Summer Demand Charge

Demand calculation is based on the maximum measured interval consumption occurring between 3pm - 9pm Mon - Fri.

Applies per Month on the maximum kW demand for all usage. Minimum charges based on demand of 1.5 kW.

Daily supply charge: a charge that applies for supplying electricity to your premises for each day of the billing period, regardless of how much electricity is used.

kWh: a 'kWh' stands for kilowatt hour and is the unit of measurement for your electricity bill.

Solar feed-in tariff options

	Tariff
Current retailer feed-in tariff	12.00 c/kWh
Premium feed-in tariff	72.00 c/kWh

GreenPower options

When you choose to buy a GreenPower product from an energy retailer, the retailer then invests the additional charge in the renewable energy industry. These purchases are audited by a group of government agencies.

Option	Description	Price (incl. GST)
100% GreenPower	Your GreenPower preference can be set within your online account and changed at any time. No discount apply to GreenPower charges.	5.50 cents per kWh
50% GreenPower	Your GreenPower preference can be set within your online account and changed at any time. No discount apply to GreenPower charges.	2.75 cents per kWh
25% GreenPower	Your GreenPower preference can be set within your online account and changed at any time. No discount apply to GreenPower charges.	1.38 cents per kWh
10% GreenPower	Your GreenPower preference can be set within your online account and changed at any time. No discount apply to GreenPower charges.	0.55 cents per kWh



Powershop Australia Pty Ltd

- No contract term
- Time of use

- Call 1800 462 668
- www.powershop.com.au

Estimated electricity cost

1 person	LOW 7.2 kWh/day	\$1,010/year No discount conditions apply to this offer
2 to 3 people	MED 11.8 kWh/day	\$1,440/year No discount conditions apply to this offer
4+ people	HIGH 15.5 kWh/day	\$1,790/year No discount conditions apply to this offer

Features

- Direct debit payment required
- No pay on time discount
- Green Power options
- No fixed price contract
- No paper bills available

Estimated costs are inclusive of GST and are based on typical usage in your postcode, with regular usage on weekday afternoons and evenings. Your household's usage may vary. Costs exclude controlled load charges, solar payments, concessions and bonuses. A more personalised estimate can be found on the Victorian Energy Compare website at <https://compare.energy.vic.gov.au>. Retailers must provide clear advice to help customers find the offer that best suits their circumstances. Contact the retailer by calling **1800 462 668** and quote this Offer ID **POD135398MR**.

Offer details

Distributor	United Energy
Offer type	Market offer
Fuel type	Electricity
Customer type	Residential
Release date	01-01-2020
Expiry date	31-12-2020

Offer eligibility

This product and document is only applicable to Victorian customers in the United Energy distribution area. Other eligibility criteria may apply, contact Powershop for details.

Contract details

Contract term	No contract term
Cooling off period	10 business days
Eligibility criteria	This product and document is only applicable to Victorian customers in the United Energy distribution area. Other eligibility criteria may apply, contact Powershop for details.
Prices are not fixed	We may update your tariff from time to time to reflect market changes and economic conditions. We'll always notify you of any tariff change - this will usually be by email, and by no later than the date of your next bill to be impacted by the variation.
Contract expiry details	This Powershop offer has no contract term or exit fees
Full terms and conditions	We do not issue paper bills and require a credit card or bank details. For more information in relation to Powershop and this offer, see full terms and conditions at: www.powershop.com.au/prices

Fees

Early termination fee	(incl. GST) Flat rate: \$0.00
This Powershop offer has no exit fees	
Credit card payment processing fee	Flat rate: \$0.00

Powershop do not charge credit card fees.

Disconnection fee **Flat rate: \$54.52**

Disconnection fees may apply to manually de-energise a property. The fee will be passed on from your distributor and may vary.

Disconnection fee **Flat rate: \$12.28**

Disconnection fees may apply to remotely de-energise a property. The fee will be passed on from your distributor and may vary.

Additional information

In addition to the applicable prices, you may incur other fees, including disconnection fees. Information regarding fees is set out on our fees page powershop.com.au/fees

Billing details

Bill frequency 1 month
Payment options Direct debit

Offer rate and details

Local time

Electricity charges (All year) **Tariff (incl. GST)**

Daily supply charge 95.77 c/day

Peak consumption – Mon - Fri, 7am - 11pm

All consumption 31.13c/kWh

Off-peak consumption – Mon - Fri, 11pm - 12am; Mon - Fri, 12am - 7am; Sat - Sun, all day

All consumption 19.02c/kWh

Daily supply charge: a charge that applies for supplying electricity to your premises for each day of the billing period, regardless of how much electricity is used.

kWh: a 'kWh' stands for kilowatt hour and is the unit of measurement for your electricity bill.

Solar feed-in tariff options

	Tariff
Current retailer feed-in tariff	12.00 c/kWh
Premium feed-in tariff	72.00 c/kWh

GreenPower options

When you choose to buy a GreenPower product from an energy retailer, the retailer then invests the additional charge in the renewable energy industry. These purchases are audited by a group of government agencies.

Option	Description	Price (incl. GST)
100% GreenPower	Your GreenPower preference can be set within your online account and changed at any time. No discount apply to GreenPower charges.	5.50 cents per kWh
50% GreenPower	Your GreenPower preference can be set within your online account and changed at any time. No discount apply to GreenPower charges.	2.75 cents per kWh
25% GreenPower	Your GreenPower preference can be set within your online account and changed at any time. No discount apply to GreenPower charges.	1.38 cents per kWh
10% GreenPower	Your GreenPower preference can be set within your online account and changed at any time. No discount apply to GreenPower charges.	0.55 cents per kWh



Powershop Australia Pty Ltd

- No contract term
- Time of use with controlled load

- Call 1800 462 668
- www.powershop.com.au

Estimated electricity cost

1 person	LOW 7.2 kWh/day	\$1,010/year No discount conditions apply to this offer
2 to 3 people	MED 11.8 kWh/day	\$1,440/year No discount conditions apply to this offer
4+ people	HIGH 15.5 kWh/day	\$1,790/year No discount conditions apply to this offer

Features

- Direct debit payment required
- No pay on time discount
- Green Power options
- No fixed price contract
- No paper bills available

Estimated costs are inclusive of GST and are based on typical usage in your postcode, with regular usage on weekday afternoons and evenings. Your household's usage may vary. Costs exclude controlled load charges, solar payments, concessions and bonuses. A more personalised estimate can be found on the Victorian Energy Compare website at <https://compare.energy.vic.gov.au>. Retailers must provide clear advice to help customers find the offer that best suits their circumstances. Contact the retailer by calling **1800 462 668** and quote this Offer ID **POD135402MR**.

Offer details

Distributor	United Energy
Offer type	Market offer
Fuel type	Electricity
Customer type	Residential
Release date	01-01-2020
Expiry date	31-12-2020

Offer eligibility

This product and document is only applicable to Victorian customers in the United Energy distribution area. Other eligibility criteria may apply, contact Powershop for details.

Contract details

Contract term	No contract term
Cooling off period	10 business days
Eligibility criteria	This product and document is only applicable to Victorian customers in the United Energy distribution area. Other eligibility criteria may apply, contact Powershop for details.
Prices are not fixed	We may update your tariff from time to time to reflect market changes and economic conditions. We'll always notify you of any tariff change - this will usually be by email, and by no later than the date of your next bill to be impacted by the variation.
Contract expiry details	This Powershop offer has no contract term or exit fees
Full terms and conditions	We do not issue paper bills and require a credit card or bank details. For more information in relation to Powershop and this offer, see full terms and conditions at: www.powershop.com.au/prices

Fees

Early termination fee	(incl. GST) Flat rate: \$0.00
This Powershop offer has no exit fees.	
Credit card payment processing fee	Flat rate: \$0.00

Powershop do not charge credit card fees.

Disconnection fee **Flat rate: \$54.52**

Disconnection fees may apply to manually de-energise a property. The fee will be passed on from your distributor and may vary.

Disconnection fee **Flat rate: \$12.28**

Disconnection fees may apply to remotely de-energise a property. The fee will be passed on from your distributor and may vary.

Additional information

In addition to the applicable prices, you may incur other fees, including disconnection fees. Information regarding fees is set out on our fees page powershop.com.au/fees

Billing details

Bill frequency 1 month
Payment options Direct debit

Offer rate and details

Local time

Electricity charges (All year) **Tariff (incl. GST)**

Daily supply charge 95.77 c/day

Peak consumption – Mon - Fri, 7am - 11pm

All consumption 31.13c/kWh

Off-peak consumption – Mon - Fri, 11pm - 12am; Mon - Fri, 12am - 7am; Sat - Sun, all day

All consumption 19.02c/kWh

Controlled load charges **Tariff (incl. GST)**

Controlled load consumption 19.47 c/kWh

Daily supply charge: a charge that applies for supplying electricity to your premises for each day of the billing period, regardless of how much electricity is used.

kWh: a 'kWh' stands for kilowatt hour and is the unit of measurement for your electricity bill.

Solar feed-in tariff options

	Tariff
Current retailer feed-in tariff	12.00 c/kWh
Premium feed-in tariff	72.00 c/kWh

GreenPower options

When you choose to buy a GreenPower product from an energy retailer, the retailer then invests the additional charge in the renewable energy industry. These purchases are audited by a group of government agencies.

Option	Description	Price (incl. GST)
100% GreenPower	Your GreenPower preference can be set within your online account and changed at any time. No discount apply to GreenPower charges.	5.50 cents per kWh
50% GreenPower	Your GreenPower preference can be set within your online account and changed at any time. No discount apply to GreenPower charges.	2.75 cents per kWh
25% GreenPower	Your GreenPower preference can be set within your online account and changed at any time. No discount apply to GreenPower charges.	1.38 cents per kWh

Option	Description	Price (incl. GST)
10% GreenPower	Your GreenPower preference can be set within your online account and changed at any time. No discount apply to GreenPower charges.	0.55 cents per kWh

Climate zone 6: Mild temperate



Powershop Australia Pty Ltd

- No contract term
- Flexible Pricing

- Call 1800 462 668
- www.powershop.com.au

Estimated electricity cost

1 person	LOW 7.2 kWh/day	\$1,030/year No discount conditions apply to this offer
2 to 3 people	MED 11.8 kWh/day	\$1,470/year No discount conditions apply to this offer
4+ people	HIGH 15.5 kWh/day	\$1,830/year No discount conditions apply to this offer

Features

- Direct debit payment required
- No pay on time discount
- Green Power options
- No fixed price contract
- No paper bills available

Estimated costs are inclusive of GST and are based on typical usage in your postcode, with regular usage on weekday afternoons and evenings. Your household's usage may vary. Costs exclude controlled load charges, solar payments, concessions and bonuses. A more personalised estimate can be found on the Victorian Energy Compare website at <https://compare.energy.vic.gov.au>. Retailers must provide clear advice to help customers find the offer that best suits their circumstances. Contact the retailer by calling **1800 462 668** and quote this Offer ID **POD135399MR**.

Offer details

Distributor	United Energy
Offer type	Market offer
Fuel type	Electricity
Customer type	Residential
Release date	01-01-2020
Expiry date	31-12-2020

Offer eligibility

This product and document is only applicable to Victorian customers in the United Energy distribution area. Other eligibility criteria may apply, contact Powershop for details.

Contract details

Contract term	No contract term
Cooling off period	10 business days
Eligibility criteria	This product and document is only applicable to Victorian customers in the United Energy distribution area. Other eligibility criteria may apply, contact Powershop for details.
Prices are not fixed	We may update your tariff from time to time to reflect market changes and economic conditions. We'll always notify you of any tariff change - this will usually be by email, and by no later than the date of your next bill to be impacted by the variation.
Contract expiry details	This Powershop offer has no contract term or exit fees
Full terms and conditions	We do not issue paper bills and require a credit card or bank details. For more information in relation to Powershop and this offer, see full terms and conditions at: www.powershop.com.au/prices

Fees

Early termination fee	(incl. GST) Flat rate: \$0.00
This Powershop offer has no exit fees	
Credit card payment processing fee	Flat rate: \$0.00

Powershop do not charge credit card fees.

Disconnection fee**Flat rate: \$54.52**

Disconnection fees may apply to manually de-energise a property. The fee will be passed on from your distributor and may vary.

Disconnection fee**Flat rate: \$12.28**

Disconnection fees may apply to remotely de-energise a property. The fee will be passed on from your distributor and may vary.

Additional information

In addition to the applicable prices, you may incur other fees, including disconnection fees. Information regarding fees is set out on our fees page powershop.com.au/fees

Billing details

Bill frequency	1 month
Payment options	Direct debit

Offer rate and details**Local time****Electricity charges (All year)****Tariff (incl. GST)**

Daily supply charge	91.72 c/day
----------------------------	-------------

Peak consumption – Mon - Fri, 3pm - 9pm

All consumption	35.81c/kWh
-----------------	------------

Shoulder consumption – Mon - Fri, 7am - 3pm; Mon - Fri, 9pm - 10pm; Sat - Sun, 7am - 10pm

All consumption	24.31c/kWh
-----------------	------------

Off-peak consumption – Everyday, 12am - 7am; Everyday, 10pm - 12am

All consumption	21.69c/kWh
-----------------	------------

Daily supply charge: a charge that applies for supplying electricity to your premises for each day of the billing period, regardless of how much electricity is used.

kWh: a 'kWh' stands for kilowatt hour and is the unit of measurement for your electricity bill.

Solar feed-in tariff options

	Tariff
Current retailer feed-in tariff	12.00 c/kWh
Premium feed-in tariff	72.00 c/kWh

GreenPower options

When you choose to buy a GreenPower product from an energy retailer, the retailer then invests the additional charge in the renewable energy industry. These purchases are audited by a group of government agencies.

Option	Description	Price (incl. GST)
100% GreenPower	Your GreenPower preference can be set within your online account and changed at any time. No discount apply to GreenPower charges.	5.50 cents per kWh
50% GreenPower	Your GreenPower preference can be set within your online account and changed at any time. No discount apply to GreenPower charges.	2.75 cents per kWh

Option	Description	Price (incl. GST)
25% GreenPower	Your GreenPower preference can be set within your online account and changed at any time. No discount apply to GreenPower charges.	1.38 cents per kWh
10% GreenPower	Your GreenPower preference can be set within your online account and changed at any time. No discount apply to GreenPower charges.	0.55 cents per kWh

Climate zone 6: Mild temperate



Powershop Australia Pty Ltd

- No contract term
- Flexible Pricing

- Call 1800 462 668
- www.powershop.com.au

Estimated electricity cost

1 person	LOW 7.2 kWh/day	\$1,040/year No discount conditions apply to this offer
2 to 3 people	MED 11.8 kWh/day	\$1,490/year No discount conditions apply to this offer
4+ people	HIGH 15.5 kWh/day	\$1,850/year No discount conditions apply to this offer

Features

- Direct debit payment required
- No pay on time discount
- Green Power options
- No fixed price contract
- No paper bills available

Estimated costs are inclusive of GST and are based on typical usage in your postcode, with regular usage on weekday afternoons and evenings. Your household's usage may vary. Costs exclude controlled load charges, solar payments, concessions and bonuses. A more personalised estimate can be found on the Victorian Energy Compare website at <https://compare.energy.vic.gov.au>. Retailers must provide clear advice to help customers find the offer that best suits their circumstances. Contact the retailer by calling **1800 462 668** and quote this Offer ID **POD135400MR**.

Offer details

Distributor	United Energy
Offer type	Market offer
Fuel type	Electricity
Customer type	Residential
Release date	01-01-2020
Expiry date	31-12-2020

Offer eligibility

This product and document is only applicable to Victorian customers in the United Energy distribution area. Other eligibility criteria may apply, contact Powershop for details.

Contract details

Contract term	No contract term
Cooling off period	10 business days
Eligibility criteria	This product and document is only applicable to Victorian customers in the United Energy distribution area. Other eligibility criteria may apply, contact Powershop for details.
Prices are not fixed	We may update your tariff from time to time to reflect market changes and economic conditions. We'll always notify you of any tariff change - this will usually be by email, and by no later than the date of your next bill to be impacted by the variation.
Contract expiry details	This Powershop offer has no contract term or exit fees
Full terms and conditions	We do not issue paper bills and require a credit card or bank details. For more information in relation to Powershop and this offer, see full terms and conditions at: www.powershop.com.au/prices

Fees

Early termination fee	(incl. GST) Flat rate: \$0.00
This Powershop offer has no exit fees.	
Credit card payment processing fee	Flat rate: \$0.00

Powershop do not charge credit card fees.

Disconnection fee

Flat rate: \$54.52

Disconnection fees may apply to manually de-energise a property. The fee will be passed on from your distributor and may vary.

Disconnection fee

Flat rate: \$12.28

Disconnection fees may apply to remotely de-energise a property. The fee will be passed on from your distributor and may vary.

Additional information

In addition to the applicable prices, you may incur other fees, including disconnection fees. Information regarding fees is set out on our fees page powershop.com.au/fees

Billing details

Bill frequency 1 month
Payment options Direct debit

Offer rate and details

Local time

Electricity charges (All year)

Tariff (incl. GST)

Daily supply charge	91.72 c/day
Peak consumption – Mon - Fri, 3pm - 9pm All consumption	37.49c/kWh
Shoulder consumption – Mon - Fri, 7am - 3pm All consumption	26.97c/kWh
Off-peak consumption – Mon - Fri, 12am - 7am; Mon - Fri, 9pm - 12am; Sat - Sun, all day All consumption	21.86c/kWh

Daily supply charge: a charge that applies for supplying electricity to your premises for each day of the billing period, regardless of how much electricity is used.

kWh: a 'kWh' stands for kilowatt hour and is the unit of measurement for your electricity bill.

Solar feed-in tariff options

	Tariff
Current retailer feed-in tariff	12.00 c/kWh
Premium feed-in tariff	72.00 c/kWh

GreenPower options

When you choose to buy a GreenPower product from an energy retailer, the retailer then invests the additional charge in the renewable energy industry. These purchases are audited by a group of government agencies.

Option	Description	Price (incl. GST)
100% GreenPower	Your GreenPower preference can be set within your online account and changed at any time. No discount apply to GreenPower charges.	5.50 cents per kWh
50% GreenPower	Your GreenPower preference can be set within your online account and changed at any time. No discount apply to GreenPower charges.	2.75 cents per kWh
25% GreenPower	Your GreenPower preference can be set within your online account and changed at any time. No discount apply to GreenPower charges.	1.38 cents per kWh

Option	Description	Price (incl. GST)
10% GreenPower	Your GreenPower preference can be set within your online account and changed at any time. No discount apply to GreenPower charges.	0.55 cents per kWh

Climate zone 6: Mild temperate



Powershop Australia Pty Ltd

- No contract term
- Flexible Pricing

- Call 1800 462 668
- www.powershop.com.au

Estimated electricity cost

1 person	LOW 7.2 kWh/day	\$1,010/year No discount conditions apply to this offer
2 to 3 people	MED 11.8 kWh/day	\$1,440/year No discount conditions apply to this offer
4+ people	HIGH 15.5 kWh/day	\$1,790/year No discount conditions apply to this offer

Features

- Direct debit payment required
- No pay on time discount
- Green Power options
- No fixed price contract
- No paper bills available

Estimated costs are inclusive of GST and are based on typical usage in your postcode, with regular usage on weekday afternoons and evenings. Your household's usage may vary. Costs exclude controlled load charges, solar payments, concessions and bonuses. A more personalised estimate can be found on the Victorian Energy Compare website at <https://compare.energy.vic.gov.au>. Retailers must provide clear advice to help customers find the offer that best suits their circumstances. Contact the retailer by calling **1800 462 668** and quote this Offer ID **POD135401MR**.

Offer details

Distributor	United Energy
Offer type	Market offer
Fuel type	Electricity
Customer type	Residential
Release date	01-01-2020
Expiry date	31-12-2020

Offer eligibility

This product and document is only applicable to Victorian customers in the United Energy distribution area. Other eligibility criteria may apply, contact Powershop for details.

Contract details

Contract term	No contract term
Cooling off period	10 business days
Eligibility criteria	This product and document is only applicable to Victorian customers in the United Energy distribution area. Other eligibility criteria may apply, contact Powershop for details.
Prices are not fixed	We may update your tariff from time to time to reflect market changes and economic conditions. We'll always notify you of any tariff change - this will usually be by email, and by no later than the date of your next bill to be impacted by the variation.
Contract expiry details	This Powershop offer has no contract term or exit fees
Full terms and conditions	We do not issue paper bills and require a credit card or bank details. For more information in relation to Powershop and this offer, see full terms and conditions at: www.powershop.com.au/prices

Fees

Early termination fee	(incl. GST) Flat rate: \$0.00
This Powershop offer has no exit fees.	
Credit card payment processing fee	Flat rate: \$0.00

Powershop do not charge credit card fees.

Disconnection fee**Flat rate: \$54.52**

Disconnection fees may apply to manually de-energise a property. The fee will be passed on from your distributor and may vary.

Disconnection fee**Flat rate: \$12.28**

Disconnection fees may apply to remotely de-energise a property. The fee will be passed on from your distributor and may vary.

Additional information

In addition to the applicable prices, you may incur other fees, including disconnection fees. Information regarding fees is set out on our fees page powershop.com.au/fees

Billing details

Bill frequency	1 month
Payment options	Direct debit

Offer rate and details**Local time****Electricity charges (All year)****Tariff (incl. GST)**

Daily supply charge	91.72 c/day
Peak consumption – Mon - Fri, 3pm - 11pm All consumption	34.20c/kWh
Shoulder consumption – Mon - Fri, 7am - 3pm All consumption	23.88c/kWh
Off-peak consumption – Mon - Fri, 12am - 7am; Mon - Fri, 11pm - 12am; Sat - Sun, all day All consumption	20.52c/kWh

Daily supply charge: a charge that applies for supplying electricity to your premises for each day of the billing period, regardless of how much electricity is used.

kWh: a 'kWh' stands for kilowatt hour and is the unit of measurement for your electricity bill.

Solar feed-in tariff options

	Tariff
Current retailer feed-in tariff	12.00 c/kWh
Premium feed-in tariff	72.00 c/kWh

GreenPower options

When you choose to buy a GreenPower product from an energy retailer, the retailer then invests the additional charge in the renewable energy industry. These purchases are audited by a group of government agencies.

Option	Description	Price (incl. GST)
100% GreenPower	Your GreenPower preference can be set within your online account and changed at any time. No discount apply to GreenPower charges.	5.50 cents per kWh
50% GreenPower	Your GreenPower preference can be set within your online account and changed at any time. No discount apply to GreenPower charges.	2.75 cents per kWh
25% GreenPower	Your GreenPower preference can be set within your online account and changed at any time. No discount apply to GreenPower charges.	1.38 cents per kWh

Option	Description	Price (incl. GST)
10% GreenPower	Your GreenPower preference can be set within your online account and changed at any time. No discount apply to GreenPower charges.	0.55 cents per kWh

Climate zone 6: Mild temperate



Powershop Australia Pty Ltd

- No contract term
- Flexible Pricing with controlled load

- Call 1800 462 668
- www.powershop.com.au

Estimated electricity cost

1 person	LOW 7.2 kWh/day	\$1,030/year No discount conditions apply to this offer
2 to 3 people	MED 11.8 kWh/day	\$1,470/year No discount conditions apply to this offer
4+ people	HIGH 15.5 kWh/day	\$1,830/year No discount conditions apply to this offer

Features

- Direct debit payment required
- No pay on time discount
- Green Power options
- No fixed price contract
- No paper bills available

Estimated costs are inclusive of GST and are based on typical usage in your postcode, with regular usage on weekday afternoons and evenings. Your household's usage may vary. Costs exclude controlled load charges, solar payments, concessions and bonuses. A more personalised estimate can be found on the Victorian Energy Compare website at <https://compare.energy.vic.gov.au>. Retailers must provide clear advice to help customers find the offer that best suits their circumstances. Contact the retailer by calling **1800 462 668** and quote this Offer ID **POD135403MR**.

Offer details

Distributor	United Energy
Offer type	Market offer
Fuel type	Electricity
Customer type	Residential
Release date	01-01-2020
Expiry date	31-12-2020

Offer eligibility

This product and document is only applicable to Victorian customers in the United Energy distribution area. Other eligibility criteria may apply, contact Powershop for details.

Contract details

Contract term	No contract term
Cooling off period	10 business days
Eligibility criteria	This product and document is only applicable to Victorian customers in the United Energy distribution area. Other eligibility criteria may apply, contact Powershop for details.
Prices are not fixed	We may update your tariff from time to time to reflect market changes and economic conditions. We'll always notify you of any tariff change - this will usually be by email, and by no later than the date of your next bill to be impacted by the variation.
Contract expiry details	This Powershop offer has no contract term or exit fees
Full terms and conditions	We do not issue paper bills and require a credit card or bank details. For more information in relation to Powershop and this offer, see full terms and conditions at: www.powershop.com.au/prices

Fees

Early termination fee	(incl. GST) Flat rate: \$0.00
This Powershop offer has no exit fees.	
Credit card payment processing fee	Flat rate: \$0.00

Powershop do not charge credit card fees.

Disconnection fee **Flat rate: \$54.52**

Disconnection fees may apply to manually de-energise a property. The fee will be passed on from your distributor and may vary.

Disconnection fee **Flat rate: \$12.28**

Disconnection fees may apply to remotely de-energise a property. The fee will be passed on from your distributor and may vary.

Additional information

In addition to the applicable prices, you may incur other fees, including disconnection fees. Information regarding fees is set out on our fees page powershop.com.au/fees

Billing details

Bill frequency 1 month
Payment options Direct debit

Offer rate and details

Local time

Electricity charges (All year) **Tariff (incl. GST)**

Daily supply charge 91.72 c/day

Peak consumption – Mon - Fri, 3pm - 9pm

All consumption 35.81c/kWh

Shoulder consumption – Mon - Fri, 7am - 3pm; Mon - Fri, 9pm - 10pm; Sat - Sun, 7am - 10pm

All consumption 24.31c/kWh

Off-peak consumption – Everyday, 12am - 7am; Everyday, 10pm - 12am

All consumption 21.69c/kWh

Controlled load charges **Tariff (incl. GST)**

Controlled load consumption 19.47 c/kWh

Daily supply charge: a charge that applies for supplying electricity to your premises for each day of the billing period, regardless of how much electricity is used.

kWh: a 'kWh' stands for kilowatt hour and is the unit of measurement for your electricity bill.

Solar feed-in tariff options

	Tariff
Current retailer feed-in tariff	12.00 c/kWh
Premium feed-in tariff	72.00 c/kWh

GreenPower options

When you choose to buy a GreenPower product from an energy retailer, the retailer then invests the additional charge in the renewable energy industry. These purchases are audited by a group of government agencies.

Option	Description	Price (incl. GST)
100% GreenPower	Your GreenPower preference can be set within your online account and changed at any time. No discount apply to GreenPower charges.	5.50 cents per kWh

Option	Description	Price (incl. GST)
50% GreenPower	Your GreenPower preference can be set within your online account and changed at any time. No discount apply to GreenPower charges.	2.75 cents per kWh
25% GreenPower	Your GreenPower preference can be set within your online account and changed at any time. No discount apply to GreenPower charges.	1.38 cents per kWh
10% GreenPower	Your GreenPower preference can be set within your online account and changed at any time. No discount apply to GreenPower charges.	0.55 cents per kWh

Climate zone 6: Mild temperate



Powershop Australia Pty Ltd

- No contract term
- Flexible Pricing with controlled load

- Call 1800 462 668
- www.powershop.com.au

Estimated electricity cost

1 person	LOW 7.2 kWh/day	\$1,040/year No discount conditions apply to this offer
2 to 3 people	MED 11.8 kWh/day	\$1,490/year No discount conditions apply to this offer
4+ people	HIGH 15.5 kWh/day	\$1,850/year No discount conditions apply to this offer

Features

- Direct debit payment required
- No pay on time discount
- Green Power options
- No fixed price contract
- No paper bills available

Estimated costs are inclusive of GST and are based on typical usage in your postcode, with regular usage on weekday afternoons and evenings. Your household's usage may vary. Costs exclude controlled load charges, solar payments, concessions and bonuses. A more personalised estimate can be found on the Victorian Energy Compare website at <https://compare.energy.vic.gov.au>. Retailers must provide clear advice to help customers find the offer that best suits their circumstances. Contact the retailer by calling **1800 462 668** and quote this Offer ID **POD135404MR**.

Offer details

Distributor	United Energy
Offer type	Market offer
Fuel type	Electricity
Customer type	Residential
Release date	01-01-2020
Expiry date	31-12-2020

Offer eligibility

This product and document is only applicable to Victorian customers in the United Energy distribution area. Other eligibility criteria may apply, contact Powershop for details.

Contract details

Contract term	No contract term
Cooling off period	10 business days
Eligibility criteria	This product and document is only applicable to Victorian customers in the United Energy distribution area. Other eligibility criteria may apply, contact Powershop for details.
Prices are not fixed	We may update your tariff from time to time to reflect market changes and economic conditions. We'll always notify you of any tariff change - this will usually be by email, and by no later than the date of your next bill to be impacted by the variation.
Contract expiry details	This Powershop offer has no contract term or exit fees
Full terms and conditions	We do not issue paper bills and require a credit card or bank details. For more information in relation to Powershop and this offer, see full terms and conditions at: www.powershop.com.au/prices

Fees

Early termination fee	(incl. GST) Flat rate: \$0.00
This Powershop offer has no exit fees.	
Credit card payment processing fee	Flat rate: \$0.00

Powershop do not charge credit card fees.

Disconnection fee **Flat rate: \$54.52**

Disconnection fees may apply to manually de-energise a property. The fee will be passed on from your distributor and may vary.

Disconnection fee **Flat rate: \$12.28**

Disconnection fees may apply to remotely de-energise a property. The fee will be passed on from your distributor and may vary.

Additional information

In addition to the applicable prices, you may incur other fees, including disconnection fees. Information regarding fees is set out on our fees page powershop.com.au/fees

Billing details

Bill frequency 1 month
Payment options Direct debit

Offer rate and details

Local time

Electricity charges (All year) **Tariff (incl. GST)**

Daily supply charge 91.72 c/day

Peak consumption – Mon - Fri, 3pm - 9pm

All consumption 37.49c/kWh

Shoulder consumption – Mon - Fri, 7am - 3pm

All consumption 26.97c/kWh

Off-peak consumption – Mon - Fri, 12am - 7am; Mon - Fri, 9pm - 12am; Sat - Sun, all day

All consumption 21.86c/kWh

Controlled load charges **Tariff (incl. GST)**

Controlled load consumption 19.47 c/kWh

Daily supply charge: a charge that applies for supplying electricity to your premises for each day of the billing period, regardless of how much electricity is used.

kWh: a 'kWh' stands for kilowatt hour and is the unit of measurement for your electricity bill.

Solar feed-in tariff options

	Tariff
Current retailer feed-in tariff	12.00 c/kWh
Premium feed-in tariff	72.00 c/kWh

GreenPower options

When you choose to buy a GreenPower product from an energy retailer, the retailer then invests the additional charge in the renewable energy industry. These purchases are audited by a group of government agencies.

Option	Description	Price (incl. GST)
100% GreenPower	Your GreenPower preference can be set within your online account and changed at any time. No discount apply to GreenPower charges.	5.50 cents per kWh
50% GreenPower	Your GreenPower preference can be set within your online account and changed at any time. No discount apply to GreenPower charges.	2.75 cents per kWh

Option	Description	Price (incl. GST)
25% GreenPower	Your GreenPower preference can be set within your online account and changed at any time. No discount apply to GreenPower charges.	1.38 cents per kWh
10% GreenPower	Your GreenPower preference can be set within your online account and changed at any time. No discount apply to GreenPower charges.	0.55 cents per kWh

Climate zone 6: Mild temperate



Powershop Australia Pty Ltd

- No contract term
- Flexible Pricing with controlled load

- Call 1800 462 668
- www.powershop.com.au

Estimated electricity cost

1 person	LOW 7.2 kWh/day	\$1,010/year No discount conditions apply to this offer
2 to 3 people	MED 11.8 kWh/day	\$1,440/year No discount conditions apply to this offer
4+ people	HIGH 15.5 kWh/day	\$1,790/year No discount conditions apply to this offer

Features

- Direct debit payment required
- No pay on time discount
- Green Power options
- No fixed price contract
- No paper bills available

Estimated costs are inclusive of GST and are based on typical usage in your postcode, with regular usage on weekday afternoons and evenings. Your household's usage may vary. Costs exclude controlled load charges, solar payments, concessions and bonuses. A more personalised estimate can be found on the Victorian Energy Compare website at <https://compare.energy.vic.gov.au>. Retailers must provide clear advice to help customers find the offer that best suits their circumstances. Contact the retailer by calling **1800 462 668** and quote this Offer ID **POD135405MR**.

Offer details

Distributor	United Energy
Offer type	Market offer
Fuel type	Electricity
Customer type	Residential
Release date	01-01-2020
Expiry date	31-12-2020

Offer eligibility

This product and document is only applicable to Victorian customers in the United Energy distribution area. Other eligibility criteria may apply, contact Powershop for details.

Contract details

Contract term	No contract term
Cooling off period	10 business days
Eligibility criteria	This product and document is only applicable to Victorian customers in the United Energy distribution area. Other eligibility criteria may apply, contact Powershop for details.
Prices are not fixed	We may update your tariff from time to time to reflect market changes and economic conditions. We'll always notify you of any tariff change - this will usually be by email, and by no later than the date of your next bill to be impacted by the variation.
Contract expiry details	This Powershop offer has no contract term or exit fees
Full terms and conditions	We do not issue paper bills and require a credit card or bank details. For more information in relation to Powershop and this offer, see full terms and conditions at: www.powershop.com.au/prices

Fees

Early termination fee	(incl. GST) Flat rate: \$0.00
This Powershop offer has no exit fees.	
Credit card payment processing fee	Flat rate: \$0.00

Powershop do not charge credit card fees.

Disconnection fee **Flat rate: \$54.52**

Disconnection fees may apply to manually de-energise a property. The fee will be passed on from your distributor and may vary.

Disconnection fee **Flat rate: \$12.28**

Disconnection fees may apply to remotely de-energise a property. The fee will be passed on from your distributor and may vary.

Additional information

In addition to the applicable prices, you may incur other fees, including disconnection fees. Information regarding fees is set out on our fees page powershop.com.au/fees

Billing details

Bill frequency 1 month
Payment options Direct debit

Offer rate and details

Local time

Electricity charges (All year) **Tariff (incl. GST)**

Daily supply charge 91.72 c/day

Peak consumption – Mon - Fri, 3pm - 11pm
All consumption 34.20c/kWh

Shoulder consumption – Mon - Fri, 7am - 3pm
All consumption 23.88c/kWh

Off-peak consumption – Mon - Fri, 12am - 7am; Mon - Fri, 11pm - 12am; Sat - Sun, all day
All consumption 20.52c/kWh

Controlled load charges **Tariff (incl. GST)**

Controlled load consumption 19.47 c/kWh

Daily supply charge: a charge that applies for supplying electricity to your premises for each day of the billing period, regardless of how much electricity is used.

kWh: a 'kWh' stands for kilowatt hour and is the unit of measurement for your electricity bill.

Solar feed-in tariff options

	Tariff
Current retailer feed-in tariff	12.00 c/kWh
Premium feed-in tariff	72.00 c/kWh

GreenPower options

When you choose to buy a GreenPower product from an energy retailer, the retailer then invests the additional charge in the renewable energy industry. These purchases are audited by a group of government agencies.

Option	Description	Price (incl. GST)
100% GreenPower	Your GreenPower preference can be set within your online account and changed at any time. No discount apply to GreenPower charges.	5.50 cents per kWh
50% GreenPower	Your GreenPower preference can be set within your online account and changed at any time. No discount apply to GreenPower charges.	2.75 cents per kWh

Option	Description	Price (incl. GST)
25% GreenPower	Your GreenPower preference can be set within your online account and changed at any time. No discount apply to GreenPower charges.	1.38 cents per kWh
10% GreenPower	Your GreenPower preference can be set within your online account and changed at any time. No discount apply to GreenPower charges.	0.55 cents per kWh

Climate zone 6: Mild temperate