

# Victorian Energy Fact Sheet

When you're signing up to something new, it's important to know what's what. Here's some essential info about Powershop and this offer.



**ELECTRICITY**

OFFER **POWERSHOP**LITE

DISTRIBUTOR **UNITED ENERGY**

## About Powershop

We sell energy to homes and businesses in Victoria, NSW, South East QLD and South Australia. We work hard to provide better prices, a fairer deal for all our customers, and a better future for the planet.



Get energy insights and stay in control of your energy use

**OVER 200,000**  
app downloads



Get the best service from our award winning Customer Team

**93%** average  
customer  
satisfaction rating

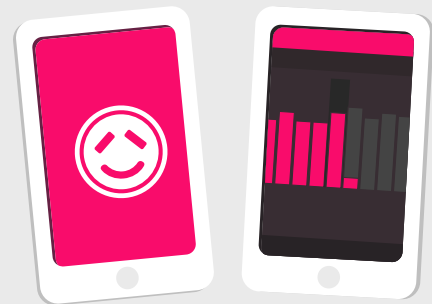


Get 100% carbon offset energy at no extra cost to you

**OVER 1.8 Million**  
tonnes of carbon offset  
thanks to Powershop customers

## About this offer

This is a simple set and forget offer with no discounts, just a great rate. You get access to the Powershop app to manage your bills and energy usage.



## Need Help?

Visit our help centre:  
[powershop.com.au/help](https://powershop.com.au/help)

Call us on:  
**1800 462 668**

The following pages have been created by the Victorian Energy Compare Government website.

Get in touch if you're not sure how to read the info on the following pages. We can help you understand which rates, tariff and climate zone applies to you.

You can also visit  
[powershop.com.au/vic-energy-fact-sheets](https://powershop.com.au/vic-energy-fact-sheets)

# Victorian Energy Fact Sheet

TARIFF	CHARGE	UNIT	INC. GST
Medium Single Rate with Demand	Anytime	c/kWh	24.99
	Daily Supply Charge	c/day	114.97
	Summer Demand	c/kW/day	59.97
	Non Summer Demand	c/kW/day	39.96
LVkWTOU - 5 Day 7 to 7	Peak	c/kWh	31.68
	Off Peak	c/kWh	22.92
	Daily Supply Charge	c/day	114.97
	Summer Demand Incentive	c/kW/day	7.33
5 Day TOU with Summer Demand	Peak	c/kWh	31.68
	Off Peak	c/kWh	22.92
	Daily Supply Charge	c/day	114.97
	Summer Demand Incentive	c/kW/day	61.35

## VARIATION OF TARIFFS

If we vary our tariffs and charges for the sale of energy to you under this contract, we'll give you notice as soon as reasonably practicable. This will usually be by email, and by no later than the date of your next bill to be impacted by the variation.

## OTHER FEES

In addition to the applicable prices, you may incur other fees, including disconnection fees. Information regarding fees is set out on our fees page [powershop.com.au/fees](https://powershop.com.au/fees).

## CONTRACT INFORMATION

This Powershop offer has no exit fees or contract term, so you're free to leave whenever you want (although we hope you won't).



### Powershop Australia Pty Ltd

- No contract term
- Single rate

- Call 1800 462 668
- [www.powershop.com.au](http://www.powershop.com.au)

#### Estimated Electricity costs

We are unable to provide an estimate for this offer.

Please contact **Powershop Australia Pty Ltd** on **1800 462 668** for pricing details.



#### Features

- Direct debit payment required
- No pay on time discount
- Green Power options
- No fixed price contract
- No paper bills available

Estimated costs are based on typical usage in your postcode, with regular usage on weekday afternoons and evenings. Your household's usage may vary. Costs exclude controlled load charges, solar payments, concessions and bonuses.

A more personalised estimate can be found on the Victorian Energy Compare website at <https://compare.energy.vic.gov.au>.

Retailers must provide clear advice to help customers find the offer that best suits their circumstances.

Contact the retailer by calling **1800 462 668** and quote this Offer ID **POD135264MS**.

#### Offer details

<b>Distributor</b>	United Energy
<b>Offer type</b>	Market offer
<b>Fuel type</b>	Electricity
<b>Customer type</b>	Small business
<b>Release date</b>	01-01-2020
<b>Expiry date</b>	31-12-2020

#### Offer eligibility

This product and document is only applicable to Victorian customers in the United Energy distribution area. Other eligibility criteria may apply, contact Powershop for details.

#### Contract details

<b>Contract term</b>	No contract term
<b>Cooling off period</b>	10 business days
<b>Eligibility criteria</b>	This product and document is only applicable to Victorian customers in the United Energy distribution area. Other eligibility criteria may apply, contact Powershop for details.
<b>Prices are not fixed</b>	We may update your tariff from time to time to reflect market changes and economic conditions. We'll always notify you of any tariff change - this will usually be by email, and by no later than the date of your next bill to be impacted by the variation.
<b>Contract expiry details</b>	This Powershop offer has no contract term or exit fees
<b>Full terms and conditions</b>	We do not issue paper bills and require a credit card or bank details. For more information in relation to Powershop and this offer, see full terms and conditions at: <a href="http://www.powershop.com.au/prices">www.powershop.com.au/prices</a>

#### Fees

	(incl. GST)
<b>Early termination fee</b>	<b>Flat rate: \$0.00</b>
This Powershop offer has no exit fees	
<b>Credit card payment processing fee</b>	<b>Flat rate: \$0.00</b>

Powershop do not charge credit card fees

---

**Disconnection fee****Flat rate: \$54.52**

Disconnection fees may apply to manually de-energise a property. The fee will be passed on from your distributor and may vary.

---

**Disconnection fee****Flat rate: \$12.28**

Disconnection fees may apply to remotely de-energise a property. The fee will be passed on from your distributor and may vary.

---

**Additional information**

In addition to the applicable prices, you may incur other fees, including disconnection fees. Information regarding fees is set out on our fees page [powershop.com.au/fees](https://powershop.com.au/fees)

---

---

## Billing details

<b>Bill frequency</b>	1 month
<b>Payment options</b>	Direct debit

---

## Offer rate and details

### Local time

### Electricity charges (All year)

**Tariff (incl. GST)**

---

<b>Daily supply charge</b>	145.32 c/day
<b>Peak consumption</b>	
All consumption	31.42c/kWh

**Daily supply charge:** a charge that applies for supplying electricity to your premises for each day of the billing period, regardless of how much electricity is used.

**kWh:** a 'kWh' stands for kilowatt hour and is the unit of measurement for your electricity bill.

---

## Solar feed-in tariff options

---

	<b>Tariff</b>
<b>Current retailer feed-in tariff</b>	12.00 c/kWh
<b>Premium feed-in tariff</b>	72.00 c/kWh

---

---

## GreenPower options

When you choose to buy a GreenPower product from an energy retailer, the retailer then invests the additional charge in the renewable energy industry. These purchases are audited by a group of government agencies.

---

<b>Option</b>	<b>Description</b>	<b>Price (incl. GST)</b>
<b>100% GreenPower</b>	Your GreenPower preference can be set within your online account and changed at any time. No discount apply to GreenPower charges.	5.50 cents per kWh
<b>50% GreenPower</b>	Your GreenPower preference can be set within your online account and changed at any time. No discount apply to GreenPower charges.	2.75 cents per kWh
<b>25% GreenPower</b>	Your GreenPower preference can be set within your online account and changed at any time. No discount apply to GreenPower charges.	1.38 cents per kWh
<b>10% GreenPower</b>	Your GreenPower preference can be set within your online account and changed at any time. No discount apply to GreenPower charges.	0.55 cents per kWh

---



### Powershop Australia Pty Ltd

- No contract term
- Single rate

- Call 1800 462 668
- [www.powershop.com.au](http://www.powershop.com.au)

#### Estimated Electricity costs

We are unable to provide an estimate for this offer.

Please contact **Powershop Australia Pty Ltd** on **1800 462 668** for pricing details.



#### Features

- Direct debit payment required
- No pay on time discount
- Green Power options
- No fixed price contract
- No paper bills available

Estimated costs are based on typical usage in your postcode, with regular usage on weekday afternoons and evenings. Your household's usage may vary. Costs exclude controlled load charges, solar payments, concessions and bonuses.

A more personalised estimate can be found on the Victorian Energy Compare website at <https://compare.energy.vic.gov.au>.

Retailers must provide clear advice to help customers find the offer that best suits their circumstances.

Contact the retailer by calling **1800 462 668** and quote this Offer ID **POD135265MS**.

#### Offer details

<b>Distributor</b>	United Energy
<b>Offer type</b>	Market offer
<b>Fuel type</b>	Electricity
<b>Customer type</b>	Small business
<b>Release date</b>	01-01-2020
<b>Expiry date</b>	31-12-2020

#### Offer eligibility

This product and document is only applicable to Victorian customers in the United Energy distribution area. Other eligibility criteria may apply, contact Powershop for details.

#### Contract details

<b>Contract term</b>	No contract term
<b>Cooling off period</b>	10 business days
<b>Eligibility criteria</b>	This product and document is only applicable to Victorian customers in the United Energy distribution area. Other eligibility criteria may apply, contact Powershop for details.
<b>Prices are not fixed</b>	We may update your tariff from time to time to reflect market changes and economic conditions. We'll always notify you of any tariff change - this will usually be by email, and by no later than the date of your next bill to be impacted by the variation.
<b>Contract expiry details</b>	This Powershop offer has no contract term or exit fees
<b>Full terms and conditions</b>	We do not issue paper bills and require a credit card or bank details. For more information in relation to Powershop and this offer, see full terms and conditions at: <a href="http://www.powershop.com.au/prices">www.powershop.com.au/prices</a>

#### Fees

<b>Early termination fee</b>	(incl. GST) Flat rate: \$0.00
This Powershop offer has no exit fees	
<b>Credit card payment processing fee</b>	Flat rate: \$0.00

Powershop do not charge credit card fees.

---

**Disconnection fee****Flat rate: \$54.52**

Disconnection fees may apply to manually de-energise a property. The fee will be passed on from your distributor and may vary.

---

**Disconnection fee****Flat rate: \$12.28**

Disconnection fees may apply to remotely de-energise a property. The fee will be passed on from your distributor and may vary.

---

**Additional information**

In addition to the applicable prices, you may incur other fees, including disconnection fees. Information regarding fees is set out on our fees page [powershop.com.au/fees](https://powershop.com.au/fees)

---

---

**Billing details**

**Bill frequency** 1 month  
**Payment options** Direct debit

---

**Offer rate and details****Local time**

---

**Season 1 electricity charges - Non-Summer (01-Jul - 30-Nov)****Tariff (incl. GST)**

---

**Daily supply charge** 114.97 c/day**Peak consumption**

---

All consumption 24.99c/kWh

---

**Demand charge – Mon - Fri, 10am - 6pm** 39.96 cents per kW per Day

Non-Summer Demand Charge

Demand calculation is based on the maximum measured interval consumption occurring between 10am - 6pm Mon - Fri.

Applies per Month on the maximum kW demand for all usage. Minimum charges based on demand of 1.5 kW.

---

**Season 2 electricity charges - Summer (01-Dec - 31-Mar)****Tariff (incl. GST)**

---

**Daily supply charge** 114.97 c/day**Peak consumption**

---

All consumption 24.99c/kWh

---

**Demand charge – Mon - Fri, 10am - 6pm** 59.97 cents per kW per Day

Summer Demand Charge

Demand calculation is based on the maximum measured interval consumption occurring between 10am - 6pm Mon - Fri.

Applies per Month on the maximum kW demand for all usage. Minimum charges based on demand of 1.5 kW.

---

**Season 3 electricity charges - Non-Summer (01-Apr - 30-Jun)****Tariff (incl. GST)**

---

**Daily supply charge** 114.97 c/day**Peak consumption**

---

All consumption 24.99c/kWh

---

**Demand charge – Mon - Fri, 10am - 6pm** 39.96 cents per kW per Day

Non-Summer Demand Charge

Demand calculation is based on the maximum measured interval consumption occurring between 10am - 6pm Mon - Fri.

Applies per Month on the maximum kW demand for all usage. Minimum charges based on demand of 1.5 kW.

**Daily supply charge:** a charge that applies for supplying electricity to your premises for each day of the billing period, regardless of how much electricity is used.

kWh: a 'kWh' stands for kilowatt hour and is the unit of measurement for your electricity bill.

## Solar feed-in tariff options

	Tariff
<b>Current retailer feed-in tariff</b>	12.00 c/kWh
<b>Premium feed-in tariff</b>	72.00 c/kWh



## GreenPower options

When you choose to buy a GreenPower product from an energy retailer, the retailer then invests the additional charge in the renewable energy industry. These purchases are audited by a group of government agencies.

Option	Description	Price (incl. GST)
<b>100% GreenPower</b>	Your GreenPower preference can be set within your online account and changed at any time. No discount apply to GreenPower charges.	5.50 cents per kWh
<b>50% GreenPower</b>	Your GreenPower preference can be set within your online account and changed at any time. No discount apply to GreenPower charges.	2.75 cents per kWh
<b>25% GreenPower</b>	Your GreenPower preference can be set within your online account and changed at any time. No discount apply to GreenPower charges.	1.38 cents per kWh
<b>10% GreenPower</b>	Your GreenPower preference can be set within your online account and changed at any time. No discount apply to GreenPower charges.	0.55 cents per kWh



## Powershop Australia Pty Ltd

-  No contract term
-  Two rate: single rate with controlled load

-  Call 1800 462 668
-  [www.powershop.com.au](http://www.powershop.com.au)






### Estimated Electricity costs

We are unable to provide an estimate for this offer.

Please contact **Powershop Australia Pty Ltd** on **1800 462 668** for pricing details.



### Features

-  Direct debit payment required
-  No pay on time discount
-  Green Power options
-  No fixed price contract
-  No paper bills available

Estimated costs are based on typical usage in your postcode, with regular usage on weekday afternoons and evenings. Your household's usage may vary. Costs exclude controlled load charges, solar payments, concessions and bonuses.

A more personalised estimate can be found on the Victorian Energy Compare website at <https://compare.energy.vic.gov.au>.

Retailers must provide clear advice to help customers find the offer that best suits their circumstances.

Contact the retailer by calling **1800 462 668** and quote this Offer ID **POD135263MS**.

### Offer details

<b>Distributor</b>	United Energy
<b>Offer type</b>	Market offer
<b>Fuel type</b>	Electricity
<b>Customer type</b>	Small business
<b>Release date</b>	01-01-2020
<b>Expiry date</b>	31-12-2020

### Offer eligibility

This product and document is only applicable to Victorian customers in the United Energy distribution area. Other eligibility criteria may apply, contact Powershop for details.

### Contract details

<b>Contract term</b>	No contract term
<b>Cooling off period</b>	10 business days
<b>Eligibility criteria</b>	This product and document is only applicable to Victorian customers in the United Energy distribution area. Other eligibility criteria may apply, contact Powershop for details.
<b>Prices are not fixed</b>	We may update your tariff from time to time to reflect market changes and economic conditions. We'll always notify you of any tariff change - this will usually be by email, and by no later than the date of your next bill to be impacted by the variation.
<b>Contract expiry details</b>	This Powershop offer has no contract term or exit fees
<b>Full terms and conditions</b>	We do not issue paper bills and require a credit card or bank details. For more information in relation to Powershop and this offer, see full terms and conditions at: <a href="http://www.powershop.com.au/prices">www.powershop.com.au/prices</a>

### Fees

<b>Early termination fee</b>	(incl. GST) Flat rate: \$0.00
This Powershop offer has no exit fees	
<b>Credit card payment processing fee</b>	Flat rate: \$0.00



Powershop do not charge credit card fees

**Disconnection fee** **Flat rate: \$54.52**

Disconnection fees may apply to manually de-energise a property. The fee will be passed on from your distributor and may vary.

**Disconnection fee** **Flat rate: \$12.28**

Disconnection fees may apply to remotely de-energise a property. The fee will be passed on from your distributor and may vary.

#### Additional information

In addition to the applicable prices, you may incur other fees, including disconnection fees. Information regarding fees is set out on our fees page [powershop.com.au/fees](http://powershop.com.au/fees)

## Billing details

**Bill frequency** 1 month  
**Payment options** Direct debit

## Offer rate and details

Local time

**Electricity charges (All year)** **Tariff (incl. GST)**

**Daily supply charge** 145.32 c/day

#### Peak consumption

All consumption 31.42c/kWh

**Controlled load charges** **Tariff (incl. GST)**

**Controlled load consumption** 19.47 c/kWh

**Daily supply charge:** a charge that applies for supplying electricity to your premises for each day of the billing period, regardless of how much electricity is used.

**kWh:** a 'kWh' stands for kilowatt hour and is the unit of measurement for your electricity bill.

## Solar feed-in tariff options

	Tariff
<b>Current retailer feed-in tariff</b>	12.00 c/kWh
<b>Premium feed-in tariff</b>	72.00 c/kWh

## GreenPower options

When you choose to buy a GreenPower product from an energy retailer, the retailer then invests the additional charge in the renewable energy industry. These purchases are audited by a group of government agencies.

Option	Description	Price (incl. GST)
<b>100% GreenPower</b>	Your GreenPower preference can be set within your online account and changed at any time. No discount apply to GreenPower charges.	5.50 cents per kWh
<b>50% GreenPower</b>	Your GreenPower preference can be set within your online account and changed at any time. No discount apply to GreenPower charges.	2.75 cents per kWh
<b>25% GreenPower</b>	Your GreenPower preference can be set within your online account and changed at any time. No discount apply to GreenPower charges.	1.38 cents per kWh

Option	Description	Price (incl. GST)
<b>10% GreenPower</b>	Your GreenPower preference can be set within your online account and changed at any time. No discount apply to GreenPower charges.	0.55 cents per kWh



## Powershop Australia Pty Ltd

- No contract term
- Time of use

- Call 1800 462 668
- [www.powershop.com.au](http://www.powershop.com.au)

### Estimated Electricity costs

We are unable to provide an estimate for this offer.

Please contact **Powershop Australia Pty Ltd** on **1800 462 668** for pricing details.



### Features

- Direct debit payment required
- No pay on time discount
- Green Power options
- No fixed price contract
- No paper bills available

Estimated costs are based on typical usage in your postcode, with regular usage on weekday afternoons and evenings. Your household's usage may vary. Costs exclude controlled load charges, solar payments, concessions and bonuses.

A more personalised estimate can be found on the Victorian Energy Compare website at <https://compare.energy.vic.gov.au>.

Retailers must provide clear advice to help customers find the offer that best suits their circumstances.

Contact the retailer by calling **1800 462 668** and quote this Offer ID **POD135239MS**.

### Offer details

<b>Distributor</b>	United Energy
<b>Offer type</b>	Market offer
<b>Fuel type</b>	Electricity
<b>Customer type</b>	Small business
<b>Release date</b>	01-01-2020
<b>Expiry date</b>	31-12-2020

### Offer eligibility

This product and document is only applicable to Victorian customers in the United Energy distribution area. Other eligibility criteria may apply, contact Powershop for details.

### Contract details

<b>Contract term</b>	No contract term
<b>Cooling off period</b>	10 business days
<b>Eligibility criteria</b>	This product and document is only applicable to Victorian customers in the United Energy distribution area. Other eligibility criteria may apply, contact Powershop for details.
<b>Prices are not fixed</b>	We may update your tariff from time to time to reflect market changes and economic conditions. We'll always notify you of any tariff change - this will usually be by email, and by no later than the date of your next bill to be impacted by the variation.
<b>Contract expiry details</b>	This Powershop offer has no contract term or exit fees
<b>Full terms and conditions</b>	We do not issue paper bills and require a credit card or bank details. For more information in relation to Powershop and this offer, see full terms and conditions at: <a href="http://www.powershop.com.au/prices">www.powershop.com.au/prices</a>

### Fees

<b>Early termination fee</b>	(incl. GST) Flat rate: \$0.00
This Powershop offer has no exit fees	
<b>Credit card payment processing fee</b>	Flat rate: \$0.00

Powershop do not charge credit card fees

**Disconnection fee** **Flat rate: \$54.52**

Disconnection fees may apply to manually de-energise a property. The fee will be passed on from your distributor and may vary.

**Disconnection fee** **Flat rate: \$12.28**

Disconnection fees may apply to remotely de-energise a property. The fee will be passed on from your distributor and may vary.

#### Additional information

In addition to the applicable prices, you may incur other fees, including disconnection fees. Information regarding fees is set out on our fees page [powershop.com.au/fees](http://powershop.com.au/fees)

## Billing details

**Bill frequency** 1 month  
**Payment options** Direct debit

## Offer rate and details

Local time

**Electricity charges (All year)** **Tariff (incl. GST)**

**Daily supply charge** 155.50 c/day

**Peak consumption** – Mon - Fri, 7am - 11pm

All consumption 33.55c/kWh

**Off-peak consumption** – Mon - Fri, 11pm - 12am; Mon - Fri, 12am - 7am; Sat - Sun, all day

All consumption 22.20c/kWh

**Daily supply charge:** a charge that applies for supplying electricity to your premises for each day of the billing period, regardless of how much electricity is used.

**kWh:** a 'kWh' stands for kilowatt hour and is the unit of measurement for your electricity bill.

## Solar feed-in tariff options

	Tariff
<b>Current retailer feed-in tariff</b>	12.00 c/kWh
<b>Premium feed-in tariff</b>	72.00 c/kWh

## GreenPower options

When you choose to buy a GreenPower product from an energy retailer, the retailer then invests the additional charge in the renewable energy industry. These purchases are audited by a group of government agencies.

Option	Description	Price (incl. GST)
<b>100% GreenPower</b>	Your GreenPower preference can be set within your online account and changed at any time. No discount apply to GreenPower charges.	5.50 cents per kWh
<b>50% GreenPower</b>	Your GreenPower preference can be set within your online account and changed at any time. No discount apply to GreenPower charges.	2.75 cents per kWh
<b>25% GreenPower</b>	Your GreenPower preference can be set within your online account and changed at any time. No discount apply to GreenPower charges.	1.38 cents per kWh
<b>10% GreenPower</b>	Your GreenPower preference can be set within your online account and changed at any time. No discount apply to GreenPower charges.	0.55 cents per kWh





### Powershop Australia Pty Ltd

- No contract term
- Time of use

- Call 1800 462 668
- [www.powershop.com.au](http://www.powershop.com.au)

#### Estimated Electricity costs

We are unable to provide an estimate for this offer.

Please contact **Powershop Australia Pty Ltd** on **1800 462 668** for pricing details.



#### Features

- Direct debit payment required
- No pay on time discount
- Green Power options
- No fixed price contract
- No paper bills available

Estimated costs are based on typical usage in your postcode, with regular usage on weekday afternoons and evenings. Your household's usage may vary. Costs exclude controlled load charges, solar payments, concessions and bonuses.

A more personalised estimate can be found on the Victorian Energy Compare website at <https://compare.energy.vic.gov.au>.

Retailers must provide clear advice to help customers find the offer that best suits their circumstances.

Contact the retailer by calling **1800 462 668** and quote this Offer ID **POD135240MS**.

#### Offer details

<b>Distributor</b>	United Energy
<b>Offer type</b>	Market offer
<b>Fuel type</b>	Electricity
<b>Customer type</b>	Small business
<b>Release date</b>	01-01-2020
<b>Expiry date</b>	31-12-2020

#### Offer eligibility

This product and document is only applicable to Victorian customers in the United Energy distribution area. Other eligibility criteria may apply, contact Powershop for details.

#### Contract details

<b>Contract term</b>	No contract term
<b>Cooling off period</b>	10 business days
<b>Eligibility criteria</b>	This product and document is only applicable to Victorian customers in the United Energy distribution area. Other eligibility criteria may apply, contact Powershop for details.
<b>Prices are not fixed</b>	We may update your tariff from time to time to reflect market changes and economic conditions. We'll always notify you of any tariff change - this will usually be by email, and by no later than the date of your next bill to be impacted by the variation.
<b>Contract expiry details</b>	This Powershop offer has no contract term or exit fees
<b>Full terms and conditions</b>	We do not issue paper bills and require a credit card or bank details. For more information in relation to Powershop and this offer, see full terms and conditions at: <a href="http://www.powershop.com.au/prices">www.powershop.com.au/prices</a>

#### Fees

	(incl. GST)
<b>Early termination fee</b>	<b>Flat rate: \$0.00</b>
This Powershop offer has no exit fees	
<b>Credit card payment processing fee</b>	<b>Flat rate: \$0.00</b>

Powershop do not charge credit card fees

**Disconnection fee** **Flat rate: \$54.52**

Disconnection fees may apply to manually de-energise a property. The fee will be passed on from your distributor and may vary.

**Disconnection fee** **Flat rate: \$12.28**

Disconnection fees may apply to remotely de-energise a property. The fee will be passed on from your distributor and may vary.

#### Additional information

In addition to the applicable prices, you may incur other fees, including disconnection fees. Information regarding fees is set out on our fees page [powershop.com.au/fees](https://powershop.com.au/fees)

## Billing details

**Bill frequency** 1 month  
**Payment options** Direct debit

## Offer rate and details

Local time

**Electricity charges (All year)** **Tariff (incl. GST)**

**Daily supply charge** 155.99 c/day

**Peak consumption** – Everyday, 7am - 11pm

All consumption 33.34c/kWh

**Off-peak consumption** – Everyday, 11pm - 12am; Everyday, 12am - 7am

All consumption 21.92c/kWh

**Daily supply charge:** a charge that applies for supplying electricity to your premises for each day of the billing period, regardless of how much electricity is used.

**kWh:** a 'kWh' stands for kilowatt hour and is the unit of measurement for your electricity bill.

## Solar feed-in tariff options

	Tariff
<b>Current retailer feed-in tariff</b>	12.00 c/kWh
<b>Premium feed-in tariff</b>	72.00 c/kWh

## GreenPower options

When you choose to buy a GreenPower product from an energy retailer, the retailer then invests the additional charge in the renewable energy industry. These purchases are audited by a group of government agencies.

Option	Description	Price (incl. GST)
<b>100% GreenPower</b>	Your GreenPower preference can be set within your online account and changed at any time. No discount apply to GreenPower charges.	5.50 cents per kWh
<b>50% GreenPower</b>	Your GreenPower preference can be set within your online account and changed at any time. No discount apply to GreenPower charges.	2.75 cents per kWh
<b>25% GreenPower</b>	Your GreenPower preference can be set within your online account and changed at any time. No discount apply to GreenPower charges.	1.38 cents per kWh
<b>10% GreenPower</b>	Your GreenPower preference can be set within your online account and changed at any time. No discount apply to GreenPower charges.	0.55 cents per kWh







### Powershop Australia Pty Ltd

- No contract term
- Time of use

- Call 1800 462 668
- [www.powershop.com.au](http://www.powershop.com.au)

#### Estimated Electricity costs

We are unable to provide an estimate for this offer.

Please contact **Powershop Australia Pty Ltd** on **1800 462 668** for pricing details.



#### Features

- Direct debit payment required
- No pay on time discount
- Green Power options
- No fixed price contract
- No paper bills available

Estimated costs are based on typical usage in your postcode, with regular usage on weekday afternoons and evenings. Your household's usage may vary. Costs exclude controlled load charges, solar payments, concessions and bonuses.

A more personalised estimate can be found on the Victorian Energy Compare website at <https://compare.energy.vic.gov.au>.

Retailers must provide clear advice to help customers find the offer that best suits their circumstances.

Contact the retailer by calling **1800 462 668** and quote this Offer ID **POD135241MS**.

#### Offer details

<b>Distributor</b>	United Energy
<b>Offer type</b>	Market offer
<b>Fuel type</b>	Electricity
<b>Customer type</b>	Small business
<b>Release date</b>	01-01-2020
<b>Expiry date</b>	31-12-2020

#### Offer eligibility

This product and document is only applicable to Victorian customers in the United Energy distribution area. Other eligibility criteria may apply, contact Powershop for details.

#### Contract details

<b>Contract term</b>	No contract term
<b>Cooling off period</b>	10 business days
<b>Eligibility criteria</b>	This product and document is only applicable to Victorian customers in the United Energy distribution area. Other eligibility criteria may apply, contact Powershop for details.
<b>Prices are not fixed</b>	We may update your tariff from time to time to reflect market changes and economic conditions. We'll always notify you of any tariff change - this will usually be by email, and by no later than the date of your next bill to be impacted by the variation.
<b>Contract expiry details</b>	This Powershop offer has no contract term or exit fees
<b>Full terms and conditions</b>	We do not issue paper bills and require a credit card or bank details. For more information in relation to Powershop and this offer, see full terms and conditions at: <a href="http://www.powershop.com.au/prices">www.powershop.com.au/prices</a>

#### Fees

	(incl. GST)
<b>Early termination fee</b>	<b>Flat rate: \$0.00</b>
This Powershop offer has no exit fees	
<b>Credit card payment processing fee</b>	<b>Flat rate: \$0.00</b>

Powershop do not charge credit card fees.

---

**Disconnection fee****Flat rate: \$54.52**

Disconnection fees may apply to manually de-energise a property. The fee will be passed on from your distributor and may vary.

---

**Disconnection fee****Flat rate: \$12.28**

Disconnection fees may apply to remotely de-energise a property. The fee will be passed on from your distributor and may vary.

---

**Additional information**

In addition to the applicable prices, you may incur other fees, including disconnection fees. Information regarding fees is set out on our fees page [powershop.com.au/fees](https://powershop.com.au/fees).

---

---

**Billing details**

<b>Bill frequency</b>	1 month
<b>Payment options</b>	Direct debit

---

**Offer rate and details****Local time**

---

**Season 1 electricity charges - Non-Summer (01-Jul - 31-Oct)****Tariff (incl. GST)**

---

**Daily supply charge** 114.97 c/day**Peak consumption** – Mon - Fri, 7am - 11pm

All consumption 31.68c/kWh

**Off-peak consumption** – Mon - Fri, 12am - 7am; Mon - Fri, 11pm - 12am; Sat - Sun, all day

All consumption 22.92c/kWh

---

**Season 2 electricity charges - Summer (01-Nov - 31-Mar)****Tariff (incl. GST)**

---

**Daily supply charge** 114.97 c/day**Peak consumption** – Mon - Fri, 7am - 11pm

All consumption 31.68c/kWh

**Off-peak consumption** – Mon - Fri, 12am - 7am; Mon - Fri, 11pm - 12am; Sat - Sun, all day

All consumption 22.92c/kWh

**Demand charge** – Mon - Fri, 2pm - 7pm

61.35 cents per kW per Day

Summer Demand Incentive Charge

Demand calculation is based on the maximum measured interval consumption occurring between 2pm - 7pm Mon - Fri.

Applies per Month on the maximum kW demand for all usage.

---

**Season 3 electricity charges - Non-Summer (01-Apr - 30-Jun)****Tariff (incl. GST)**

---

**Daily supply charge** 114.97 c/day**Peak consumption** – Mon - Fri, 7am - 11pm

All consumption 31.68c/kWh

**Off-peak consumption** – Mon - Fri, 12am - 7am; Mon - Fri, 11pm - 12am; Sat - Sun, all day

All consumption 22.92c/kWh

**Daily supply charge:** a charge that applies for supplying electricity to your premises for each day of the billing period, regardless of how much electricity is used.

**kWh:** a 'kWh' stands for kilowatt hour and is the unit of measurement for your electricity bill.

## Solar feed-in tariff options

	<b>Tariff</b>
<b>Current retailer feed-in tariff</b>	12.00 c/kWh
<b>Premium feed-in tariff</b>	72.00 c/kWh

## GreenPower options

When you choose to buy a GreenPower product from an energy retailer, the retailer then invests the additional charge in the renewable energy industry. These purchases are audited by a group of government agencies.

<b>Option</b>	<b>Description</b>	<b>Price (incl. GST)</b>
<b>100% GreenPower</b>	Your GreenPower preference can be set within your online account and changed at any time. No discount apply to GreenPower charges.	5.50 cents per kWh
<b>50% GreenPower</b>	Your GreenPower preference can be set within your online account and changed at any time. No discount apply to GreenPower charges.	2.75 cents per kWh
<b>25% GreenPower</b>	Your GreenPower preference can be set within your online account and changed at any time. No discount apply to GreenPower charges.	1.38 cents per kWh
<b>10% GreenPower</b>	Your GreenPower preference can be set within your online account and changed at any time. No discount apply to GreenPower charges.	0.55 cents per kWh



## Powershop Australia Pty Ltd

- No contract term
- Time of use

- Call 1800 462 668
- [www.powershop.com.au](http://www.powershop.com.au)

### Estimated Electricity costs

We are unable to provide an estimate for this offer.

Please contact **Powershop Australia Pty Ltd** on **1800 462 668** for pricing details.



### Features

- Direct debit payment required
- No pay on time discount
- Green Power options
- No fixed price contract
- No paper bills available

Estimated costs are based on typical usage in your postcode, with regular usage on weekday afternoons and evenings. Your household's usage may vary. Costs exclude controlled load charges, solar payments, concessions and bonuses.

A more personalised estimate can be found on the Victorian Energy Compare website at <https://compare.energy.vic.gov.au>.

Retailers must provide clear advice to help customers find the offer that best suits their circumstances.

Contact the retailer by calling **1800 462 668** and quote this Offer ID **POD135242MS**.

### Offer details

<b>Distributor</b>	United Energy
<b>Offer type</b>	Market offer
<b>Fuel type</b>	Electricity
<b>Customer type</b>	Small business
<b>Release date</b>	01-01-2020
<b>Expiry date</b>	31-12-2020

### Offer eligibility

This product and document is only applicable to Victorian customers in the United Energy distribution area. Other eligibility criteria may apply, contact Powershop for details.

### Contract details

<b>Contract term</b>	No contract term
<b>Cooling off period</b>	10 business days
<b>Eligibility criteria</b>	This product and document is only applicable to Victorian customers in the United Energy distribution area. Other eligibility criteria may apply, contact Powershop for details.
<b>Prices are not fixed</b>	We may update your tariff from time to time to reflect market changes and economic conditions. We'll always notify you of any tariff change - this will usually be by email, and by no later than the date of your next bill to be impacted by the variation.
<b>Contract expiry details</b>	This Powershop offer has no contract term or exit fees
<b>Full terms and conditions</b>	We do not issue paper bills and require a credit card or bank details. For more information in relation to Powershop and this offer, see full terms and conditions at: <a href="http://www.powershop.com.au/prices">www.powershop.com.au/prices</a>

### Fees

	(incl. GST)
<b>Early termination fee</b>	<b>Flat rate: \$0.00</b>
This Powershop offer has no exit fees	
<b>Credit card payment processing fee</b>	<b>Flat rate: \$0.00</b>

Powershop do not charge credit card fees.

**Disconnection fee** **Flat rate: \$54.52**

Disconnection fees may apply to manually de-energise a property. The fee will be passed on from your distributor and may vary.

**Disconnection fee** **Flat rate: \$12.28**

Disconnection fees may apply to remotely de-energise a property. The fee will be passed on from your distributor and may vary.

#### Additional information

In addition to the applicable prices, you may incur other fees, including disconnection fees. Information regarding fees is set out on our fees page [powershop.com.au/fees](https://powershop.com.au/fees).

## Billing details

**Bill frequency** 1 month  
**Payment options** Direct debit

## Offer rate and details

### Local time

**Season 1 electricity charges - Non-Summer (01-Jul - 31-Oct)** **Tariff (incl. GST)**

**Daily supply charge** 114.97 c/day

**Peak consumption** – Mon - Fri, 7am - 7pm

All consumption 31.68c/kWh

**Off-peak consumption** – Mon - Fri, 12am - 7am; Mon - Fri, 7pm - 12am; Sat - Sun, all day

All consumption 22.92c/kWh

**Season 2 electricity charges - Summer (01-Nov - 31-Mar)** **Tariff (incl. GST)**

**Daily supply charge** 114.97 c/day

**Peak consumption** – Mon - Fri, 7am - 7pm

All consumption 31.68c/kWh

**Off-peak consumption** – Mon - Fri, 12am - 7am; Mon - Fri, 7pm - 12am; Sat - Sun, all day

All consumption 22.92c/kWh

**Demand charge** – Mon - Fri, 3pm - 6pm 73.30 cents per kW per Day

Summer Demand Incentive Charge

Demand calculation is based on the maximum measured interval consumption occurring between 3pm - 6pm Mon - Fri.

Applies per Month on the maximum kW demand for all usage.

**Season 3 electricity charges - Non-Summer (01-Apr - 30-Jun)** **Tariff (incl. GST)**

**Daily supply charge** 114.97 c/day

**Peak consumption** – Mon - Fri, 7am - 7pm

All consumption 31.68c/kWh

**Off-peak consumption** – Mon - Fri, 12am - 7am; Mon - Fri, 7pm - 12am; Sat - Sun, all day

All consumption 22.92c/kWh

**Daily supply charge:** a charge that applies for supplying electricity to your premises for each day of the billing period, regardless of how much electricity is used.

**kWh:** a 'kWh' stands for kilowatt hour and is the unit of measurement for your electricity bill.

## Solar feed-in tariff options

	<b>Tariff</b>
<b>Current retailer feed-in tariff</b>	12.00 c/kWh
<b>Premium feed-in tariff</b>	72.00 c/kWh

## GreenPower options

When you choose to buy a GreenPower product from an energy retailer, the retailer then invests the additional charge in the renewable energy industry. These purchases are audited by a group of government agencies.

<b>Option</b>	<b>Description</b>	<b>Price (incl. GST)</b>
<b>100% GreenPower</b>	Your GreenPower preference can be set within your online account and changed at any time. No discount apply to GreenPower charges.	5.50 cents per kWh
<b>50% GreenPower</b>	Your GreenPower preference can be set within your online account and changed at any time. No discount apply to GreenPower charges.	2.75 cents per kWh
<b>25% GreenPower</b>	Your GreenPower preference can be set within your online account and changed at any time. No discount apply to GreenPower charges.	1.38 cents per kWh
<b>10% GreenPower</b>	Your GreenPower preference can be set within your online account and changed at any time. No discount apply to GreenPower charges.	0.55 cents per kWh



## Powershop Australia Pty Ltd

- No contract term
- Time of use with controlled load

- Call 1800 462 668
- [www.powershop.com.au](http://www.powershop.com.au)

### Estimated Electricity costs

We are unable to provide an estimate for this offer.

Please contact **Powershop Australia Pty Ltd** on **1800 462 668** for pricing details.



### Features

- Direct debit payment required
- No pay on time discount
- Green Power options
- No fixed price contract
- No paper bills available

Estimated costs are based on typical usage in your postcode, with regular usage on weekday afternoons and evenings. Your household's usage may vary. Costs exclude controlled load charges, solar payments, concessions and bonuses.

A more personalised estimate can be found on the Victorian Energy Compare website at <https://compare.energy.vic.gov.au>.

Retailers must provide clear advice to help customers find the offer that best suits their circumstances.

Contact the retailer by calling **1800 462 668** and quote this Offer ID **POD135243MS**.

### Offer details

<b>Distributor</b>	United Energy
<b>Offer type</b>	Market offer
<b>Fuel type</b>	Electricity
<b>Customer type</b>	Small business
<b>Release date</b>	01-01-2020
<b>Expiry date</b>	31-12-2020

### Offer eligibility

This product and document is only applicable to Victorian customers in the United Energy distribution area. Other eligibility criteria may apply, contact Powershop for details.

### Contract details

<b>Contract term</b>	No contract term
<b>Cooling off period</b>	10 business days
<b>Eligibility criteria</b>	This product and document is only applicable to Victorian customers in the United Energy distribution area. Other eligibility criteria may apply, contact Powershop for details.
<b>Prices are not fixed</b>	We may update your tariff from time to time to reflect market changes and economic conditions. We'll always notify you of any tariff change - this will usually be by email, and by no later than the date of your next bill to be impacted by the variation.
<b>Contract expiry details</b>	This Powershop offer has no contract term or exit fees
<b>Full terms and conditions</b>	We do not issue paper bills and require a credit card or bank details. For more information in relation to Powershop and this offer, see full terms and conditions at: <a href="http://www.powershop.com.au/prices">www.powershop.com.au/prices</a>

### Fees

	(incl. GST)
<b>Early termination fee</b>	<b>Flat rate: \$0.00</b>
This Powershop offer has no exit fees	
<b>Credit card payment processing fee</b>	<b>Flat rate: \$0.00</b>

Powershop do not charge credit card fees.

**Disconnection fee** **Flat rate: \$54.52**

Disconnection fees may apply to manually de-energise a property. The fee will be passed on from your distributor and may vary.

**Disconnection fee** **Flat rate: \$12.28**

Disconnection fees may apply to remotely de-energise a property. The fee will be passed on from your distributor and may vary.

#### Additional information

In addition to the applicable prices, you may incur other fees, including disconnection fees. Information regarding fees is set out on our fees page [powershop.com.au/fees](https://powershop.com.au/fees).

## Billing details

**Bill frequency** 1 month  
**Payment options** Direct debit

## Offer rate and details

Local time

**Electricity charges (All year)** **Tariff (incl. GST)**

**Daily supply charge** 155.50 c/day

**Peak consumption** – Mon - Fri, 7am - 11pm

All consumption 33.55c/kWh

**Off-peak consumption** – Mon - Fri, 11pm - 12am; Mon - Fri, 12am - 7am; Sat - Sun, all day

All consumption 22.20c/kWh

**Controlled load charges** **Tariff (incl. GST)**

**Controlled load consumption** 19.47 c/kWh

**Daily supply charge:** a charge that applies for supplying electricity to your premises for each day of the billing period, regardless of how much electricity is used.

**kWh:** a 'kWh' stands for kilowatt hour and is the unit of measurement for your electricity bill.

## Solar feed-in tariff options

	<b>Tariff</b>
<b>Current retailer feed-in tariff</b>	12.00 c/kWh
<b>Premium feed-in tariff</b>	72.00 c/kWh

## GreenPower options

When you choose to buy a GreenPower product from an energy retailer, the retailer then invests the additional charge in the renewable energy industry. These purchases are audited by a group of government agencies.

<b>Option</b>	<b>Description</b>	<b>Price (incl. GST)</b>
<b>100% GreenPower</b>	Your GreenPower preference can be set within your online account and changed at any time. No discount apply to GreenPower charges.	5.50 cents per kWh
<b>50% GreenPower</b>	Your GreenPower preference can be set within your online account and changed at any time. No discount apply to GreenPower charges.	2.75 cents per kWh
<b>25% GreenPower</b>	Your GreenPower preference can be set within your online account and changed at any time. No discount apply to GreenPower charges.	1.38 cents per kWh



Option	Description	Price (incl. GST)
<b>10% GreenPower</b>	Your GreenPower preference can be set within your online account and changed at any time. No discount apply to GreenPower charges.	0.55 cents per kWh



### Powershop Australia Pty Ltd

- No contract term
- Time of use with controlled load

- Call 1800 462 668
- [www.powershop.com.au](http://www.powershop.com.au)

#### Estimated Electricity costs

We are unable to provide an estimate for this offer.

Please contact **Powershop Australia Pty Ltd** on **1800 462 668** for pricing details.



#### Features

- Direct debit payment required
- No pay on time discount
- Green Power options
- No fixed price contract
- No paper bills available

Estimated costs are based on typical usage in your postcode, with regular usage on weekday afternoons and evenings. Your household's usage may vary. Costs exclude controlled load charges, solar payments, concessions and bonuses.

A more personalised estimate can be found on the Victorian Energy Compare website at <https://compare.energy.vic.gov.au>.

Retailers must provide clear advice to help customers find the offer that best suits their circumstances.

Contact the retailer by calling **1800 462 668** and quote this Offer ID **POD135244MS**.

#### Offer details

<b>Distributor</b>	United Energy
<b>Offer type</b>	Market offer
<b>Fuel type</b>	Electricity
<b>Customer type</b>	Small business
<b>Release date</b>	01-01-2020
<b>Expiry date</b>	31-12-2020

#### Offer eligibility

This product and document is only applicable to Victorian customers in the United Energy distribution area. Other eligibility criteria may apply, contact Powershop for details.

#### Contract details

<b>Contract term</b>	No contract term
<b>Cooling off period</b>	10 business days
<b>Eligibility criteria</b>	This product and document is only applicable to Victorian customers in the United Energy distribution area. Other eligibility criteria may apply, contact Powershop for details.
<b>Prices are not fixed</b>	We may update your tariff from time to time to reflect market changes and economic conditions. We'll always notify you of any tariff change - this will usually be by email, and by no later than the date of your next bill to be impacted by the variation.
<b>Contract expiry details</b>	This Powershop offer has no contract term or exit fees
<b>Full terms and conditions</b>	We do not issue paper bills and require a credit card or bank details. For more information in relation to Powershop and this offer, see full terms and conditions at: <a href="http://www.powershop.com.au/prices">www.powershop.com.au/prices</a>

#### Fees

<b>Early termination fee</b>	(incl. GST) Flat rate: \$0.00
This Powershop offer has no exit fees	
<b>Credit card payment processing fee</b>	Flat rate: \$0.00

Powershop do not charge credit card fees.

---

**Disconnection fee****Flat rate: \$54.52**

Disconnection fees may apply to manually de-energise a property. The fee will be passed on from your distributor and may vary.

---

**Disconnection fee****Flat rate: \$12.28**

Disconnection fees may apply to remotely de-energise a property. The fee will be passed on from your distributor and may vary.

---

**Additional information**

In addition to the applicable prices, you may incur other fees, including disconnection fees. Information regarding fees is set out on our fees page [powershop.com.au/fees](https://powershop.com.au/fees).

---

---

**Billing details**

<b>Bill frequency</b>	1 month
<b>Payment options</b>	Direct debit

---

**Offer rate and details****Local time****Electricity charges (All year)****Tariff (incl. GST)**

---

<b>Daily supply charge</b>	155.99 c/day
----------------------------	--------------

**Peak consumption** – Everyday, 7am - 11pm

All consumption	33.34c/kWh
-----------------	------------

**Off-peak consumption** – Everyday, 11pm - 12am; Everyday, 12am - 7am

All consumption	21.92c/kWh
-----------------	------------

**Controlled load charges****Tariff (incl. GST)**

---

<b>Controlled load consumption</b>	19.47 c/kWh
------------------------------------	-------------

**Daily supply charge:** a charge that applies for supplying electricity to your premises for each day of the billing period, regardless of how much electricity is used.

**kWh:** a 'kWh' stands for kilowatt hour and is the unit of measurement for your electricity bill.

---

**Solar feed-in tariff options**

	<b>Tariff</b>
<b>Current retailer feed-in tariff</b>	12.00 c/kWh
<b>Premium feed-in tariff</b>	72.00 c/kWh

---

**GreenPower options**

When you choose to buy a GreenPower product from an energy retailer, the retailer then invests the additional charge in the renewable energy industry. These purchases are audited by a group of government agencies.

<b>Option</b>	<b>Description</b>	<b>Price (incl. GST)</b>
<b>100% GreenPower</b>	Your GreenPower preference can be set within your online account and changed at any time. No discount apply to GreenPower charges.	5.50 cents per kWh
<b>50% GreenPower</b>	Your GreenPower preference can be set within your online account and changed at any time. No discount apply to GreenPower charges.	2.75 cents per kWh
<b>25% GreenPower</b>	Your GreenPower preference can be set within your online account and changed at any time. No discount apply to GreenPower charges.	1.38 cents per kWh

Option	Description	Price (incl. GST)
<b>10% GreenPower</b>	Your GreenPower preference can be set within your online account and changed at any time. No discount apply to GreenPower charges.	0.55 cents per kWh



### Powershop Australia Pty Ltd

- No contract term
- Time of use with controlled load

- Call 1800 462 668
- [www.powershop.com.au](http://www.powershop.com.au)

#### Estimated Electricity costs

We are unable to provide an estimate for this offer.

Please contact **Powershop Australia Pty Ltd** on **1800 462 668** for pricing details.



#### Features

- Direct debit payment required
- No pay on time discount
- Green Power options
- No fixed price contract
- No paper bills available

Estimated costs are based on typical usage in your postcode, with regular usage on weekday afternoons and evenings. Your household's usage may vary. Costs exclude controlled load charges, solar payments, concessions and bonuses.

A more personalised estimate can be found on the Victorian Energy Compare website at <https://compare.energy.vic.gov.au>.

Retailers must provide clear advice to help customers find the offer that best suits their circumstances.

Contact the retailer by calling **1800 462 668** and quote this Offer ID **POD135245MS**.

#### Offer details

<b>Distributor</b>	United Energy
<b>Offer type</b>	Market offer
<b>Fuel type</b>	Electricity
<b>Customer type</b>	Small business
<b>Release date</b>	01-01-2020
<b>Expiry date</b>	31-12-2020

#### Offer eligibility

This product and document is only applicable to Victorian customers in the United Energy distribution area. Other eligibility criteria may apply, contact Powershop for details.

#### Contract details

<b>Contract term</b>	No contract term
<b>Cooling off period</b>	10 business days
<b>Eligibility criteria</b>	This product and document is only applicable to Victorian customers in the United Energy distribution area. Other eligibility criteria may apply, contact Powershop for details.
<b>Prices are not fixed</b>	We may update your tariff from time to time to reflect market changes and economic conditions. We'll always notify you of any tariff change - this will usually be by email, and by no later than the date of your next bill to be impacted by the variation.
<b>Contract expiry details</b>	This Powershop offer has no contract term or exit fees
<b>Full terms and conditions</b>	We do not issue paper bills and require a credit card or bank details. For more information in relation to Powershop and this offer, see full terms and conditions at: <a href="http://www.powershop.com.au/prices">www.powershop.com.au/prices</a>

#### Fees

<b>Early termination fee</b>	(incl. GST) Flat rate: \$0.00
This Powershop offer has no exit fees	
<b>Credit card payment processing fee</b>	Flat rate: \$0.00

Powershop do not charge credit card fees.

**Disconnection fee** **Flat rate: \$54.52**

Disconnection fees may apply to manually de-energise a property. The fee will be passed on from your distributor and may vary.

**Disconnection fee** **Flat rate: \$12.28**

Disconnection fees may apply to remotely de-energise a property. The fee will be passed on from your distributor and may vary.

#### Additional information

In addition to the applicable prices, you may incur other fees, including disconnection fees. Information regarding fees is set out on our fees page [powershop.com.au/fees](https://powershop.com.au/fees).

## Billing details

**Bill frequency** 1 month  
**Payment options** Direct debit

## Offer rate and details

### Local time

**Season 1 electricity charges - Non-Summer (01-Jul - 31-Oct)** **Tariff (incl. GST)**

**Daily supply charge** 114.97 c/day

**Peak consumption** – Mon - Fri, 7am - 11pm

All consumption 31.68c/kWh

**Off-peak consumption** – Mon - Fri, 12am - 7am; Mon - Fri, 11pm - 12am; Sat - Sun, all day

All consumption 22.92c/kWh

**Season 2 electricity charges - Summer (01-Nov - 31-Mar)** **Tariff (incl. GST)**

**Daily supply charge** 114.97 c/day

**Peak consumption** – Mon - Fri, 7am - 11pm

All consumption 31.68c/kWh

**Off-peak consumption** – Mon - Fri, 12am - 7am; Mon - Fri, 11pm - 12am; Sat - Sun, all day

All consumption 22.92c/kWh

**Demand charge** – Mon - Fri, 2pm - 7pm 61.35 cents per kW per Day

Summer Demand Incentive Charge

Demand calculation is based on the maximum measured interval consumption occurring between 2pm - 7pm Mon - Fri.

Applies per Month on the maximum kW demand for all usage.

**Season 3 electricity charges - Non-Summer (01-Apr - 30-Jun)** **Tariff (incl. GST)**

**Daily supply charge** 114.97 c/day

**Peak consumption** – Mon - Fri, 7am - 11pm

All consumption 31.68c/kWh

**Off-peak consumption** – Mon - Fri, 12am - 7am; Mon - Fri, 11pm - 12am; Sat - Sun, all day

All consumption 22.92c/kWh

**Controlled load charges** **Tariff (incl. GST)**

**Controlled load consumption** 19.47 c/kWh

**Daily supply charge:** a charge that applies for supplying electricity to your premises for each day of the billing period, regardless of how much electricity is used.

**kWh:** a 'kWh' stands for kilowatt hour and is the unit of measurement for your electricity bill.

## Solar feed-in tariff options

	<b>Tariff</b>
<b>Current retailer feed-in tariff</b>	12.00 c/kWh
<b>Premium feed-in tariff</b>	72.00 c/kWh

## GreenPower options

When you choose to buy a GreenPower product from an energy retailer, the retailer then invests the additional charge in the renewable energy industry. These purchases are audited by a group of government agencies.

<b>Option</b>	<b>Description</b>	<b>Price (incl. GST)</b>
<b>100% GreenPower</b>	Your GreenPower preference can be set within your online account and changed at any time. No discount apply to GreenPower charges.	5.50 cents per kWh
<b>50% GreenPower</b>	Your GreenPower preference can be set within your online account and changed at any time. No discount apply to GreenPower charges.	2.75 cents per kWh
<b>25% GreenPower</b>	Your GreenPower preference can be set within your online account and changed at any time. No discount apply to GreenPower charges.	1.38 cents per kWh
<b>10% GreenPower</b>	Your GreenPower preference can be set within your online account and changed at any time. No discount apply to GreenPower charges.	0.55 cents per kWh



## Powershop Australia Pty Ltd

- No contract term
- Time of use with controlled load

- Call 1800 462 668
- [www.powershop.com.au](http://www.powershop.com.au)

### Estimated Electricity costs

We are unable to provide an estimate for this offer.

Please contact **Powershop Australia Pty Ltd** on **1800 462 668** for pricing details.



### Features

- Direct debit payment required
- No pay on time discount
- Green Power options
- No fixed price contract
- No paper bills available

Estimated costs are based on typical usage in your postcode, with regular usage on weekday afternoons and evenings. Your household's usage may vary. Costs exclude controlled load charges, solar payments, concessions and bonuses.

A more personalised estimate can be found on the Victorian Energy Compare website at <https://compare.energy.vic.gov.au>.

Retailers must provide clear advice to help customers find the offer that best suits their circumstances.

Contact the retailer by calling **1800 462 668** and quote this Offer ID **POD135246MS**.

### Offer details

<b>Distributor</b>	United Energy
<b>Offer type</b>	Market offer
<b>Fuel type</b>	Electricity
<b>Customer type</b>	Small business
<b>Release date</b>	01-01-2020
<b>Expiry date</b>	31-12-2020

### Offer eligibility

This product and document is only applicable to Victorian customers in the United Energy distribution area. Other eligibility criteria may apply, contact Powershop for details.

### Contract details

<b>Contract term</b>	No contract term
<b>Cooling off period</b>	10 business days
<b>Eligibility criteria</b>	This product and document is only applicable to Victorian customers in the United Energy distribution area. Other eligibility criteria may apply, contact Powershop for details.
<b>Prices are not fixed</b>	We may update your tariff from time to time to reflect market changes and economic conditions. We'll always notify you of any tariff change - this will usually be by email, and by no later than the date of your next bill to be impacted by the variation.
<b>Contract expiry details</b>	This Powershop offer has no contract term or exit fees
<b>Full terms and conditions</b>	We do not issue paper bills and require a credit card or bank details. For more information in relation to Powershop and this offer, see full terms and conditions at: <a href="http://www.powershop.com.au/prices">www.powershop.com.au/prices</a>

### Fees

<b>Early termination fee</b>	(incl. GST) Flat rate: \$0.00
This Powershop offer has no exit fees	
<b>Credit card payment processing fee</b>	Flat rate: \$0.00



Powershop do not charge credit card fees.

**Disconnection fee** **Flat rate: \$54.52**

Disconnection fees may apply to manually de-energise a property. The fee will be passed on from your distributor and may vary.

**Disconnection fee** **Flat rate: \$12.28**

Disconnection fees may apply to remotely de-energise a property. The fee will be passed on from your distributor and may vary.

#### Additional information

In addition to the applicable prices, you may incur other fees, including disconnection fees. Information regarding fees is set out on our fees page [powershop.com.au/fees](https://powershop.com.au/fees).

## Billing details

**Bill frequency** 1 month  
**Payment options** Direct debit

## Offer rate and details

### Local time

**Season 1 electricity charges - Non-Summer (01-Jul - 31-Oct)** **Tariff (incl. GST)**

**Daily supply charge** 114.97 c/day

**Peak consumption** – Mon - Fri, 7am - 7pm

All consumption 31.68c/kWh

**Off-peak consumption** – Mon - Fri, 12am - 7am; Mon - Fri, 7pm - 12am; Sat - Sun, all day

All consumption 22.92c/kWh

**Season 2 electricity charges - Summer (01-Nov - 31-Mar)** **Tariff (incl. GST)**

**Daily supply charge** 114.97 c/day

**Peak consumption** – Mon - Fri, 7am - 7pm

All consumption 31.68c/kWh

**Off-peak consumption** – Mon - Fri, 12am - 7am; Mon - Fri, 7pm - 12am; Sat - Sun, all day

All consumption 22.92c/kWh

**Demand charge** – Mon - Fri, 3pm - 6pm 73.30 cents per kW per Day

Summer Demand Incentive Charge

Demand calculation is based on the maximum measured interval consumption occurring between 3pm - 6pm Mon - Fri.

Applies per Month on the maximum kW demand for all usage.

**Season 3 electricity charges - Non-Summer (01-Apr - 30-Jun)** **Tariff (incl. GST)**

**Daily supply charge** 114.97 c/day

**Peak consumption** – Mon - Fri, 7am - 7pm

All consumption 31.68c/kWh

**Off-peak consumption** – Mon - Fri, 12am - 7am; Mon - Fri, 7pm - 12am; Sat - Sun, all day

All consumption 22.92c/kWh

**Controlled load charges** **Tariff (incl. GST)**

**Controlled load consumption** 19.47 c/kWh

**Daily supply charge:** a charge that applies for supplying electricity to your premises for each day of the billing period, regardless of how much electricity is used.

**kWh:** a 'kWh' stands for kilowatt hour and is the unit of measurement for your electricity bill.

## Solar feed-in tariff options

	<b>Tariff</b>
<b>Current retailer feed-in tariff</b>	12.00 c/kWh
<b>Premium feed-in tariff</b>	72.00 c/kWh

## GreenPower options

When you choose to buy a GreenPower product from an energy retailer, the retailer then invests the additional charge in the renewable energy industry. These purchases are audited by a group of government agencies.

<b>Option</b>	<b>Description</b>	<b>Price (incl. GST)</b>
<b>100% GreenPower</b>	Your GreenPower preference can be set within your online account and changed at any time. No discount apply to GreenPower charges.	5.50 cents per kWh
<b>50% GreenPower</b>	Your GreenPower preference can be set within your online account and changed at any time. No discount apply to GreenPower charges.	2.75 cents per kWh
<b>25% GreenPower</b>	Your GreenPower preference can be set within your online account and changed at any time. No discount apply to GreenPower charges.	1.38 cents per kWh
<b>10% GreenPower</b>	Your GreenPower preference can be set within your online account and changed at any time. No discount apply to GreenPower charges.	0.55 cents per kWh